

Figure 1 Site map with existing and proposed sampling locations at SWMUs 03-014(k-o,u), 03-056(d), and AOCs 03-014(b2) and 03-014(c2) from the Phase II Investigation Work Plan for Upper Sandia Canyon Aggregate Area, Revision 1

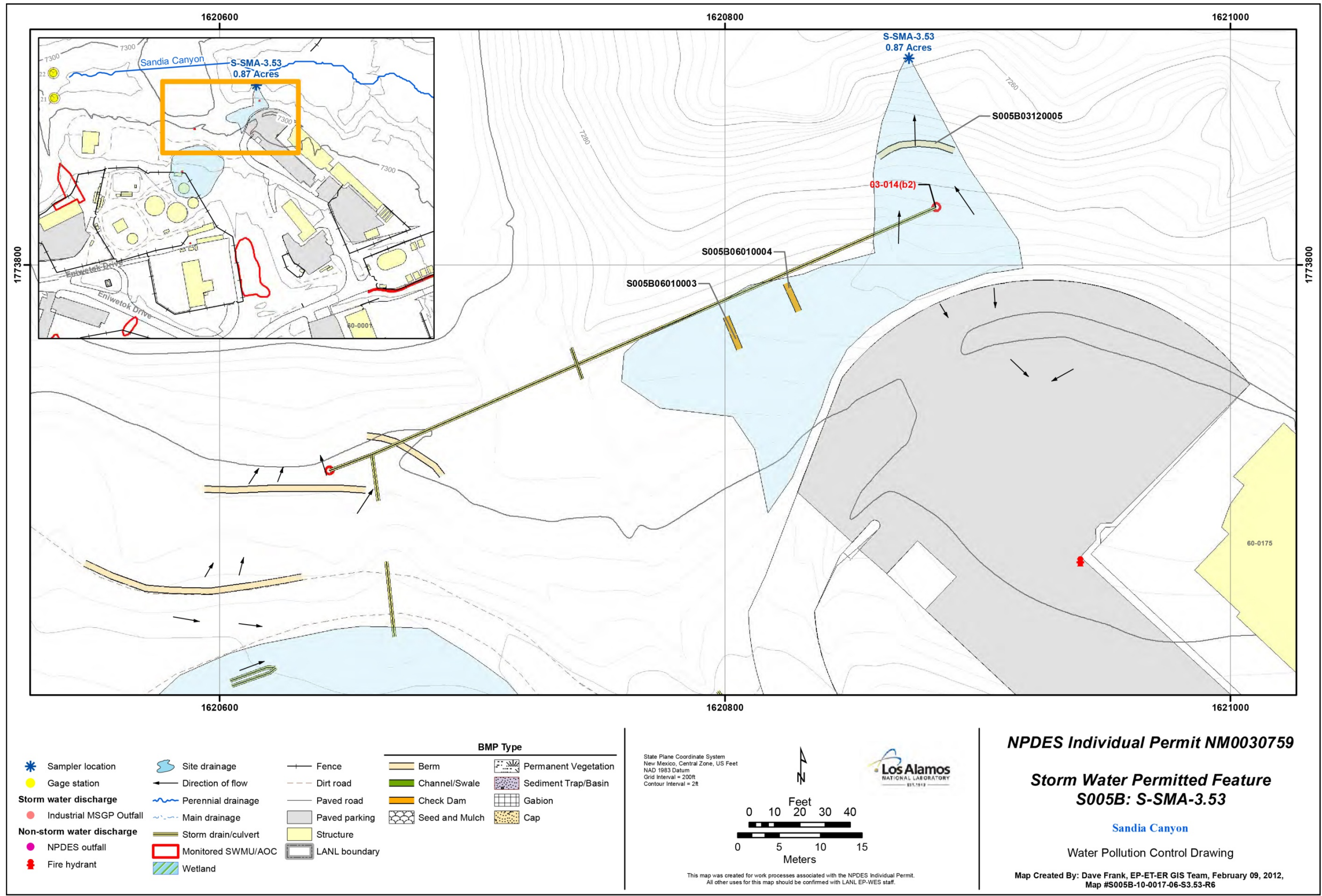


Figure 2 Project map of S-SMA-3.53 depicting AOC 03-014(b2) from the Los Alamos National Laboratory NPDES Permit No. NM0030759 Site Discharge Pollution Prevention Plan, Revision 1, Volume 2

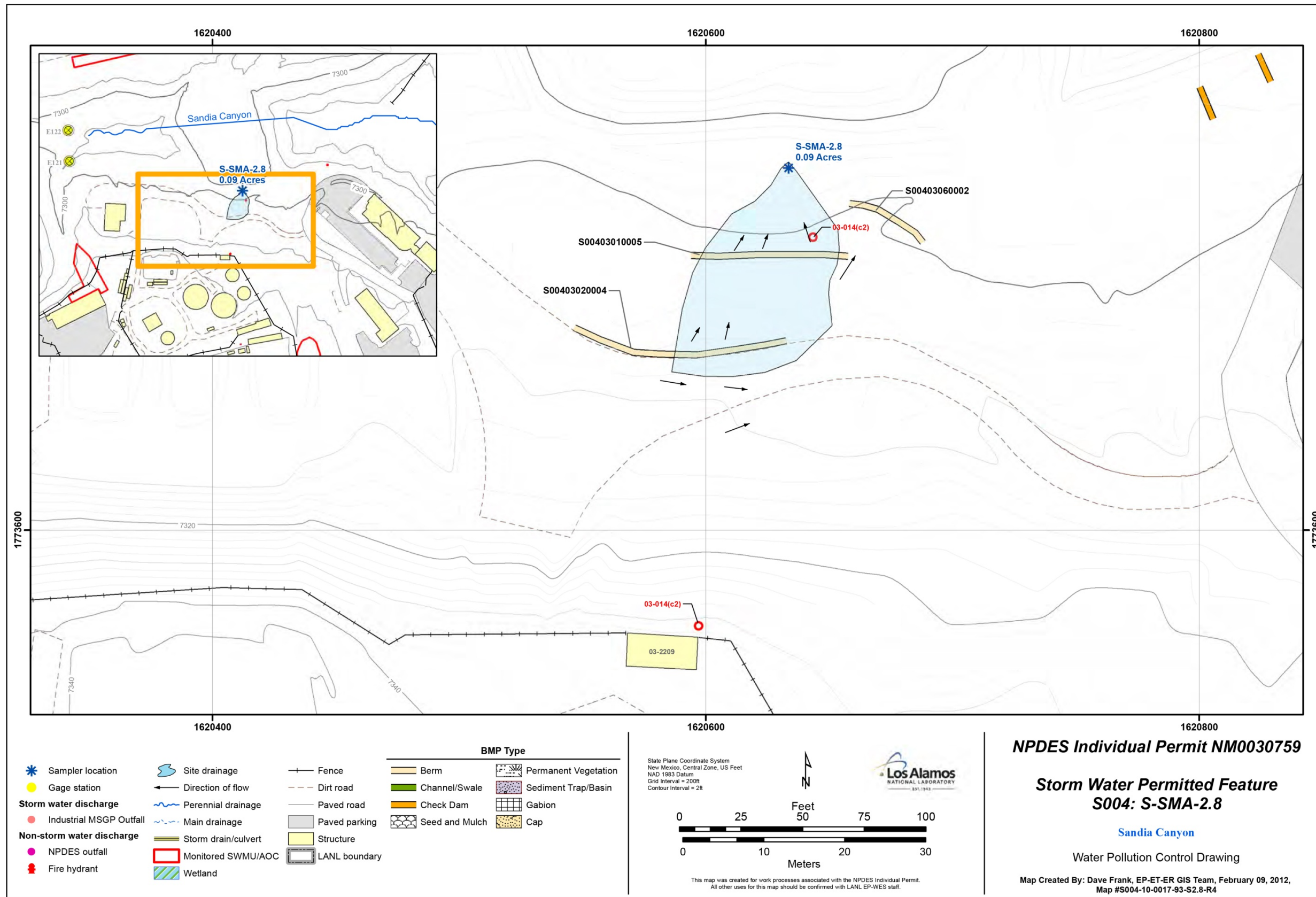


Figure 3 Project map of S-SMA-2.8 depicting AOC 03-014(c2) from the Los Alamos National Laboratory NPDES Permit No. NM0030759 Site Discharge Pollution Prevention Plan, Revision 1, Volume 2

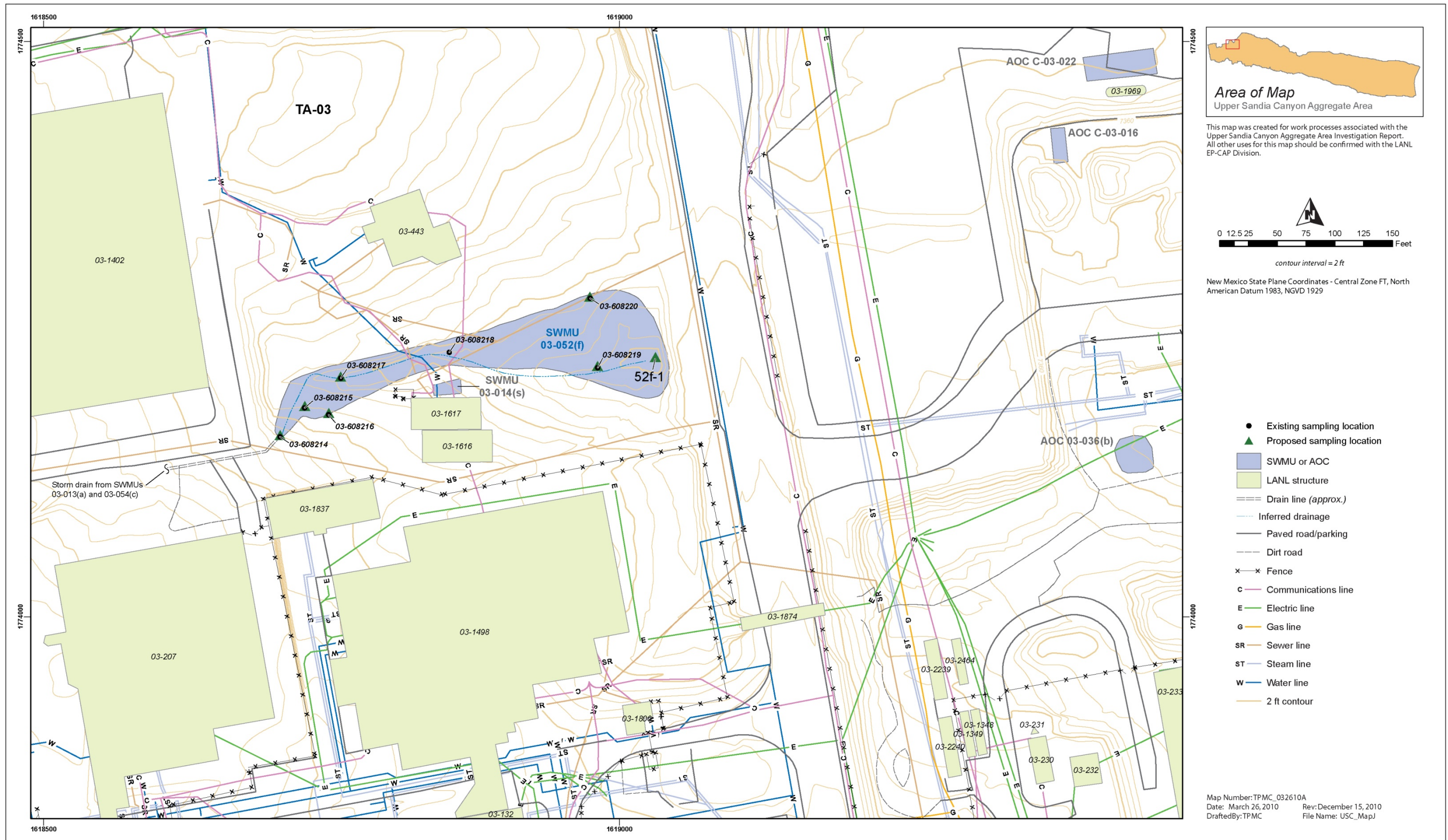


Figure 4 Site map with existing and proposed sampling locations at SWMU 03-052(f) from the Phase II Investigation Work Plan for Upper Sandia Canyon Aggregate Area, Revision 1

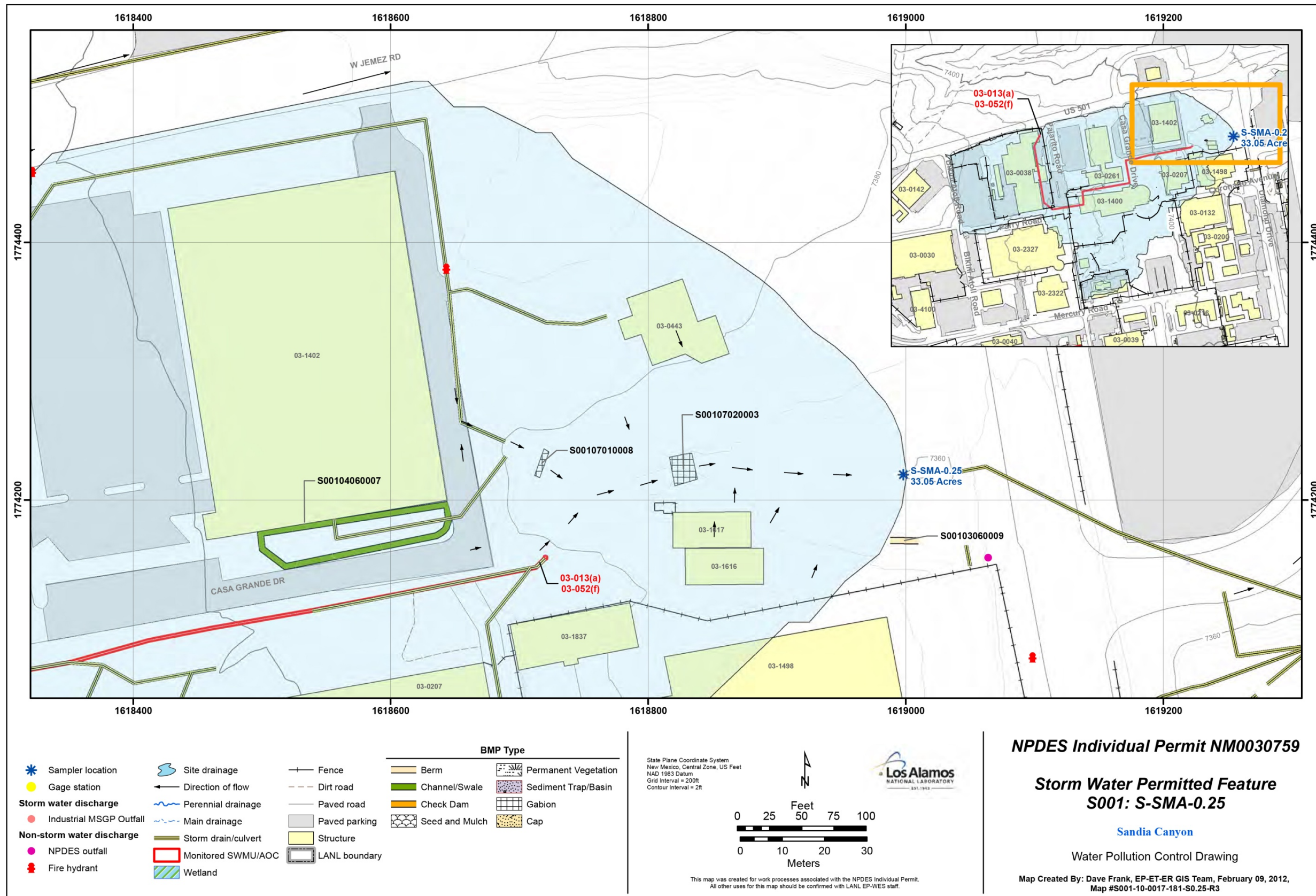


Figure 5 Project map of S-SMA-0.25 depicting SWMU 03-052(f) from the Los Alamos National Laboratory NPDES Permit No. NM0030759 Site Discharge Pollution Prevention Plan, Revision 1, Volume 2

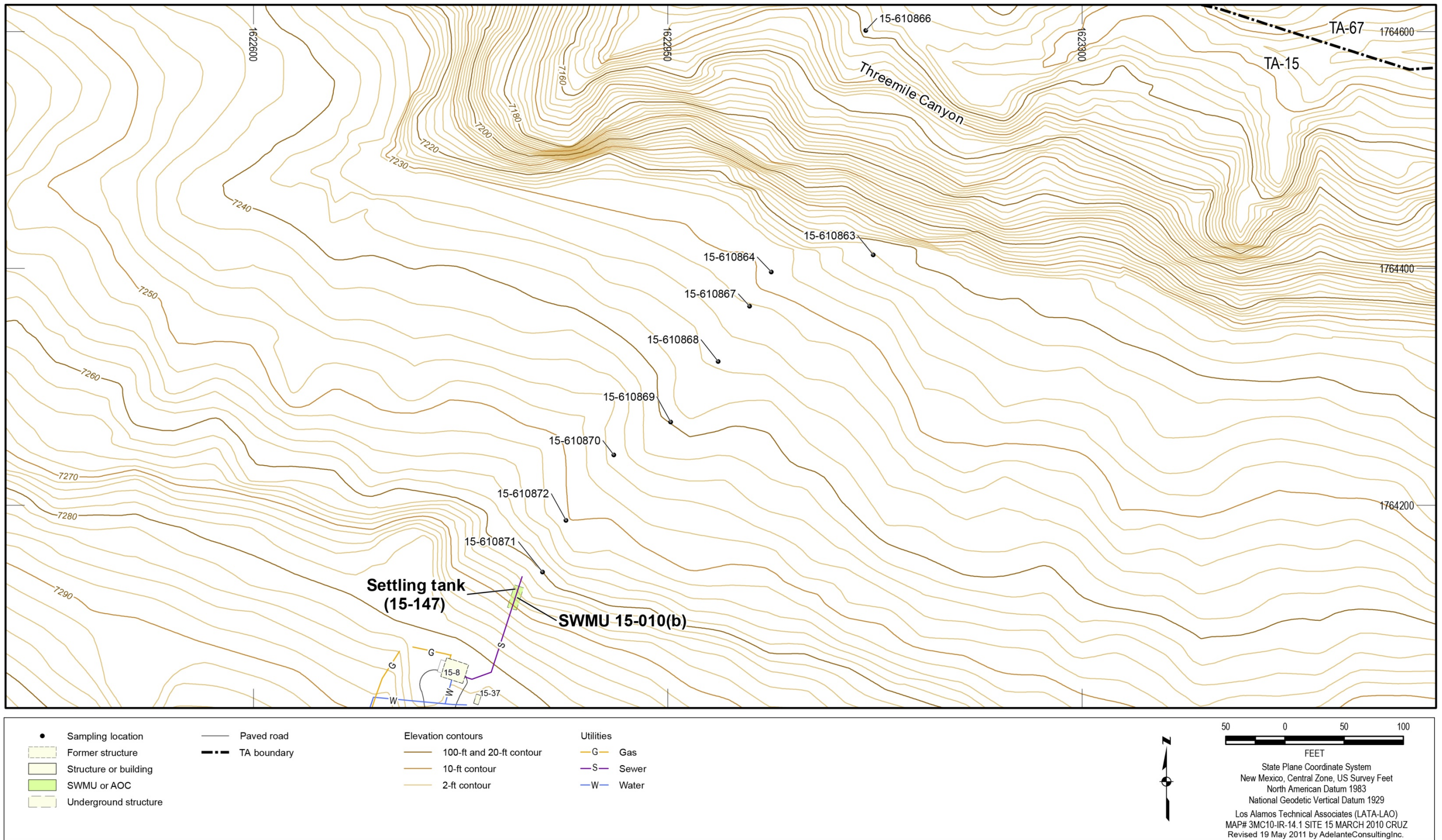


Figure 6 Site map and sampling locations at SWMU 15-010(b) from the Phase II Investigation Work Plan for Threemile Canyon Aggregate Area, Revision 1

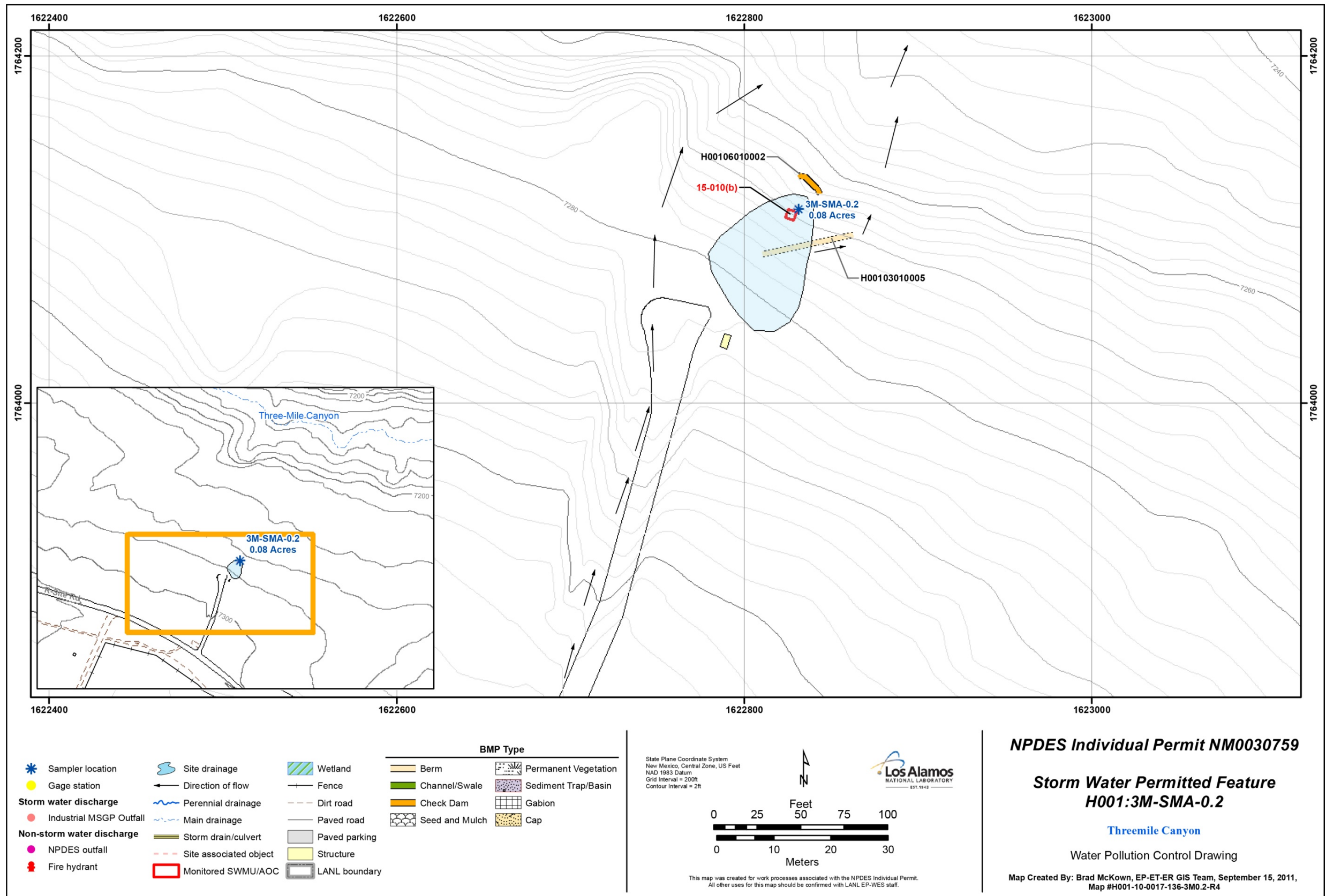


Figure 7 Project map of 3M-SMA-0.2 depicting SWMU 15-010(b) from the Los Alamos National Laboratory NPDES Permit No. NM0030759 Site Discharge Pollution Prevention Plan, Revision 1, Volume 3

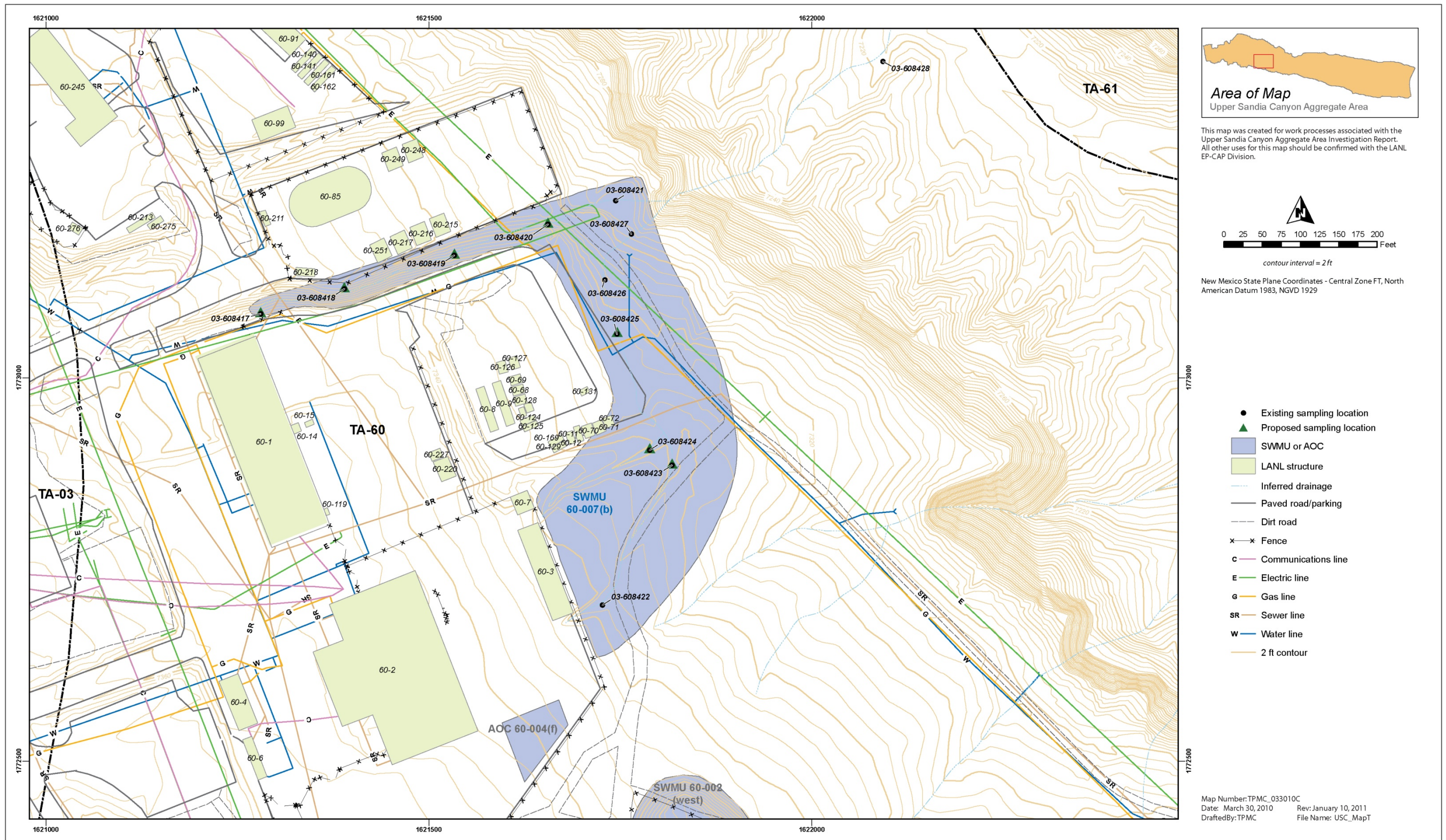


Figure 8 Site map with existing and proposed sampling locations at SWMU 60-007(b) from the Phase II Investigation Work Plan for Upper Sandia Canyon Aggregate Area, Revision 1



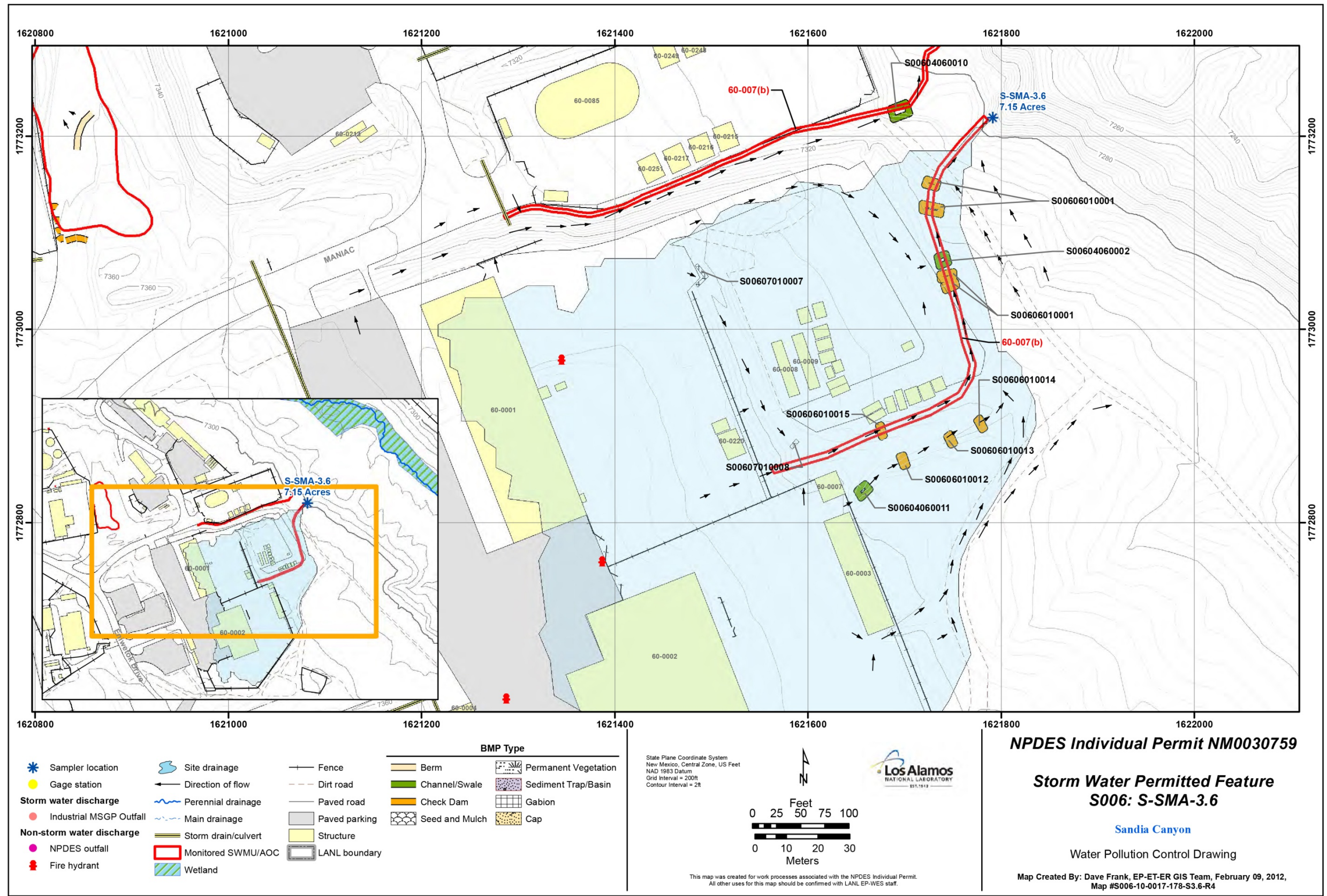


Figure 9 Project map of S-SMA-3.63 depicting SWMU 60-007(b) from the Los Alamos National Laboratory NPDES Permit No. NM0030759 Site Discharge Pollution Prevention Plan, Revision 1, Volume 2