



Associate Director for ESH
Environment, Safety, and Health
P.O. Box 1663, MS K491
Los Alamos, New Mexico 87545
505-667-4218/Fax 505-665-3811

OCT 16 '15 AM 2:26



Environmental Management
Los Alamos Field Office, MS A316
3747 West Jemez Road
Los Alamos, New Mexico 87544
(505) 665-5658/FAX (505) 606-2132

Date: OCT 16 2015

Refer To: ADESH-15-147

LAUR: on each SMA

Locates Action No.: N/A

Paulette Johnsey, Chief
Water Enforcement Branch (6EN)
Compliance Assurance and Enforcement Division
U.S. Environmental Protection Agency, Region 6
1445 Ross Avenue, Suite 1200
Dallas, Texas 75202-2733

Subject: NPDES Permit No. NM0030759 – Submittal of Certification of Installation of Enhanced Control Measures for Five Site Monitoring Areas

Dear Ms. Johnsey:

The enclosed are certification documentation for enhanced control measures completed at five site monitoring areas (SMAs). These documents are being submitted in accordance with the requirements of the National Pollutant Discharge Elimination System (NPDES) Permit No. NM0030759 for Los Alamos National Laboratory, issued to Los Alamos National Security, LLC, and the U.S. Department of Energy, effective November 1, 2010. As specified in Part I, Section E.1. (c), "Permittees shall certify completion of installation of control measures under this subsection to EPA within 30 days of completion of all such measures at the Site...."

The documentation is organized into SMA-specific reports (Table 1). Each report includes a signed certification statement, a list of the enhanced control measures installed at the SMA, a photograph of each enhanced control measure, and a site map. A copy of this report and the certified results are available from the "Regulatory Documents" link at the following website:

<http://www.lanl.gov/community-environment/environmental-stewardship/protection/compliance/individual-permit-stormwater/index.php>.

Table 1
List of SMAs in This Submittal of Certification
of Installation of Enhanced Control Measures

Site Number	SMA Number	Permitted Feature
14-001(g) 14-006	CDV-SMA-6.01	V012
48-005	M-SMA-3	M003
15-004(f) 15-008(a)	PT-SMA-1	I002
72-001	S-SMA-6	S016
35-004(a) 35-009(a) 35-016(c) 35-016(d)	T-SMA-4	T006

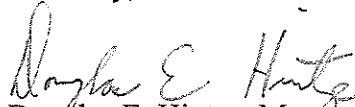
If you have any questions, please contact Terrill Lemke at (505) 665-2397 (tlemke@lanl.gov) or David Rhodes at (505) 665-5325 (david.rhodes@em.doe.gov).

Sincerely,



Alison M. Dorries, Division Leader
Environmental Protection Division
Los Alamos National Laboratory

Sincerely,



Douglas E. Hintze, Manager
Environmental Management
Los Alamos Field Office

AD/DH/BR/SV:sm

Enclosures: One hard copy with electronic files – Certification of Installation of Enhanced Control Measures for Five Site Monitoring Areas (see individual document for LA-UR number)

Cy: (w/enc.)

Bruce Yurdin, NMED-SWQB, P.O. Box 5469, Santa Fe, NM 87502 (paper & electronic copy)
emla.docs@em.doe.gov, MS A316
Public Reading Room (EPRR)
ADESH Records

Cy: (Letter and CD and/or DVD)

Laurie King, EPA Region 6, Dallas, TX
Sarah Holcomb, NMED-SWQB
Steve Yanicak, NMED-DOE-OB, MS M894
Bill Foley, ADEP ER Program
PRS Database

Cy: (w/o enc./date-stamped letter emailed)

Everett Spencer, EPA Region 6
Brent Larsen, EPA Region 6
lasomailbox@nnsa.doe.gov
Kimberly Davis Lebak, DOE-NA-LA
Peter Maggiore, DOE-NA-LA
Annette Russell, DOE-EM-LA
Karen Armijo, DOE-EM-LA
David Rhodes, DOE-EM-LA
Steve Veenis, ADEP ER Program
Bruce Robinson, ADEP ER Program
Sam Loftin, ADESH-ENV-CP
Terrill Lemke, ADESH-ENV-CP
Mike Saladen, ADESH-ENV-CP
Alison Dorries, ADESH-ENV-DO
Michael Brandt, ADESH
Amy De Palma, PADOPS
Craig Leasure, PADOPS

**Certification of Installation of
Enhanced Control Measures
at CDV-SMA-6.01**

LA-UR-15-27472

[This page intentionally blank.]

LOS ALAMOS NATIONAL LABORATORY
CERTIFICATION OF ENHANCED CONTROL MEASURES

PF:V012


CDV-SMA-6.01

Sites: 14-001(g)
14-006

The following certification was performed in accordance with NPDES Permit No.NM0030759, Part I.E.1 (c), which requires the Permittees (i.e. DOE and LANS) to certify the completion of the installation of control measures within 30 days of completion of the installation of all such measures at the site.

CERTIFICATION STATEMENT OF AUTHORIZATION


"I certify under penalty of law that this document and all attachments were prepared under my direction or supervision in accordance with a system designed to assure that qualified personnel properly gather and evaluate the information submitted. Based on my inquiry of the person or persons who manage the system, or those persons directly responsible for gathering the information, the information submitted is, to the best of my knowledge and belief, true, accurate and complete. I am aware there are significant penalties for submitting false information including the possibility of fine and imprisonment for knowing violations."



Environmental Programs
Environmental Remediation
Los Alamos National Security, LLC

09/30/2015

Date



Los Alamos Field Office
Environmental Management
U.S. Department of Energy

10-15-2015

Date

[This page intentionally blank.]

**LOS ALAMOS NATIONAL LABORATORY
CERTIFICATION OF ENHANCED CONTROL MEASURES**

PF: V012

CDV-SMA-6.01

Sites: 14-001(g)
14-006

In accordance with Part I.E.1 (a), the design, installation, and documentation of enhanced control measures reasonably expected to achieve compliance with target action levels identified in the Permit for all Sites within the identified SMA drainage area have been completed.

Enhanced Control Measure Description:			
BMP ID	Type of Control Measure	Control Measure	Photo ID
V01203010017	Berms	Earthen Berm	50327-1.JPG
V01203010018	Berms	Earthen Berm	50327-4.JPG

NPDES PERMIT NO. NM0030759

LA-UR-15-27472

LOS ALAMOS NATIONAL LABORATORY
CERTIFICATION OF ENHANCED CONTROL MEASURES

PF: V012

CDV-SMA-6.01

Sites: 14-001(g)
14-006

Photos:



Photo: 50327-1.JPG

V01203010017

Berms

- Earthen Berm

NPDES PERMIT NO. NM0030759

LA-UR-15-27472

LOS ALAMOS NATIONAL LABORATORY
CERTIFICATION OF ENHANCED CONTROL MEASURES

PF: V012

CDV-SMA-6.01

Sites: 14-001(g)
14-006



Photo: 50327-4.JPG

V01203010018

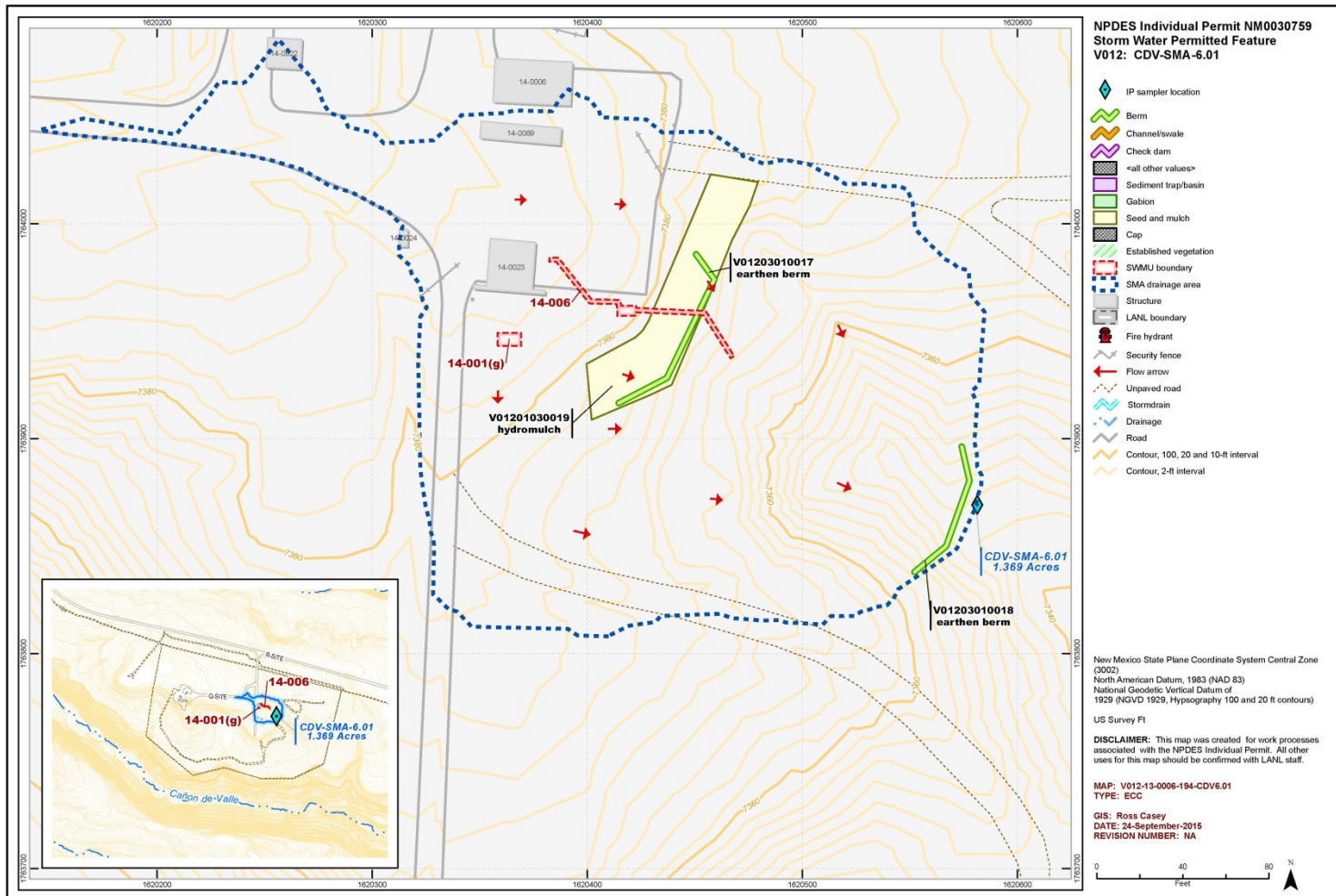
Berms

- Earthen Berm

LOS ALAMOS NATIONAL LABORATORY
CERTIFICATION OF ENHANCED CONTROL MEASURES
CDV-SMA-6.01

PF: V012

Sites: 14-001(g)
14-006



**Certification of Installation of
Enhanced Control Measures
at M-SMA-3**

LA-UR-15-27233

[This page intentionally blank.]

LOS ALAMOS NATIONAL LABORATORY
CERTIFICATION OF ENHANCED CONTROL MEASURES

PF: M003


M-SMA-3

Sites: 48-005

The following certification was performed in accordance with NPDES Permit No. NM0030759, Part I.E.1 (c), which requires the Permittees (i.e. DOE and LANS) to certify the completion of the installation of control measures within 30 days of completion of the installation of all such measures at the site.

CERTIFICATION STATEMENT OF AUTHORIZATION

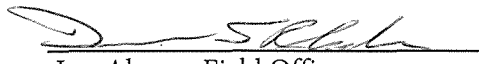
"I certify under penalty of law that this document and all attachments were prepared under my direction or supervision in accordance with a system designed to assure that qualified personnel properly gather and evaluate the information submitted. Based on my inquiry of the person or persons who manage the system, or those persons directly responsible for gathering the information, the information submitted is, to the best of my knowledge and belief, true, accurate and complete. I am aware there are significant penalties for submitting false information including the possibility of fine and imprisonment for knowing violations."



Environmental Programs
Environmental Remediation
Los Alamos National Security, LLC

09/30/2015

Date



Los Alamos Field Office
Environmental Management
U.S. Department of Energy

10-15-2015

Date

[This page intentionally blank.]

**LOS ALAMOS NATIONAL LABORATORY
CERTIFICATION OF ENHANCED CONTROL MEASURES**

PF: M003

M-SMA-3

Sites: 48-005

Sites 48-001 and 48-007(c) are not included in the report since they were included in the Alternative Compliance Request submitted to the U.S. EPA by LANL on 5/6/15. The enhanced control measure installations certified in this document apply to the remaining Site at this SMA.

In accordance with Part I.E.1 (a), the design, installation, and documentation of enhanced control measures reasonably expected to achieve compliance with target action levels identified in the Permit for all Sites within the identified SMA drainage area have been completed.

Enhanced Control Measure Description:			
BMP ID	Type of Control Measure	Control Measure	Photo ID
M00304060018	Channel/Swale	Rip Rap	49955-4.JPG
M00304080017	Channel/Swale	Turf Reinforcement Matting	49955-3.JPG
M00305020015	Sediment Traps and Basins	Sediment Basin	49955-1.jpg
M00305060016	Sediment Traps and Basins	Infiltration Basin	49955-2.JPG

LOS ALAMOS NATIONAL LABORATORY
CERTIFICATION OF ENHANCED CONTROL MEASURES

PF: M003

M-SMA-3

Sites: 48-005

Photos:



Photo: 49955-1.jpg

M00305020015

Sediment Traps and Basins

- Sediment Basin

LOS ALAMOS NATIONAL LABORATORY
CERTIFICATION OF ENHANCED CONTROL MEASURES

PF: M003

M-SMA-3

Sites: 48-005



Photo: 49955-2.JPG

M00305060016

Sediment Traps and Basins

- Infiltration Basin

LOS ALAMOS NATIONAL LABORATORY
CERTIFICATION OF ENHANCED CONTROL MEASURES

PF: M003

M-SMA-3

Sites: 48-005



Photo: 49955-3.JPG

M00304080017

Channel/Swale

- Turf Reinforcement Matting

LOS ALAMOS NATIONAL LABORATORY
CERTIFICATION OF ENHANCED CONTROL MEASURES

PF: M003

M-SMA-3

Sites: 48-005



Photo: 49955-4.JPG

M00304060018

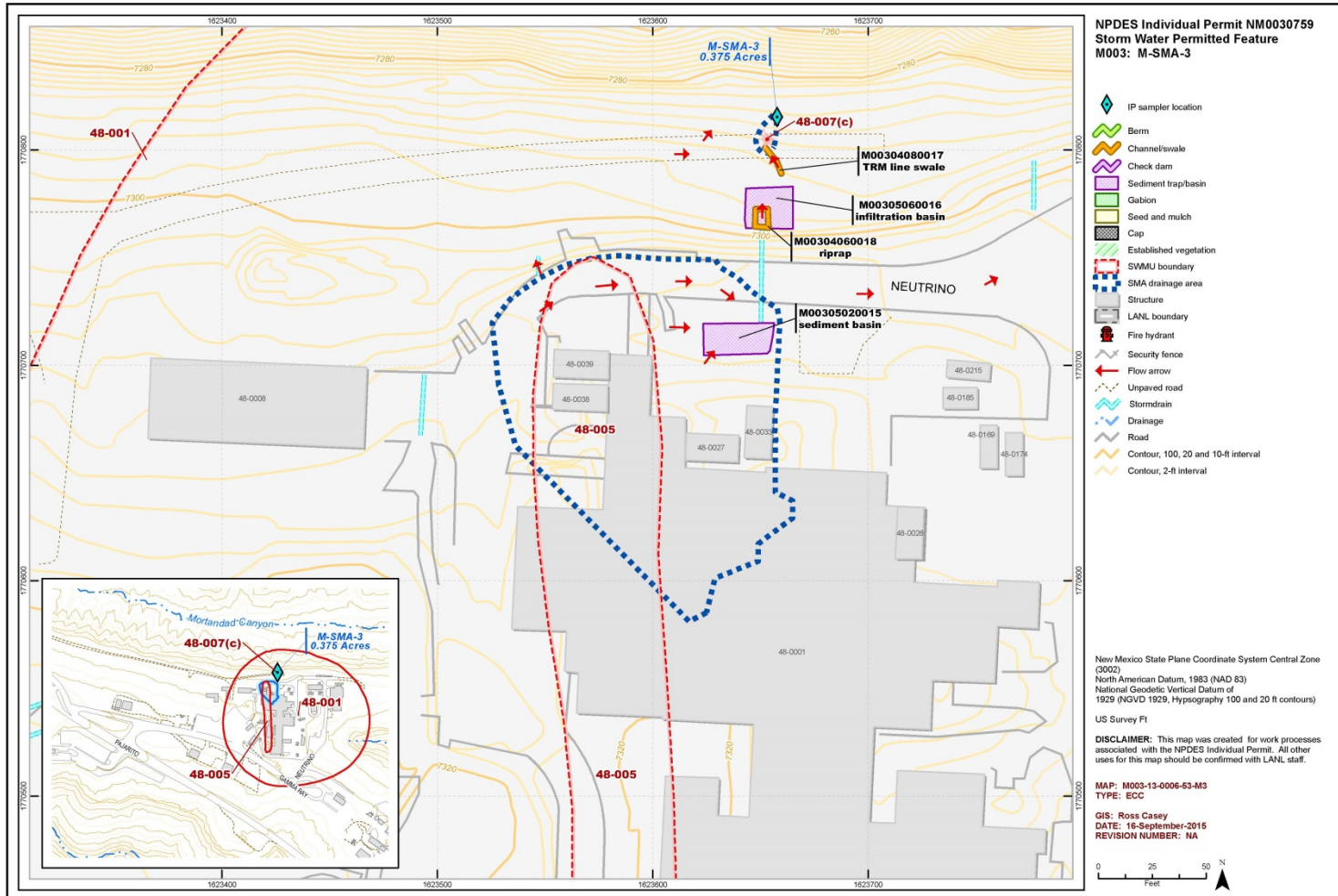
Channel/Swale

- Rip Rap

LOS ALAMOS NATIONAL LABORATORY
CERTIFICATION OF ENHANCED CONTROL MEASURES
M-SMA-3

PF: M003

Sites: 48-005



**Certification of Installation of
Enhanced Control Measures
at PT-SMA-1**

LA-UR-15-27267

[This page intentionally blank.]

LOS ALAMOS NATIONAL LABORATORY
CERTIFICATION OF ENHANCED CONTROL MEASURES

PF: I002

PT-SMA-1

Sites: 15-004(f)
15-008(a)

The following certification was performed in accordance with NPDES Permit No. NM0030759, Part I.E.1 (c), which requires the Permittees (i.e. DOE and LANS) to certify the completion of the installation of control measures within 30 days of completion of the installation of all such measures at the site.

CERTIFICATION STATEMENT OF AUTHORIZATION

"I certify under penalty of law that this document and all attachments were prepared under my direction or supervision in accordance with a system designed to assure that qualified personnel properly gather and evaluate the information submitted. Based on my inquiry of the person or persons who manage the system, or those persons directly responsible for gathering the information, the information submitted is, to the best of my knowledge and belief, true, accurate and complete. I am aware there are significant penalties for submitting false information including the possibility of fine and imprisonment for knowing violations."

Environmental Programs
Environmental Remediation
Los Alamos National Security, LLC

9/30/2015

Date

Los Alamos Field Office
Environmental Management
U.S. Department of Energy

10-15-2015

Date

[This page intentionally blank.]

**LOS ALAMOS NATIONAL LABORATORY
CERTIFICATION OF ENHANCED CONTROL MEASURES**

PF: I002

PT-SMA-1

Sites: 15-004(f)
15-008(a)

In accordance with Part I.E.1 (a), the design, installation, and documentation of enhanced control measures reasonably expected to achieve compliance with target action levels identified in the Permit for all Sites within the identified SMA drainage area have been completed.

Enhanced Control Measure Description:			
BMP ID	Type of Control Measure	Control Measure	Photo ID
I00203010039	Berms	Earthen Berm	50337-13.jpg
I00203120038	Berms	Rock Berm	50337-12.jpg
I00203140040	Berms	Coir Log	50337-14.jpg
I00203140041	Berms	Coir Log	50337-15.jpg

LOS ALAMOS NATIONAL LABORATORY
CERTIFICATION OF ENHANCED CONTROL MEASURES

PF: I002

PT-SMA-1

Sites: 15-004(f)
15-008(a)

Photos:



Photo: 50337-12.jpg
100203120038 Bems

- Rock Berm

NPDES PERMIT NO. NM0030759

LA-UR-15-27267

LOS ALAMOS NATIONAL LABORATORY
CERTIFICATION OF ENHANCED CONTROL MEASURES

PF: I002

PT-SMA-1

Sites: 15-004(f)
15-008(a)



Photo: 50337-13.jpg
I00203010039 Berms

- Earthen Berm

LOS ALAMOS NATIONAL LABORATORY
CERTIFICATION OF ENHANCED CONTROL MEASURES

PF: I002

PT-SMA-1

Sites: 15-004(f)
15-008(a)



Photo: 50337-14.jpg

- Coir Log

I00203140040 Berms

LOS ALAMOS NATIONAL LABORATORY
CERTIFICATION OF ENHANCED CONTROL MEASURES

PF: I002

PT-SMA-1

Sites: 15-004(f)
15-008(a)



- Coir Log

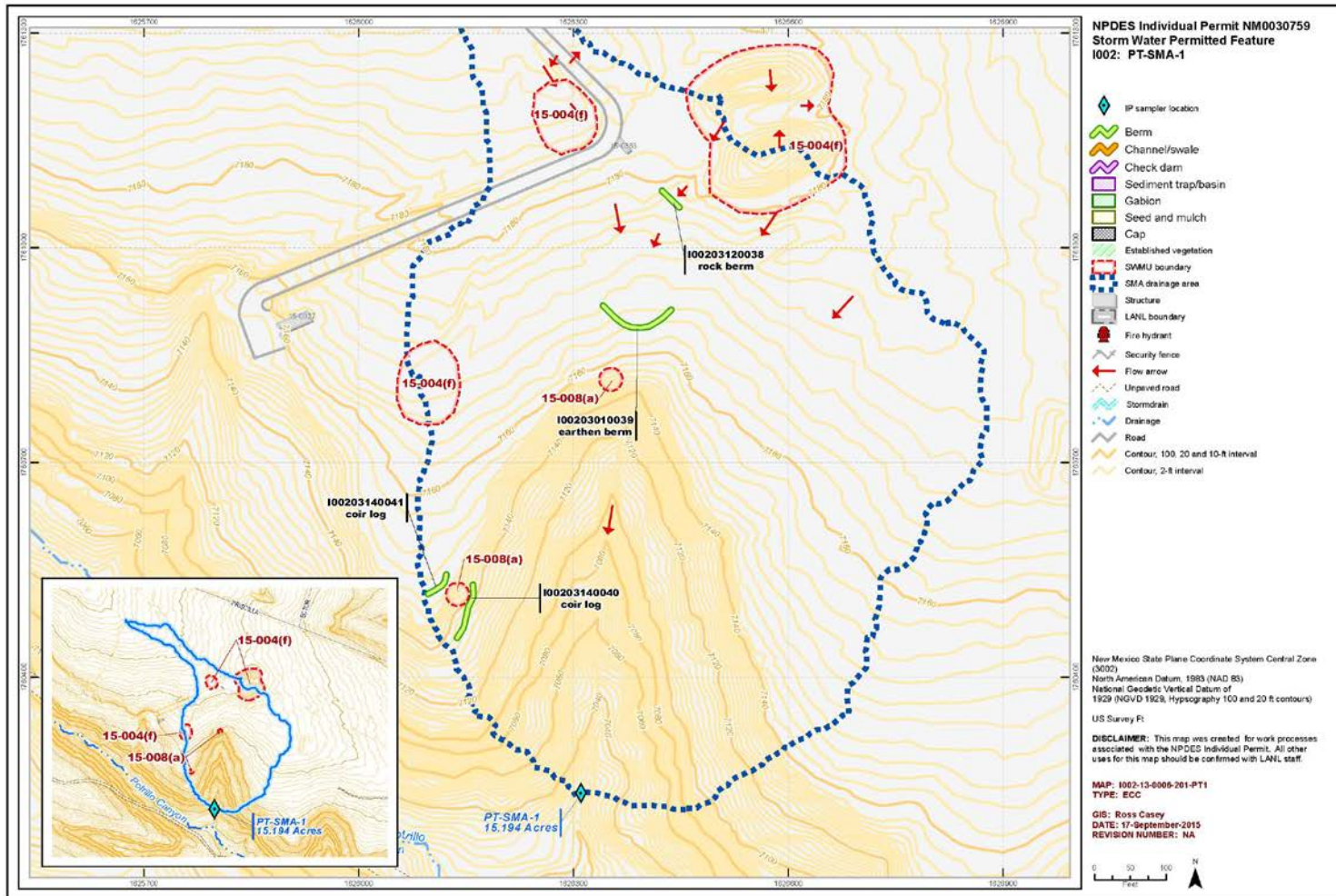
Photo: 50337-15.jpg

I00203140041 Berms

LOS ALAMOS NATIONAL LABORATORY
CERTIFICATION OF ENHANCED CONTROL MEASURES
PT-SMA-1

PF: I002

Sites: 15-004(f)
15-008(a)



**Certification of Installation of
Enhanced Control Measures
at S-SMA-6**

LA-UR-15-27151

[This page intentionally blank.]

LOS ALAMOS NATIONAL LABORATORY
CERTIFICATION OF ENHANCED CONTROL MEASURES

PF: S016

S-SMA-6

Sites: 72-001

The following certification was performed in accordance with NPDES Permit No. NM0030759, Part I.E.1 (c), which requires the Permittees (i.e. DOE and LANS) to certify the completion of the installation of control measures within 30 days of completion of the installation of all such measures at the site.

CERTIFICATION STATEMENT OF AUTHORIZATION

"I certify under penalty of law that this document and all attachments were prepared under my direction or supervision in accordance with a system designed to assure that qualified personnel properly gather and evaluate the information submitted. Based on my inquiry of the person or persons who manage the system, or those persons directly responsible for gathering the information, the information submitted is, to the best of my knowledge and belief, true, accurate and complete. I am aware there are significant penalties for submitting false information including the possibility of fine and imprisonment for knowing violations."



Environmental Programs
Environmental Remediation
Los Alamos National Security, LLC



Date



Los Alamos Field Office
Environmental Management
U.S. Department of Energy



Date

[This page intentionally blank.]

**LOS ALAMOS NATIONAL LABORATORY
CERTIFICATION OF ENHANCED CONTROL MEASURES**

PF: S016

S-SMA-6

Sites: 72-001

In accordance with Part I.E.1 (a), the design, installation, and documentation of enhanced control measures reasonably expected to achieve compliance with target action levels identified in the Permit for all Sites within the identified SMA drainage area have been completed.

Enhanced Control Measure Description:			
BMP ID	Type of Control Measure	Control Measure	Photo ID
S01604020017	Channel/Swale	Concrete/Asphalt Channel/Swale	48864-7.JPG
S01604030015	Channel/Swale	Rock Channel/Swale	48864-5.JPG
S01606040016	Check Dam	Energy Dissipater	48864-6.JPG

LOS ALAMOS NATIONAL LABORATORY
CERTIFICATION OF ENHANCED CONTROL MEASURES

PF: S016

S-SMA-6

Sites: 72-001

Photos:



Photo: 48864-5.JPG

S01604030015

Channel/Swale

- Rock Channel/Swale

LOS ALAMOS NATIONAL LABORATORY
CERTIFICATION OF ENHANCED CONTROL MEASURES

PF: S016

S-SMA-6

Sites: 72-001



Photo: 48864-6.JPG

S01606040016 Check Dam

- Energy Dissipater

NPDES PERMIT NO. NM0030759

LA-UR-15-27151

LOS ALAMOS NATIONAL LABORATORY
CERTIFICATION OF ENHANCED CONTROL MEASURES

PF: S016

S-SMA-6

Sites: 72-001



Photo: 48864-7.JPG

S01604020017

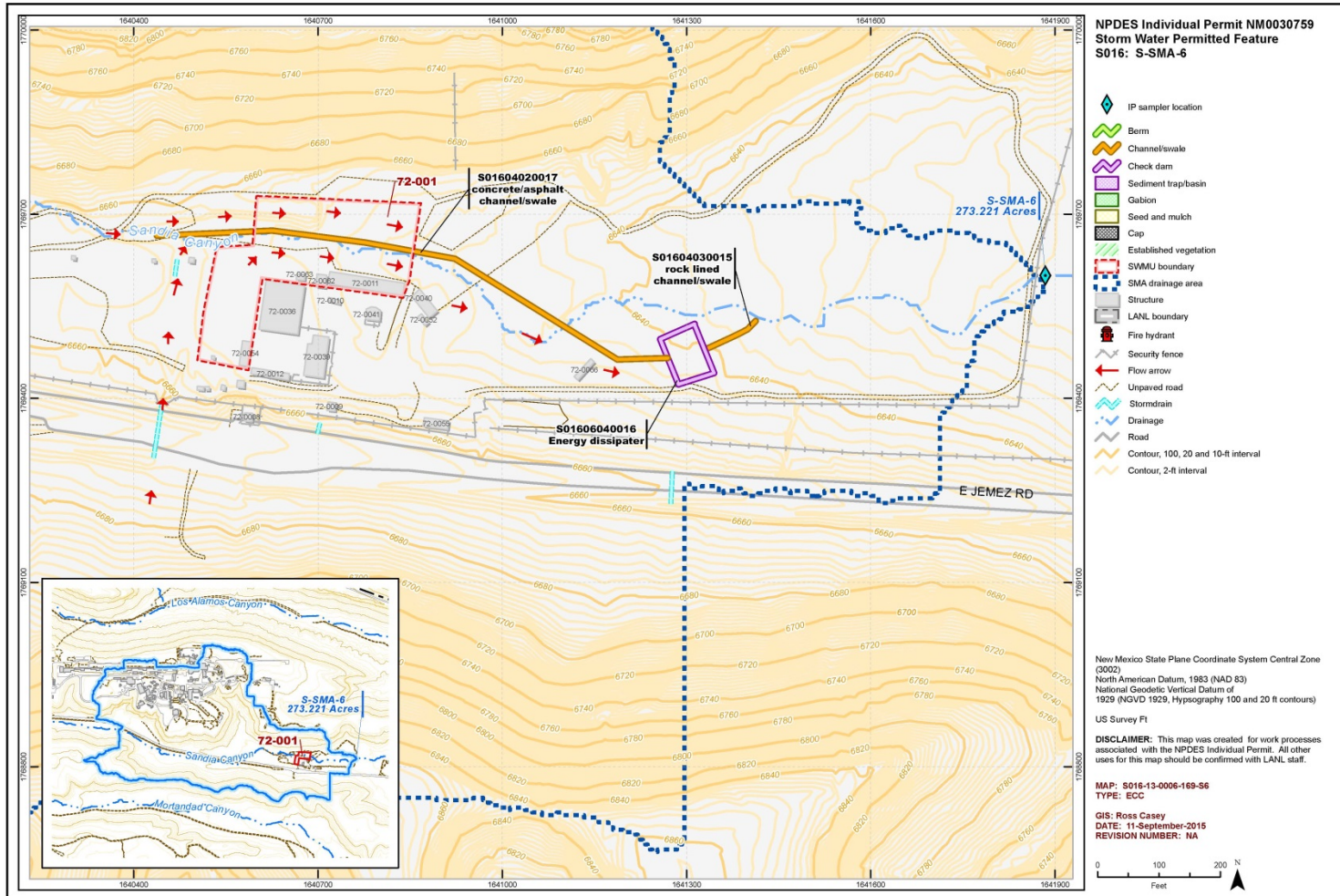
Channel/Swale

- Concrete/Asphalt Channel/Swale

LOS ALAMOS NATIONAL LABORATORY
CERTIFICATION OF ENHANCED CONTROL MEASURES
S-SMA-6

PF: S016

Sites: 72-001



**Certification of Installation of
Enhanced Control Measures
at T-SMA-4**

LA-UR-15-26898

[This page intentionally blank.]

NPDES PERMIT NO. NM0030759

LA-UR-15-26898

LOS ALAMOS NATIONAL LABORATORY
CERTIFICATION OF ENHANCED CONTROL MEASURES

PF: T006

T-SMA-4

Sites: 35-004(a)
35-009(a)
35-016(c)
35-016(d)

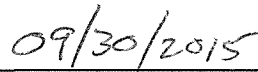
The following certification was performed in accordance with NPDES Permit No. NM0030759, Part I.E.1 (c), which requires the Permittees (i.e. DOE and LANS) to certify the completion of the installation of control measures within 30 days of completion of the installation of all such measures at the site.

CERTIFICATION STATEMENT OF AUTHORIZATION

"I certify under penalty of law that this document and all attachments were prepared under my direction or supervision in accordance with a system designed to assure that qualified personnel properly gather and evaluate the information submitted. Based on my inquiry of the person or persons who manage the system, or those persons directly responsible for gathering the information, the information submitted is, to the best of my knowledge and belief, true, accurate and complete. I am aware there are significant penalties for submitting false information including the possibility of fine and imprisonment for knowing violations."




Environmental Programs
Environmental Remediation
Los Alamos National Security, LLC



Date



Los Alamos Field Office
Environmental Management
U.S. Department of Energy



Date

[This page intentionally blank.]

**LOS ALAMOS NATIONAL LABORATORY
CERTIFICATION OF ENHANCED CONTROL MEASURES**

PF: T006

T-SMA-4

Sites: 35-004(a)
35-009(a)
35-016(c)
35-016(d)

In accordance with Part I.E.1 (a), the design, installation, and documentation of enhanced control measures reasonably expected to achieve compliance with target action levels identified in the Permit for all Sites within the identified SMA drainage area have been completed.

Enhanced Control Measure Description:			
BMP ID	Type of Control Measure	Control Measure	Photo ID
T00603010019	Berms	Earthen Berm	50118-1.jpg
T00603030020	Berms	Log Berm	50118-8.jpg
T00603030021	Berms	Log Berm	50118-9.jpg
T00603090012	Berms	Curbing	50118-5.jpg
T00603110013	Berms	Eco-Block	50118-6.jpg
T00603120015	Berms	Rock Berm	50118-2.jpg
T00603120016	Berms	Rock Berm	50118-3.jpg
T00603120017	Berms	Rock Berm	50118-3.jpg
T00603120018	Berms	Rock Berm	50118-3.jpg
T00604060014	Channel/Swale	Rip Rap	50118-4.jpg
T00604060022	Channel/Swale	Rip Rap	50118-6.jpg

NPDES PERMIT NO. NM0030759

LA-UR-15-26898

LOS ALAMOS NATIONAL LABORATORY
CERTIFICATION OF ENHANCED CONTROL MEASURES

PF: T006

T-SMA-4

Sites: 35-004(a)
35-009(a)
35-016(c)
35-016(d)

Photos:



Photo: 50118-1.jpg

T00603010019

Berms

- Earthen Berm

NPDES PERMIT NO. NM0030759

LA-UR-15-26898

LOS ALAMOS NATIONAL LABORATORY
CERTIFICATION OF ENHANCED CONTROL MEASURES

PF: T006

T-SMA-4

Sites: 35-004(a)
35-009(a)
35-016(c)
35-016(d)



Photo: 50118-2.jpg

T00603120015

Berms

- Rock Berm

NPDES PERMIT NO. NM0030759

LA-UR-15-26898

LOS ALAMOS NATIONAL LABORATORY
CERTIFICATION OF ENHANCED CONTROL MEASURES

PF: T006

T-SMA-4

Sites: 35-004(a)
35-009(a)
35-016(c)
35-016(d)



Photo: 50118-3.jpg

- | | | |
|--------------|-------|-------------|
| T00603120016 | Berms | - Rock Berm |
| T00603120017 | Berms | - Rock Berm |
| T00603120018 | Berms | - Rock Berm |

NPDES PERMIT NO. NM0030759

LA-UR-15-26898

LOS ALAMOS NATIONAL LABORATORY
CERTIFICATION OF ENHANCED CONTROL MEASURES

PF: T006

T-SMA-4

Sites: 35-004(a)
35-009(a)
35-016(c)
35-016(d)



Photo: 50118-4.jpg

T00604060014

Channel/Swale

- Rip Rap

NPDES PERMIT NO. NM0030759

LA-UR-15-26898

LOS ALAMOS NATIONAL LABORATORY
CERTIFICATION OF ENHANCED CONTROL MEASURES

PF: T006

T-SMA-4

Sites: 35-004(a)
35-009(a)
35-016(c)
35-016(d)



Photo: 50118-5.jpg

T00603090012

Berms

- Curbing

NPDES PERMIT NO. NM0030759

LA-UR-15-26898

LOS ALAMOS NATIONAL LABORATORY
CERTIFICATION OF ENHANCED CONTROL MEASURES

PF: T006

T-SMA-4

Sites: 35-004(a)
35-009(a)
35-016(c)
35-016(d)



Photo: 50118-6.jpg

T00603110013

Berms

- Eco-Block

T00604060022

Channel/Swale

- Rip Rap

NPDES PERMIT NO. NM0030759

LA-UR-15-26898

LOS ALAMOS NATIONAL LABORATORY
CERTIFICATION OF ENHANCED CONTROL MEASURES

PF: T006

T-SMA-4

Sites: 35-004(a)
35-009(a)
35-016(c)
35-016(d)



Photo: 50118-8.jpg

T00603030020

Berms

- Log Berm

NPDES PERMIT NO. NM0030759

LA-UR-15-26898

LOS ALAMOS NATIONAL LABORATORY
CERTIFICATION OF ENHANCED CONTROL MEASURES

PF: T006

T-SMA-4

Sites: 35-004(a)
35-009(a)
35-016(c)
35-016(d)



Photo: 50118-9.jpg

T00603030021 Berms

- Log Berm

LOS ALAMOS NATIONAL LABORATORY
 CERTIFICATION OF ENHANCED CONTROL MEASURES
 T-SMA-4

PF: T006

Sites: 35-004(a)
 35-009(a)
 35-016(c)
 35-016(d)

