

**LA-UR-11-00922**

*Approved for public release;  
distribution is unlimited.*

# **SM-43, Nerve Center of a National Laboratory:**

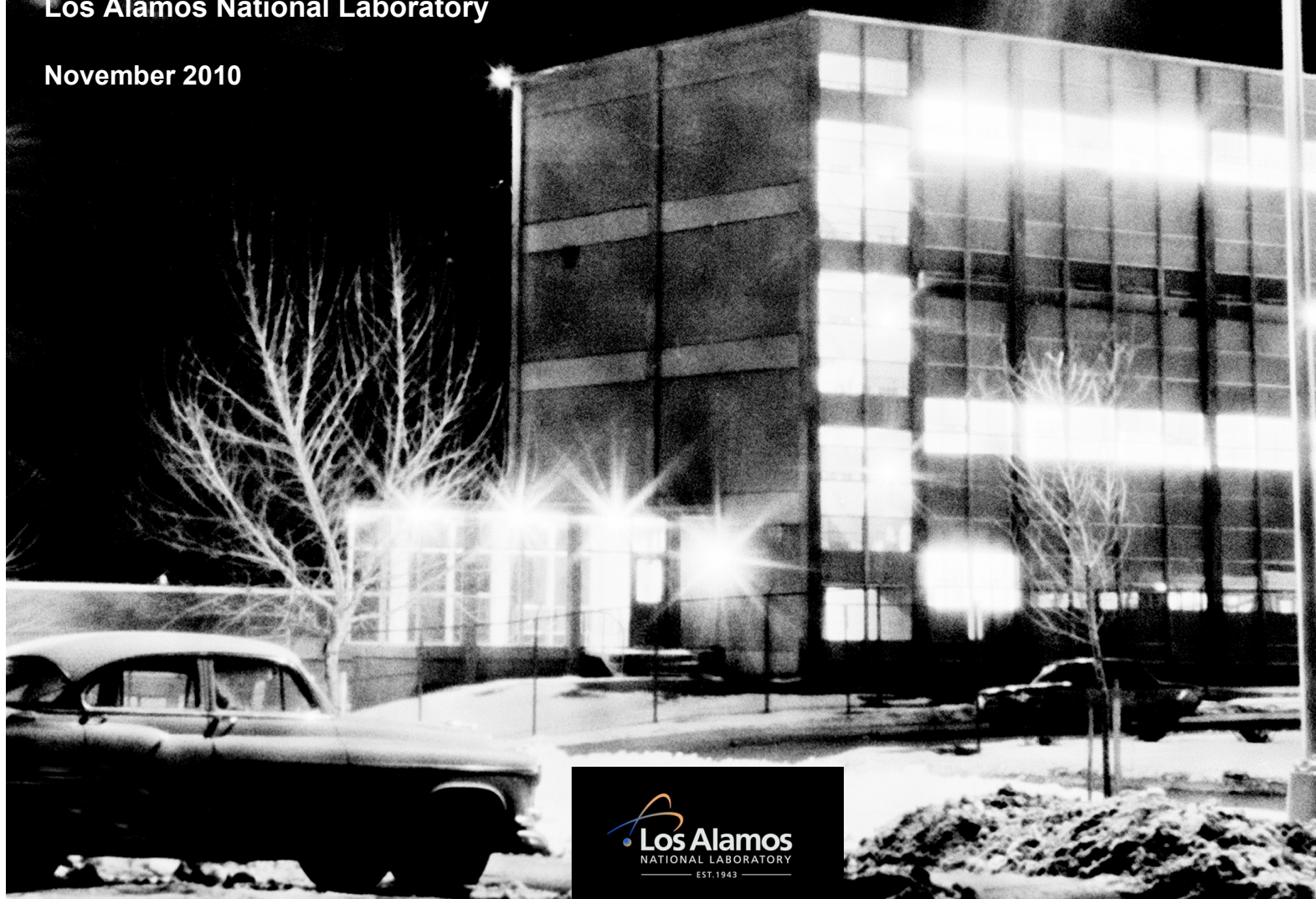
## **A History of the Los Alamos Administration Building (1956–2006)**

### **Volume 2**

**Historic Building Survey Report No. 309**

**Los Alamos National Laboratory**

**November 2010**



Editing and Composition by Hector Hinojosa, Group IRM-CAS

**Cover photo:** Administration Building at night, circa 1957 (LANL Photography).

Los Alamos National Laboratory, an affirmative action/equal opportunity employer, is operated by the Los Alamos National Security, LLC for the National Nuclear Security Administration of the U.S. Department of Energy under contract DE-AC52-06NA25396. By acceptance of this article, the publisher recognizes that the U.S. Government retains a nonexclusive, royalty-free license to publish or reproduce the published form of this contribution, or to allow others to do so, for U.S. Government purposes. Los Alamos National Laboratory requests that the publisher identify this article as work performed under the auspices of the U.S. Department of Energy. Los Alamos National Laboratory strongly supports academic freedom and a researcher's right to publish; as an institution, however, the Laboratory does not endorse the viewpoint of a publication or guarantee its technical correctness.

Los Alamos National Laboratory Historic Building Survey  
Index to Photographs

Technical Area (TA) 3 “South Mesa Site” (SM)  
Structure 43 (TA-3-43)  
Los Alamos National Laboratory (LANL)  
Los Alamos  
Los Alamos County  
New Mexico

Notes: The Los Alamos National Laboratory (LANL) is divided into different geographic areas called technical areas (TAs) that are designated by numbers. The properties at TA-3 “South Mesa Site” are identified using the current LANL system of placing the “TA” prefix and TA number before each building and structure number, creating a unique property identifier (i.e., TA-3-43).

The Administration Building at LANL is located on South Mesa, across Los Alamos Canyon and south of the town of Los Alamos. First occupied in March of 1956, the building is situated within LANL’s TA-3. The “Admin” Building, also known as SM (South Mesa) 43, was the administrative center of the Laboratory for 50 years. As the heart of Laboratory activities during the Cold War years and beyond (from July 1956 to May 2006), the Admin Building not only housed the people and the bureaucracies needed to run a major national scientific laboratory but was itself the site of significant research and development projects for much of its lifetime.

This eligible building is excess LANL property and is scheduled for clean up and eventual demolition. The Decontamination and Decommissioning (D&D) action is in accordance with LANL’s commitment to clean up inactive sites and facilities “so that no unacceptable risk to the public or environment remains” (U.S. Department of Energy 1994). The removal of this property will be carried out by LANL’s D&D Program. (For additional information see related project documentation: “*LANL Administration Building, TA-3-43; An Eligibility Assessment Report*, LA-UR-01-2303, Cultural Resource Report No. 192 and this report final report “*SM-43, Nerve Center of a National Laboratory: A History of the Los Alamos Administration Building (1956–2006)*,” LA-UR-11-00922, Historic Building Report No. 309).

#### References

- Los Alamos National Laboratory  
2001 “The Laboratory in a Changing World: A Los Alamos Chronology.” Los Alamos National Laboratory report LALP-01-65.
- U.S. Department of Energy  
1994 *Environmental Restoration and Waste Management Five-Year Plan Fiscal Years 1994-1998*. DOE/S-00097P, U.S. Department of Energy, Washington, D.C.

Los Alamos National Laboratory Historic Building Survey  
Index to Photographs

Technical Area (TA) 3 “South Mesa Site” (SM) continued  
Structure 43 (TA-3-43)  
Los Alamos National Laboratory (LANL)  
Los Alamos  
Los Alamos County  
New Mexico

Mike O’Keefe, Photographer, IRM-RMMSO, LANL

March 30, 2006; April 14 and 26, 2006; May 11, 17, and 25, 2006; June 22 and 29, 2006; July 19 and 31, 2006; August 1, 2, and 3, 2006; November 21, 2006; December 5, 6, 7, 14, and 19, 2006; May 14, 2007; and June 18, 2007

RB06-001-001 through RB06-001-185, RB07-004-001 through RB07-004-112, RB07-007-001 through RB07-007-012, RB07-011-001 through RB07-011-003, di080235001 through di080235015, di100261001 through di100261013.

Richard Robinson, Photographer, IRM-RMMSO, LANL  
September 3, 2008

RB08-005-001 through RB08-005-008

The LANL Administration Building TA-3-43 (SM-43) is “H-shaped” with the main entrance on the north side of the crossbar of the “H.” The exterior building photos refer to the wings/arms of the “H” by their location (southwest, southeast, northwest, and northeast wings). The interior building photos location descriptions follow the existing floor plan wing designations (A, B, C, and D wings). “A” wing is the west/left leg of the “H,” “B” wing is the western/left half of the crossbar of the “H,” “C” wing is the eastern/right half of the crossbar of the “H,” and “D” wing is the east/right leg of the “H.”

Photograph

<u>Number</u>	<u>Description</u>
---------------	--------------------

North side of the building’s “crossbar” (front) was photographed in five sections and presented here from east to west (sections 1 through 5).

RB07-004-038	TA-3-43, north side of building “crossbar” (front), from east to west, section 1 of 5, facing south.
RB07-004-039	TA-3-43, north side of building “crossbar” (front), from east to west, section 2 of 5, facing south. Main entrance at right side of photo.



Los Alamos National Laboratory Historic Building Survey  
Index to Photographs

Technical Area (TA) 3 “South Mesa Site” (SM) continued  
Structure 43 (TA-3-43)  
Los Alamos National Laboratory (LANL)  
Los Alamos  
Los Alamos County  
New Mexico

<u>Photograph Number</u>	<u>Description</u>
RB07-004-040	TA-3-43, north side of building “crossbar” (front), main entrance, from east to west, section 3 of 5, facing south. Main entrance.
RB07-004-042	TA-3-43, north side of building “crossbar” (front), from east to west, section 4 of 5, facing south.
RB07-004-043	TA-3-43, north side of building “crossbar” (front), from east to west, section 5 of 5, facing south.
RB07-004-044	TA-3-43, east side of northwest wing, southern section, facing west.
RB07-004-046	TA-3-43, east side of northwest wing, northern section, facing west.
RB07-004-034	TA-3-43, north side of northwest wing, facing southwest.
RB07-004-033	TA-3-43, north side of northwest wing, facing southeast.

West side of the northwest and southwest wings was photographed in eight sections and presented here from north to south (sections 1 through 8).

RB07-004-032	TA-3-43, west side of northwest wing, from north to south, section 1 of 8, facing east.
RB07-004-030	TA-3-43, west side of northwest wing, from north to south, section 2 of 8, facing east. Walkway connected to the former Scyllac Building, TA-3-287.
RB07-004-029	TA-3-43, west side of northwest wing, from north to south, section 3 of 8, facing east. Walkway connected to the former Scyllac Building, TA-3-287.
RB07-004-028	TA-3-43, west side of northwest wing, from north to south, section 4 of 8, facing east.

Los Alamos National Laboratory Historic Building Survey  
Index to Photographs

Technical Area (TA) 3 “South Mesa Site” (SM) continued  
Structure 43 (TA-3-43)  
Los Alamos National Laboratory (LANL)  
Los Alamos  
Los Alamos County  
New Mexico

Photograph  
Number

Description

RB07-004-027	TA-3-43, west side of southwest wing, from north to south, section 5 of 8, facing east.
RB07-004-026	TA-3-43, west side of southwest wing, from north to south, section 6 of 8, facing east.
RB07-004-025	TA-3-43, west side of southwest wing, from north to south, section 7 of 8, facing east.
RB07-004-024	TA-3-43, west side of southwest wing, from north to south, section 8 of 8, facing east.
RB07-004-001	TA-3-43, south side of southwest wing, facing north.
RB07-004-053	TA-3-43, south and east sides of southwest wing, facing northwest.

East side of the southwest wing was photographed in three sections and presented here from south to north (sections 1 through 3).

RB07-004-051	TA-3-43, east side of southwest wing, from south to north, section 1 of 3, facing southwest.
RB07-004-052	TA-3-43, east side of southwest wing, from south to north, section 1 of 3, facing west.
RB07-004-050	TA-3-43, east side of southwest wing, from south to north, section 2 of 3, facing west.
RB07-004-049	TA-3-43, east side of southwest wing, from south to north, section 3 of 3, facing west.

Los Alamos National Laboratory Historic Building Survey  
Index to Photographs

Technical Area (TA) 3 “South Mesa Site” (SM) continued  
Structure 43 (TA-3-43)  
Los Alamos National Laboratory (LANL)  
Los Alamos  
Los Alamos County  
New Mexico

Photograph  
Number

Description

South side of the building’s “crossbar” (back) was photographed in four sections and presented here from west to east (sections 1 through 4).

- |              |   |
|--------------|---|
| RB07-004-056 | TA-3-43, east side of southwest wing and south side of building “crossbar” (back), from west to east, section 1 of 4, facing north. |
| RB07-004-004 | TA-3-43, south side of building “crossbar” (back), from west to east, section 2 of 4, facing north.                                 |
| RB07-004-005 | TA-3-43, south side of building “crossbar” (back), from west to east, section 3 of 4, facing north.                                 |
| RB07-004-006 | TA-3-43, south side of building “crossbar” (back) and west side of southeast wing, from west to east, section 4 of 4, facing north. |
| RB07-004-054 | TA-3-43, south side of building “crossbar” (back), parking lot, facing north.   |

West side of the southeast wing was photographed in three sections and presented here from north to south (sections 1 through 3).

- |              |   |
|--------------|---|
| RB07-004-007 | TA-3-43, west side of southeast wing, from north to south, section 1 of 3, facing east.                 |
| RB07-004-008 | TA-3-43, west side of southeast wing, from north to south, section 2 of 3, facing east.                 |
| RB07-004-009 | TA-3-43, west side of southeast wing, from north to south, section 3 of 3, facing east.                 |
| RB07-004-010 | TA-3-43, south side of southeast wing, facing north-northeast.  |
| RB07-004-013 | TA-3-43, south side of southeast wing and east side of southeast and northeast wings, facing northwest. |

Los Alamos National Laboratory Historic Building Survey  
Index to Photographs

Technical Area (TA) 3 “South Mesa Site” (SM) continued  
Structure 43 (TA-3-43)  
Los Alamos National Laboratory (LANL)  
Los Alamos  
Los Alamos County  
New Mexico

Photograph  
Number

Description

RB07-004-022      TA-3-43, east side of southeast and northeast wings, facing northwest.  
Walkway connected to the Computer Building, TA-3-132.

East side of the southeast wing was photographed in seven sections and presented here from south to north (sections 1 through 7).

RB07-004-014      TA-3-43, east side of southeast wing, from south to north, section 1 of 7, facing west.

RB07-004-015      TA-3-43, east side of southeast wing, from south to north, section 2 of 7, facing west.

RB07-004-016      TA-3-43, east side of southeast wing, from south to north, section 3 of 7, facing west. Loading dock right side of photo.

RB07-004-019      TA-3-43, east side of southeast wing, from south to north, section 4 of 7, facing west. Loading dock center of photo.

RB07-004-020      TA-3-43, east side of southeast wing, from south to north, section 5 of 7, facing west.

RB07-004-017      TA-3-43, east side of southeast wing, from south to north, section 6 of 7, facing west. Walkway connect to the Computer Building, TA-3-132, at left side of photo.

RB07-004-018      TA-3-43, east side of southeast wing, from south to north, section 7 of 7, facing west.

RB07-004-021      TA-3-43, east side of northeast and southeast wings, facing southwest. Walkway connected to the Computer Building, TA-3-132.

RB07-004-048      TA-3-43, north side of northeast wing, facing southeast. Walkway connected to the Oppenheimer Study Center, TA-3-207.



Los Alamos National Laboratory Historic Building Survey  
Index to Photographs

Technical Area (TA) 3 “South Mesa Site” (SM) continued  
Structure 43 (TA-3-43)  
Los Alamos National Laboratory (LANL)  
Los Alamos  
Los Alamos County  
New Mexico

Photograph  
Number

Description

West side of the northeast wing was photographed in two sections and presented here from north to south (sections 1 and 2).

RB07-004-036	TA-3-43, west side of northeast wing, from north to south, section 1 of 2, facing east.
RB07-004-037	TA-3-43, west side of northeast wing, from north to south, section 2 of 2, facing east.
RB06-001-055	TA-3-43, north subbasement, “D” wing, hallway, facing north.
RB06-001-056	TA-3-43, north subbasement, “D” wing, hallway, facing south.
RB06-001-085	TA-3-43, north subbasement, “D” wing, room D60, office, facing east-southeast.
RB06-001-086	TA-3-43, north subbasement, “D” wing, room D79, office, facing west-northwest.
RB06-001-087	TA-3-34, north subbasement, “D” wing, stairwell number 10, facing northeast.
RB06-001-035	TA-3-43, basement, “A” wing, room A5, utility equipment room, facing southwest.
RB07-011-003	TA-3-43, basement, “A” wing, room A6D, film vault door, facing east.
RB07-011-001	TA-3-43, basement, “A” wing, room A6D, film vault, facing south.
RB07-011-002	TA-3-43, basement, “A” wing, room A6D, film vault, facing north.
RB06-001-032	TA-3-43, basement, “A” wing, room A7, equipment room, facing northeast.

## Index to Photographs

Technical Area (TA) 3 “South Mesa Site” (SM) continued  
Structure 43 (TA-3-43)  
Los Alamos National Laboratory (LANL)  
Los Alamos  
Los Alamos County  
New Mexico

<u>Photograph Number</u>	<u>Description</u>
RB06-001-033	TA-3-43, basement, “A” wing, room A7, equipment room, facing north northwest.
RB06-001-101	TA-3-43, basement, “A” wing, room A10, storage room, looking into room A10A, facing south.
RB06-001-100	TA-3-43, basement, “A” wing, room A11, storage room, facing north.
RB06-001-102	TA-3-43, basement, “A” wing, room A11A, storage room, facing south.
RB06-001-097	TA-3-43, basement, “A” wing, north portion of hallway 10W, facing south.
RB06-001-098	TA-3-43, basement, “A” wing, north portion of hallway 10W, facing north.
RB06-001-110	TA-3-43, basement, “B” wing, room B4, part of old print shop, facing north.
RB06-001-113	TA-3-43, basement, “B” wing, room B13B, looking into “salvage area” from hallway entrance, facing northwest.
RB06-001-112	TA-3-43, basement, “B” wing, room B13C, (B13CB at left and B13CA at right), looking into “salvage area,” facing southeast.
RB06-001-111	TA-3-43, basement, “B” wing, room B13D, looking into “salvage area,” facing southwest.
RB06-001-034	TA-3-43, basement, “B” wing, room B14, utility and equipment room, facing west-southwest.
RB06-001-108	TA-3-43, basement, “B” wing, room B16, part of old print shop, looking into rooms B16A at left and B4 at right, facing northwest.
RB06-001-109	TA-3-43, basement, “B” wing, room B16, part of old print shop, facing south-southwest.

## Index to Photographs

Technical Area (TA) 3 “South Mesa Site” (SM) continued  
Structure 43 (TA-3-43)  
Los Alamos National Laboratory (LANL)  
Los Alamos  
Los Alamos County  
New Mexico

<u>Photograph Number</u>	<u>Description</u>
RB06-001-107	TA-3-43, basement, “B” wing, room B17A, part of old print shop, looking into room B16, facing north.
RB06-001-036	TA-3-43, basement, “B” wing, hallway 10S, facing east.
RB06-001-104	TA-3-43, basement, “C” wing, hallway C30A, facing west.
RB06-001-105	TA-3-43, basement, “C” wing, hallway C30B, vault doors at left side of photo, facing west.
RB06-001-103	TA-3-43, basement, “C” wing, room C36, office, facing southeast.
RB06-001-106	TA-3-43, basement, “C” wing, room C52, copy/supply room, facing west.
RB06-001-071	TA-3-43, basement, “D” wing, south portion of hallway 10E, facing south.
di080235007	TA-3-43, basement, “D” wing, hallway 10E, circa 1950s map of the United States of America.
di080235008	TA-3-43, basement, “D” wing, hallway 10E, circa 1950s map of the world.
di080235009	TA-3-43, basement, “D” wing, hallway 10E, circa 1950s map focusing on Australia and New Zealand.
di080235010	TA-3-43, basement, “D” wing, hallway 10E, circa 1950s map of North America, top half of map.
di080235011	TA-3-43, basement, “D” wing, hallway 10E, circa 1950s map of North America, bottom half of map.
di080235012	TA-3-43, basement, “D” wing, hallway 10E, circa 1950s map of South America.

## Index to Photographs

Technical Area (TA) 3 “South Mesa Site” (SM) continued  
Structure 43 (TA-3-43)  
Los Alamos National Laboratory (LANL)  
Los Alamos  
Los Alamos County  
New Mexico

### Photograph

#### Number

#### Description

di080235013	TA-3-43, basement, “D” wing, hallway 10E, circa 1950s map of the world, left half of map.
di080235014	TA-3-43, basement, “D” wing, hallway 10E, circa 1950s map of the world, right half of map.
di080235015	TA-3-43, basement, “D” wing, hallway 10E, circa 1950s map of the United States of America.

Room D38 is a split level room. Entrance into the space is at the basement level. From the room landing one either goes down to the lower level of the space (rooms D38, D38A, D38B, and D38C) or up to the mezzanine level (room D38M).

RB07-004-081	TA-3-43, basement, “D” wing, room D38, looking up stairs from lower level to entrance door level, facing west.
RB07-004-072	TA-3-43, basement, “D” wing, room D38, lower level, conference area, facing north.
RB07-004-074	TA-3-43, basement, “D” wing, room D38, lower level, conference area, facing south.
RB07-004-078	TA-3-43, basement, “D” wing, room D38A, lower level, audio-visual room, facing northwest.
RB07-004-080	TA-3-43, basement, “D” wing, room D38A, lower level, audio-visual room, facing northeast.
RB07-004-077	TA-3-43, basement, “D” wing, room D38B, lower level, computer and supply room, facing west.
RB07-004-076	TA-3-43, basement, “D” wing, room D38C, lower level, small computer conference room, facing northwest.



## Index to Photographs

Technical Area (TA) 3 “South Mesa Site” (SM) continued  
Structure 43 (TA-3-43)  
Los Alamos National Laboratory (LANL)  
Los Alamos  
Los Alamos County  
New Mexico

<u>Photograph Number</u>	<u>Description</u>
RB07-004-082	TA-3-43, basement, “D” wing, room D38, looking down stairs from mezzanine level, facing south.
RB07-004-085	TA-3-43, basement, “D” wing, room D38M, mezzanine level, facing southwest.
RB07-004-086	TA-3-43, basement, “D” wing, room D38M, mezzanine level, facing northwest.
RB06-001-125	TA-3-43, basement, “D” wing, room D82, office, facing northeast.
RB06-001-045	TA-3-43, first floor, “C” wing, front entrance lobby, north side of building, room C100, facing southeast.
RB06-001-048	TA-3-43, first floor, “C” wing, front entrance lobby, north side of building, room C100, facing northwest.
RB06-001-123	TA-3-43, first floor, “A” wing, hallway 100W, facing north.
RB07-004-060	TA-3-43, first floor, “A” wing, room A110B, women’s restroom with “specimen sample” pass-through door, facing northeast.
RB06-001-120	TA-3-43, first floor, “A” wing, rooms A115 and A109, former S-7, Classification Group, Security and Safeguards Division, Publications Release Office, facing southwest.
RB06-001-118	TA-3-43, first floor, “A” wing, room A116, former S-7, Classification Group, Security and Safeguards Division, Group Office, from room A116E looking through room A116 into room A118, facing north.
RB06-001-122	TA-3-43, first floor, “A” wing, room 123, former S-7, Classification Group, Security and Safeguards Division, office, facing northwest.

## Index to Photographs

Technical Area (TA) 3 “South Mesa Site” (SM) continued  
Structure 43 (TA-3-43)  
Los Alamos National Laboratory (LANL)  
Los Alamos  
Los Alamos County  
New Mexico

### Photograph

#### Number

#### Description

RB06-001-121	TA-3-43, first floor, “A” wing, room 125, former S-7, Classification Group, Security and Safeguards Division, office, facing southwest.
RB06-001-129	TA-3-43, first floor, “A” wing, room A164, NIS Group “Harold M. Agnew Conference Room,” facing north.
RB06-001-130	TA-3-43, first floor, “A” wing, room A164, NIS Group “Harold M. Agnew Conference Room,” facing south.
RB06-001-180	TA-3-43, first floor, “B” wing, room B121, auditorium, from back of room, facing west.
RB06-001-185	TA-3-43, first floor, “B” wing, room B121, auditorium, from middle of room, facing west.
di080235006	TA-3-43, first floor, “B” wing, room B121, auditorium, from middle of room, facing west.
RB06-001-184	TA-3-43, first floor, “B” wing, room B121, auditorium, from directly in front of stage, facing west.
RB06-001-177	TA-3-43, first floor, “B” wing, room B121, auditorium, facing southwest.
RB06-001-178	TA-3-43, first floor, “B” wing, room B121, auditorium, facing northwest.
RB06-001-181	TA-3-43, first floor, “B” wing, room B121, auditorium, facing southeast.
RB06-001-182	TA-3-43, first floor, “B” wing, room B121, auditorium, facing northeast.
RB06-001-183	TA-3-43, first floor, “B” wing, room B121, auditorium, from center of stage, facing east.
RB06-001-013	TA-3-43, first floor, “B” wing, room B121, auditorium, posters on north wall, facing north-northwest.

## Index to Photographs

Technical Area (TA) 3 “South Mesa Site” (SM) continued  
Structure 43 (TA-3-43)  
Los Alamos National Laboratory (LANL)  
Los Alamos  
Los Alamos County  
New Mexico

<u>Photograph Number</u>	<u>Description</u>
RB06-001-014	TA-3-43, first floor, “B” wing, room B121, auditorium, mural on north wall, facing northwest.
di080235001	TA-3-43, first floor, “B” wing, room B121, auditorium, mural on north wall, facing northwest.
RB06-001-019	TA-3-43, first floor, “B” wing, room B121, auditorium, posters on south wall, facing south-southwest.
RB06-001-018	TA-3-43, first floor, “B” wing, room B121, auditorium, mural on south wall, facing southwest.
di080235003	TA-3-43, first floor, “B” wing, room B121, auditorium, mural on south wall, facing southwest.
RB06-001-020	TA-3-43, second floor, “B” wing, room B226, electronics control booth for auditorium room B121, looking into room B226A, facing north.
RB06-001-021	TA-3-43, second floor, “B” wing, room B226A, electronics control booth for auditorium room B121, facing north.
RB06-001-023	TA-3-43, second floor, “B” wing, room B226A, electronics control booth for auditorium room B121, looking into room B226, facing south.
RB07-004-058	TA-3-43, first floor, “B” wing, overall view of east side of hallway immediately to the east of the auditorium (room B121), east-side wall displays, facing southeast.
RB06-001-046	TA-3-43, first floor, “B” wing, east side of hallway immediately to the east of the auditorium (room B121), north set of east-side wall displays, facing southeast.
RB07-004-059	TA-3-43, first floor, “B” wing, east side of hallway immediately to the east of the auditorium (room B121), north set of east-side wall displays, facing northeast.

## Index to Photographs

Technical Area (TA) 3 “South Mesa Site” (SM) continued  
Structure 43 (TA-3-43)  
Los Alamos National Laboratory (LANL)  
Los Alamos  
Los Alamos County  
New Mexico

### Photograph

#### Number

#### Description

RB06-001-047	TA-3-43, first floor, “B” wing, east side of hallway immediately to the east of the auditorium (room B121), south set of east-side wall displays, facing southeast.
RB06-001-057	TA-3-43, first floor, “B” wing, east side of hallway immediately to the east of the auditorium (room B121), south set of east-side wall displays, facing northeast.
RB06-001-024	TA-3-43, first floor, “B” wing, overall view of west side of hallway immediately to the east of the auditorium (room B121), west-side wall displays, facing south-southwest. Auditorium entrance doors on west wall.
RB06-001-037	TA-3-43, first floor, “B” wing, hallway immediately to the east of the auditorium (room B121), looking into front entrance lobby (room C100), facing north.
RB06-001-058	TA-3-43, first floor, “B” wing, west side of hallway immediately to the east of the auditorium (room B121), south set of west-side wall displays, facing northwest.
RB06-001-059	TA-3-43, first floor, “B” wing, west side of hallway immediately to the east of the auditorium (room B121), south set of west-side wall displays, facing southwest.
RB06-001-060	TA-3-43, first floor, “B” wing, west side of hallway immediately to the east of the auditorium (room B121) between the two sets of auditorium entrance doors, north set of west-side wall displays, facing northwest.
RB06-001-061	TA-3-43, first floor, “B” wing, west side of hallway immediately to the east of the auditorium (room B121) between the two sets of auditorium entrance doors, north set of west-side wall displays, facing southwest.



## Index to Photographs

Technical Area (TA) 3 “South Mesa Site” (SM) continued  
Structure 43 (TA-3-43)  
Los Alamos National Laboratory (LANL)  
Los Alamos  
Los Alamos County  
New Mexico

### Photograph

#### Number

#### Description

RB06-001-039 TA-3-43, first floor, “C” wing, hallway 100S, overall view of wall displays on north wall of hallway, facing north-northeast.

Close-ups of west side of displays on north wall of hallway 100S, first floor, “C” wing, were photographed in five sections and presented here from west to east (sections 1 through 5).

RB06-001-040 TA-3-43, first floor, “C” wing, hallway 100S, close-up of west side of displays on north wall of hallway, west to east down hallway, section 1 of 5, facing northeast.

RB06-001-041 TA-3-43, first floor, “C” wing, hallway 100S, close-up of west side of displays on north wall of hallway, west to east down hallway, section 2 of 5, facing northeast.

RB06-001-042 TA-3-43, first floor, “C” wing, hallway 100S, close-up of west side of displays on north wall of hallway, west to east down hallway, section 3 of 5, facing northeast.

RB06-001-043 TA-3-43, first floor, “C” wing, hallway 100S, close-up of west side of displays on north wall of hallway, west to east down hallway, section 4 of 5, facing northeast.

RB06-001-044 TA-3-43, first floor, “C” wing, hallway 100S, close-up of west side of displays on north wall of hallway, west to east down hallway, section 5 of 5, facing northeast.

Close-ups of east side of displays on north wall of hallway 100S, first floor, “C” wing, were photographed in four sections and presented here from east to west (sections 1 through 4).

RB06-001-070 TA-3-43, first floor, “C” wing, hallway 100S, close-up of east side of displays on north wall of hallway, east to west down hallway, section 1 of 4, facing northwest.

## Index to Photographs

Technical Area (TA) 3 “South Mesa Site” (SM) continued  
Structure 43 (TA-3-43)  
Los Alamos National Laboratory (LANL)  
Los Alamos  
Los Alamos County  
New Mexico

<u>Photograph Number</u>	<u>Description</u>
RB06-001-069	TA-3-43, first floor, “C” wing, hallway 100S, close-up of east side of displays on north wall of hallway, east to west down hallway, section 2 of 4, facing northwest.
RB06-001-068	TA-3-43, first floor, “C” wing, hallway 100S, close-up of east side of displays on north wall of hallway, east to west down hallway, section 3 of 4, facing northwest.
RB06-001-063	TA-3-43, first floor, “C” wing, hallway 100S, close-up of east side of displays on north wall of hallway, east to west down hallway, section 4 of 4, facing northwest.
RB07-004-103	TA-3-43, first floor, “C” wing, room C112, inner secure office of a Sensitive Compartmented Information Facility (SCIF), facing northwest.
RB07-004-102	TA-3-43, first floor, “C” wing, room C112A, inner secure office of a SCIF, facing northwest.
RB07-004-106	TA-3-43, first floor, “C” wing, room C125, inner secure office hallway of a SCIF, facing north.
RB07-004-104	TA-3-43, first floor, “C” wing, room C125F, inner secure office of a SCIF, facing south.
RB07-004-105	TA-3-43, first floor, “C” wing, room C125F, inner secure office of a SCIF, facing north.
RB06-001-143	TA-3-43, first floor, “C” wing, room C128B, inner secure NIS Group “Turquoise Conference Room,” in the SCIF, facing south.
RB06-001-144	TA-3-43, first floor, “C” wing, room C128B, inner secure NIS Group “Turquoise Conference Room,” in the SCIF, facing north.

## Index to Photographs

Technical Area (TA) 3 “South Mesa Site” (SM) continued  
Structure 43 (TA-3-43)  
Los Alamos National Laboratory (LANL)  
Los Alamos  
Los Alamos County  
New Mexico

<u>Photograph Number</u>	<u>Description</u>
RB06-001-145	TA-3-43, first floor, “C” wing, room C128B, inner secure NIS Group “Turquoise Conference Room,” in the SCIF, posters on west wall, facing west.
RB07-004-101	TA-3-43, first floor, “C” wing, room C140, inner secure office of a SCIF, facing west.
RB06-001-124	TA-3-43, first floor, “D” wing, room D109A, kitchen space with sliding door, facing northwest.
RB06-001-131	TA-3-43, first floor, “D” wing, room D115, “Green Room,” conference room, facing north.
RB06-001-132	TA-3-43, first floor, “D” wing, room D115, “Green Room,” conference room, facing south-southwest.
RB06-001-133	TA-3-43, first floor, “D” wing, room D123, “Blue Room” doors, classified conference room, facing northwest.
RB07-004-068	TA-3-43, second floor, “A” wing, hallway 200W, facing south.
RB07-004-069	TA-3-43, second floor, “A” wing, hallway 200W, facing north.
RB08-005-002	TA-3-43, second floor, “A” wing, fiberglass shower stall installed in pipe chase closet, across from room A207, facing east. The shower was connected to the building’s main water and sanitary sewer systems with connections from the first floor restrooms below.
RB08-005-003	TA-3-43, second floor, “A” wing, doorway entrance into pipe chase closet where fiberglass shower stall was installed, across from room A207, facing south. Note mirror hanging on wall, shower is to the right of the mirror. The shower was connected to the building’s main water and sanitary sewer systems with connections from the first floor restrooms below.

## Index to Photographs

Technical Area (TA) 3 “South Mesa Site” (SM) continued  
Structure 43 (TA-3-43)  
Los Alamos National Laboratory (LANL)  
Los Alamos  
Los Alamos County  
New Mexico

<u>Photograph Number</u>	<u>Description</u>
RB07-004-096	TA-3-43, second floor, “A” wing, room A208, office, facing southeast.
RB07-004-097	TA-3-43, second floor, “A” wing, room A210, office, doorway leads into room A210A, facing northeast.
RB07-004-098	TA-3-43, second floor, “A” wing, room A210A, office, looking into room A216, facing north northwest.
RB08-005-008	TA-3-43, second floor, “A” wing, room A214, copy room/kitchen, looking into room from hallway, facing northeast. This copy room/kitchen is the room involved in the security incident that happened during the Cerro Grande Fire in May of 2000. It involved two classified hard drives that were noted as missing and then reappeared behind a copying machine on this secure floor of the building.
RB08-005-006	TA-3-43, second floor, “A” wing, room A214, copy room/kitchen, facing southeast. This copy room/kitchen is the room involved in the security incident that happened during the Cerro Grande Fire in May of 2000. It involved two classified hard drives that were noted as missing and then reappeared behind a copying machine on this secure floor of the building.
RB08-005-005	TA-3-43, second floor, “A” wing, room A214, copy room/kitchen, facing northwest. This copy room/kitchen is the room involved in the security incident that happened during the Cerro Grande Fire in May of 2000. It involved two classified hard drives that were noted as missing and then reappeared behind a copying machine on this secure floor of the building.
RB07-004-099	TA-3-43, second floor, “A” wing, room A216, office, facing east.
RB07-004-100	TA-3-43, second floor, “A” wing, room A221, office, facing southwest.
RB07-004-067	TA-3-43, second floor, “B and C” wings, hallway 200N, facing east.

## Index to Photographs

Technical Area (TA) 3 “South Mesa Site” (SM) continued  
Structure 43 (TA-3-43)  
Los Alamos National Laboratory (LANL)  
Los Alamos  
Los Alamos County  
New Mexico

<u>Photograph Number</u>	<u>Description</u>
RB07-004-066	TA-3-43, second floor, “B and C” wings, hallway 200N, facing west. Note exposed conduit on east end of hallway.
RB07-004-070	TA-3-43, second floor, “B and C” wings, hallway 200S, facing east.
RB07-004-071	TA-3-43, second floor, “B and C” wings, hallway 200S, facing west.
RB07-004-095	TA-3-43, second floor, “B” wing, room B204/B202, facing west.
RB07-004-094	TA-3-43, second floor, “C” wing, room C204A, inner secure office/small conference room of a SCIF, facing northeast.
RB07-004-093	TA-3-43, second floor, “C” wing, room C208, inner secure office of a SCIF, facing northeast.
RB07-004-091	TA-3-43, second floor, “C” wing, room C212/C210, inner secure offices of a SCIF, taken from room C212A looking through C212 into C210, facing west.
RB07-004-092	TA-3-43, second floor, “C” wing, room C212, inner secure office of a SCIF, taken from room C210 looking through C212 into C212A, facing east.
RB07-004-108	TA-3-43, second floor, “C” wing, room C252, inner secure office of a SCIF, facing north-northeast.
RB07-004-107	TA-3-43, second floor, “C” wing, room C258, inner secure office stairwell of a SCIF, facing northeast.
RB07-004-109	TA-3-43, second floor, “C” wing, room C259, inner secure office of a SCIF, looking into room C237, facing southeast. Black vault door leads into vault room, C259A.
RB07-004-110	TA-3-43, second floor, “C” wing, vault room C259A, inner secure office of a SCIF, facing northwest.

## Index to Photographs

Technical Area (TA) 3 “South Mesa Site” (SM) continued  
Structure 43 (TA-3-43)  
Los Alamos National Laboratory (LANL)  
Los Alamos  
Los Alamos County  
New Mexico

### Photograph

<u>Number</u>	<u>Description</u>
RB07-004-089	TA-3-43, second floor, “D” wing, room D205, office, facing northwest.
RB07-004-088	TA-3-43, second floor, “D” wing, room D214, office, facing southeast.
RB07-004-087	TA-3-43, second floor, “D” wing, room D221, office, looking into room D221A, facing northwest.
RB07-004-090	TA-3-43, second floor, “D” wing, room D236, office, looking into D236A, facing south-southeast.
RB06-001-140	TA-3-43, second floor, “D” wing, room D240, X-DO Conference Room, facing north.
RB06-001-141	TA-3-43, second floor, “D” wing, room D 240, X-DO Conference Room, facing south.
<p>The “Fishbowl” is an area of enclosed offices on the third floor encompassing rooms A314, A314A, A314B, A314C, and A314D. It was called the “Fishbowl” by building residents. (This name was given because, when looking out through the glass on the entrance door, it looked like one was looking out of a fishbowl.)</p>	
RB06-001-166	TA-3-43, third floor, “A” wing, room A314, “Fishbowl Area,” main reception area, facing southwest.
RB06-001-168	TA-3-43, third floor, “A” wing, room A314, “Fishbowl Area,” main reception area, facing northwest.
RB06-001-155	TA-3-43, third floor, “A” wing, room A314A, “Fishbowl Area,” office, facing southeast.
RB06-001-156	TA-3-43, third floor, “A” wing, room A314A, “Fishbowl Area,” office, door leads into room A314B, facing northeast.

## Index to Photographs

Technical Area (TA) 3 “South Mesa Site” (SM) continued  
Structure 43 (TA-3-43)  
Los Alamos National Laboratory (LANL)  
Los Alamos  
Los Alamos County  
New Mexico

### Photograph

<u>Number</u>	<u>Description</u>
RB06-001-157	TA-3-43, third floor, “A” wing, room A314A, “Fishbowl Area,” office, door leads into room A314, facing northwest.
RB06-001-159	TA-3-43, third floor, “A” wing, room A314A, “Fishbowl Area,” office, door leads into room A314, facing southwest.
RB06-001-160	TA-3-43, third floor, “A” wing, room A314B, “Fishbowl Area,” office, door leads into room A314A, facing southeast.
RB06-001-161	TA-3-43, third floor, “A” wing, room A314B, “Fishbowl Area,” office, facing northeast.
RB06-001-164	TA-3-43, third floor, “A” wing, room A314B, “Fishbowl Area,” office, door leads into room A314, facing northwest.
RB06-001-165	TA-3-43, third floor, “A” wing, room A314B, “Fishbowl Area,” office, door leads into room A314, facing southwest.
Room A330 (Tapa Conference Room) derived its name from souvenirs brought back, by J-Division personnel, from the Pacific; tapas, or decorative bark cloths, were often used by Pacific Islanders to cover the walls of their homes.	
RB06-001-146	TA-3-43, third floor, “A” wing, room A330, J-Division “Tapa Conference Room,” tapa cloths on north wall, facing north.
di100261001	TA-3-43, third floor, “A” wing, room A330, J-Division “Tapa Conference Room,” tapa cloths on north wall, facing north.
di100261002	TA-3-43, third floor, “A” wing, room A330, J-Division “Tapa Conference Room,” smaller tapa cloth on north wall, facing north.
RB06-001-147	TA-3-43, third floor, “A” wing, room A330, J-Division “Tapa Conference Room,” facing south.

## Index to Photographs

Technical Area (TA) 3 “South Mesa Site” (SM) continued  
Structure 43 (TA-3-43)  
Los Alamos National Laboratory (LANL)  
Los Alamos  
Los Alamos County  
New Mexico

### Photograph

#### Number

#### Description

RB06-001-148	TA-3-43, third floor, “A” wing, room A330, J-Division “Tapa Conference Room,” J-Division Leader photographs and “Parry Island Amusement Park” sign, facing east-northeast.
di100261006	TA-3-43, third floor, “A” wing, room A330, J-Division “Tapa Conference Room,” J-Division Leader photographs, facing east.  Left column: Darol L. Froman, J-Division Leader, 1947–1948; Alvin C. Graves, J-Division Leader, 1948–1965 Center column: William E. Ogle, J-Division Leader, 1965–1972; Charles L. Browne, J-Division Leader, 1972–1974 Right: John C. Hopkins, J-Division Leader, 1974–1982
RB06-001-149	TA-3-43, third floor, “A” wing, room A330, J-Division “Tapa Conference Room,” “Parry Island Amusement Park” sign and J-Division Leader photographs plus others, facing east southeast.
di100261012	TA-3-43, third floor, “A” wing, room A330, J-Division “Tapa Conference Room,” J-Division Leader photographs plus others, facing east.  Top row: T.T. Scolman, Deputy Associate Director Test Operations, (formerly J-Division—1982–1986), J-Division Leader 1986– 1988;  Jay H. Norman, J-Division Leader 1988–1994



## Index to Photographs

Technical Area (TA) 3 “South Mesa Site” (SM) continued  
Structure 43 (TA-3-43)  
Los Alamos National Laboratory (LANL)  
Los Alamos  
Los Alamos County  
New Mexico

### Photograph

#### Number

#### Description

di100261012 continued

Bottom row: Photocopy of article about “Parry Island Amusement Park” sign. See note with photo number RB06-001-150 below.

Joint Verification Experiment Participants—USA/USSR, 1988

Back Row: James Kowalczyk, IT-DO; Steve Kemic, DOE/Washington; Don Collins, J-3; Barry Bailey, J-6; Dale Engstrom, J-6; Tom McKown, P-15; Richard Kovach, J6/NTS. (Note: These names were taken directly from the placard, which omitted the names of three people.)

Seated: Keith Alrick, P-15; Don Eilers, P-15; Walt Wolff, J-DO; Roger Hill, P-15. Not present at the Award Ceremony were Bob Sharp, IT-DO, and Tom Weaver, ESS-3.

RB06-001-150      TA-3-43, third floor, “A” wing, room A330, J-Division “Tapa Conference Room,” “Parry Island Amusement Park” sign on east wall, facing east.

Parry Island Amusement Park Sign: This wooden sign, entirely fictitious—proof that humor can relieve stress—was the brainchild of Laboratory scientists who were working long hours conducting the Castle series of atmospheric nuclear tests on Bikini and Enewetak atolls in the Pacific in 1954.

di100261009      TA-3-43, third floor, “A” wing, room A330, J-Division “Tapa Conference Room,” “Parry Island Amusement Park” sign on east wall, facing east.

RB06-001-152      TA-3-43, third floor, “A” wing, room A330, J-Division “Tapa Conference Room,” tapa cloth and photos on north end of west wall, facing west.

## Index to Photographs

Technical Area (TA) 3 “South Mesa Site” (SM) continued  
Structure 43 (TA-3-43)  
Los Alamos National Laboratory (LANL)  
Los Alamos  
Los Alamos County  
New Mexico

### Photograph

#### Number

#### Description

di100261003

TA-3-43, third floor, “A” wing, room A330, J-Division “Tapa Conference Room,” tapa cloth and photos on north end of west wall, facing west.

#### Top row:

“Redwing 1956”

(left to right) Harold Stewart, Duncan Curry, John Malik, Bill Ogle, Keith Boyer, Herman Hoerlin, Robert Campbell. (Redwing is the name of a nuclear test series conducted in 1956.)

“1974, J-Division Personnel”

(left to right) Ruth Mullins, John McQueen, Peggy Bradberry, Judy Sul, and Ellen LaPlant.

“Hardtack 1”

Top row (left to right): John Marlowe, John Warren, Jim Henshall, Sid Singer, Charles Fenstermacher, Bob Engle

Bottom row (left to right): Kiko Harrison, Steve Baldenero, John Malik, Lee Neher, Jerry Allen, and Ernie Hodson. (Hardtack 1 is the name of a nuclear test series conducted in 1958.)

#### Photo at right:

“Carroll Tyler & Alvin Graves, 1951”

Tyler was in charge of the AEC Santa Fe Operations Office and Graves was a Los Alamos Scientific Laboratory test director.

#### Bottom row:

“A Pacific Readiness Exercise Meeting”

“Pacific Operations”

Raemer Schreiber (left) and Bill Ogle (right), plus others in the Pacific. Bill Ogle became leader of the Test Division at the Laboratory between 1965 and 1972 and Raemer Schreiber became technical associated director of the Laboratory in 1962.

## Index to Photographs

Technical Area (TA) 3 “South Mesa Site” (SM) continued  
 Structure 43 (TA-3-43)  
 Los Alamos National Laboratory (LANL)  
 Los Alamos  
 Los Alamos County  
 New Mexico

### Photograph

<u>Number</u>	<u>Description</u>
---------------	--------------------

di100261003 continued

#### “KC-135 Plane”

This KC-135 plane was an atmospheric nuclear test  
 diagnostics/detection aircraft.

RB06-001-153	TA-3-43, third floor, “A” wing, room A330, J-Division “Tapa Conference Room,” two tapa cloths at southwest corner, facing southwest.
di100261008	TA-3-43, third floor, “A” wing, room A330, J-Division “Tapa Conference Room,” tapa cloth on south wall, facing south.
di100261013	TA-3-43, third floor, “A” wing, room A330, J-Division “Tapa Conference Room,” tapa cloth on west wall, facing west.
RB06-001-154	TA-3-43, third floor, “A” wing, room A330, J-Division “Tapa Conference Room,” tapa cloth and photo of Pearl Harbor, Hawaii, on west wall, facing west. (Pearl Harbor Memorial dedicated in 1962 is at upper left corner of photo.)
di100261004	TA-3-43, third floor, “A” wing, room A330, J-Division “Tapa Conference Room,” tapa cloth and photo of Pearl Harbor, Hawaii, on west wall, facing west. (Pearl Harbor Memorial dedicated in 1962 is at upper left corner of photo.)
di100261010	TA-3-43, third floor, “A” wing, room A330, J-Division “Tapa Conference Room,” tapa cloth on west wall, close-up, facing west.
RB06-001-053	TA-3-43, third floor, “D” wing, hallway 300E, north end, “Weapons Program,” facing north.
RB06-001-054	TA-3-43, third floor, “D” wing, hallway 300E, north end, facing south. Note exposed conduit along ceiling.

## Index to Photographs

Technical Area (TA) 3 “South Mesa Site” (SM) continued  
Structure 43 (TA-3-43)  
Los Alamos National Laboratory (LANL)  
Los Alamos  
Los Alamos County  
New Mexico

<u>Photograph Number</u>	<u>Description</u>
RB06-001-169	TA-3-43, third floor, “D” wing, room D320, “Tahoe Conference Room,” facing south.
RB06-001-170	TA-3-43, third floor, “D” wing, room D320, “Tahoe Conference Room,” facing north.
RB06-001-171	TA-3-43, third floor, “D” wing, room D356A, “Weapons Conference Room,” facing south.
RB06-001-172	TA-3-43, third floor, “D” wing, room D356A, “Weapons Conference Room,” facing north.
RB06-001-173	TA-3-43, third floor, “D” wing, room D356A, “Weapons Conference Room” waiting room, looking into reception area room D356, facing north. The waiting room is directly north of the conference room (D356A) and south of the reception area room (D356) but it does not have a separate room number designation.
RB06-001-174	TA-3-43, third floor, “D” wing, room D356A, “Weapons Conference Room” waiting room, looking into the conference room (D356A), facing south-southwest. The waiting room is directly north of the conference room (D356A) and south of the reception area room (D356) but it does not have a separate room number designation.
RB06-001-175	TA-3-43, third floor, “D” wing, room D356, “Weapons Conference Room” reception area room, looking into waiting room, facing southwest. The waiting room is directly north of the conference room (D356A) and south of the reception area room (D356) but it does not have a separate room number designation.
RB06-001-064	TA-3-43, third floor, “D” wing, room D356A, “Weapons Conference Room” waiting room, display model of “The Gadget – Trinity Device,” facing northeast.

## Index to Photographs

Technical Area (TA) 3 “South Mesa Site” (SM) continued  
Structure 43 (TA-3-43)  
Los Alamos National Laboratory (LANL)  
Los Alamos  
Los Alamos County  
New Mexico

<u>Photograph Number</u>	<u>Description</u>
RB06-001-114	TA-3-43, third floor, “D” wing, room D362, office, facing east-southeast.
RB06-001-115	TA-3-43, third floor, “D” wing, room D366, office, facing east-southeast.
RB06-001-116	TA-3-43, third floor, “D” wing, room D370, office, facing east-southeast.
RB06-001-117	TA-3-43, third floor, “D” wing, room D381, office, facing west.
RB06-001-099	TA-3-43, fourth floor, “A” wing, hallway 400W, facing north.
RB06-001-096	TA-3-43, fourth floor, “A” wing, hallway 400W, “Department of Defense” wall display on west wall between rooms A431 and A433, facing west.
RB06-001-091	TA-3-43, fourth floor, “A” wing, room A415, office, facing southwest.
RB06-001-090	TA-3-43, fourth floor, “A” wing, room A419A, office, facing southwest.
RB06-001-088	TA-3-43, fourth floor, “A” wing, room A422, office, looking into room A420, facing southwest.
RB06-001-089	TA-3-43, fourth floor, “A” wing, room A422, office, doorway leads into hallway 400W, facing northwest.
RB06-001-126	TA-3-43, fourth floor, “A” wing, room A426, “Topaz Conference Room,” facing south.
RB06-001-127	TA-3-43, fourth floor, “A” wing, room A426, “Topaz Conference Room,” facing north.
RB06-001-128	TA-3-43, fourth floor, “A” wing, room A426, “Topaz Conference Room,” display case on east wall, facing southeast.
RB06-001-092	TA-3-43, fourth floor, “A” wing, from room A442A looking through room A442 into room A442C, offices, facing north.

## Index to Photographs

Technical Area (TA) 3 “South Mesa Site” (SM) continued  
Structure 43 (TA-3-43)  
Los Alamos National Laboratory (LANL)  
Los Alamos  
Los Alamos County  
New Mexico

### Photograph

<u>Number</u>	<u>Description</u>
RB06-001-093	TA-3-43, fourth floor, “A” wing, room A452, office, facing east.
RB06-001-094	TA-3-43, fourth floor, “B” wing, room B408, office, looking into B408A, facing east.
RB06-001-095	TA-3-43, fourth floor, “B” wing, room B408B, office, facing northeast.
RB06-001-138	TA-3-43, fourth floor, “C” wing, hallway 400E, display located to the south of the LANL Director’s Office door, “The Laboratory in a Changing World: A Los Alamos Chronology” (Los Alamos National Laboratory 2001), facing northwest.
RB06-001-139	TA-3-43, fourth floor, “C” wing, hallway 400E, display located to the south of the LANL Director’s Office door, “The Laboratory in a Changing World: A Los Alamos Chronology” (Los Alamos National Laboratory 2001), facing southwest.
RB06-001-008	TA-3-43, fourth floor, “C” wing, room C401, LANL Director’s Administrative Staff Office, facing southeast.
RB06-001-009	TA-3-43, fourth floor, “C” wing, room C401, LANL Director’s Administrative Staff Office, doorway leads into hallway 400E, facing northeast.
RB06-001-010	TA-3-43, fourth floor, “C” wing, room C401, LANL Director’s Administrative Staff Office, doorway leads into room C401B, LANL Deputy Director’s Office, facing northwest.
RB06-001-012	TA-3-43, fourth floor, “C” wing, room C401, LANL Director’s Administrative Staff Office, doorway leads into room C401A, LANL Director’s Office, facing southwest.
RB06-001-001	TA-3-43, fourth floor, “C” wing, room C401A, LANL Director’s Office, facing south.

## Index to Photographs

Technical Area (TA) 3 “South Mesa Site” (SM) continued  
Structure 43 (TA-3-43)  
Los Alamos National Laboratory (LANL)  
Los Alamos  
Los Alamos County  
New Mexico

<u>Photograph Number</u>	<u>Description</u>
RB06-001-002	TA-3-43, fourth floor, “C” wing, room C401A, LANL Director’s Office, doorway leads into room C401, LANL Director’s Administrative Staff Office, facing north.
RB06-001-004	TA-3-43, fourth floor, “C” wing, room C401B, LANL Deputy Director’s Office, facing northeast.
RB06-001-005	TA-3-43, fourth floor, “C” wing, room C401B, LANL Deputy Director’s Office, facing northwest.
RB06-001-006	TA-3-43, fourth floor, “C” wing, room C401B, LANL Deputy Director’s Office, doorway leads into room C401, LANL Director’s Administrative Staff Office, facing southwest.
RB06-001-007	TA-3-43, fourth floor, “C” wing, room C401B, LANL Deputy Director’s Office, facing southeast.
RB06-001-076	TA-3-43, fourth floor, “C” wing, room C413A, office, facing northeast.
RB06-001-077	TA-3-43, fourth floor, “C” wing, room C413B, office, facing east-northeast.
RB06-001-078	TA-3-43, fourth floor, “C” wing, room C413, office, doorway leads into room C413A, facing west.
RB06-001-075	TA-3-43, fourth floor, “D” wing, north portion of hallway 400E from south end, facing north.
RB06-001-073	TA-3-43, fourth floor, “D” wing, room D401B, office, facing west-northwest.
RB06-001-074	TA-3-43, fourth floor, “D” wing, room D402, office facing southeast.
RB06-001-066	TA-3-43, fourth floor, “D” wing, room D410, office facing south-southwest.

## Index to Photographs

Technical Area (TA) 3 “South Mesa Site” (SM) continued  
Structure 43 (TA-3-43)  
Los Alamos National Laboratory (LANL)  
Los Alamos  
Los Alamos County  
New Mexico

### Photograph

<u>Number</u>	<u>Description</u>
RB06-001-065	TA-3-43, fourth floor, “D” wing, room D411A, office, facing west.
RB06-001-067	TA-3-43, fourth floor, “D” wing, room D412, office facing northeast.
RB06-001-072	TA-3-43, fourth floor, “D” wing, room D414, office facing north-northeast.
RB06-001-134	TA-3-43, fourth floor, “D” wing, room D418, “Director’s Conference Room,” facing north.
RB06-001-135	TA-3-43, fourth floor, “D” wing, room D418, “Director’s Conference Room,” facing south.
RB06-001-136	TA-3-43, fourth floor, “D” wing, room D418, “Director’s Conference Room,” “60 <sup>th</sup> Anniversary” display panels on north wall (left to right) (Oppenheimer, Bradbury, Agnew, Kerr, Hecker, Browne), facing north.
RB06-001-137	TA-3-43, fourth floor, “D” wing, room D418, “Director’s Conference Room,” plaques and awards on north wall, facing north.  Top: Plaque presented to LANL from Firefighters and Families;  Center left: Inter-American Defense Board;  Center right: New Mexico House of Representatives, 46 <sup>th</sup> Legislature, 1 <sup>st</sup> Session 2003, Designating January 29, 2003, as “Science Benefiting New Mexico and the Nation from National Laboratories Day”.  Bottom: W80 Team to John Browne Certificate of Appreciation.
RB07-007-010	TA-3-43, fourth floor, “D” wing, room D424A (designated as room D424B on drawings), vault, from room D422, IRM offices, vault doors closed, facing northwest.



## Index to Photographs

Technical Area (TA) 3 “South Mesa Site” (SM) continued  
Structure 43 (TA-3-43)  
Los Alamos National Laboratory (LANL)  
Los Alamos  
Los Alamos County  
New Mexico

<u>Photograph Number</u>	<u>Description</u>
RB07-007-009	TA-3-43, fourth floor, “D” wing, room D424A (designated as room D424B on drawings), vault, from room D422, IRM offices, vault doors closed, facing southwest.
RB07-007-012	TA-3-43, fourth floor, “D” wing, room D424A (designated as room D424B on drawings), vault, from room D422, IRM offices, vault doors closed, facing west.
RB07-007-007	TA-3-43, fourth floor, “D” wing, room D424A (designated as room D424B on drawings), vault, from room D422, IRM offices, vault doors open, facing north-northwest.
RB07-007-008	TA-3-43, fourth floor, “D” wing, room D424A (designated as room D424B on drawings), vault, from room D422, IRM offices, vault doors open, facing southwest.
RB07-007-005	TA-3-43, fourth floor, “D” wing, room D424A (designated as room D424B on drawings), vault, inner vault door closed, looking out into room D422, facing east.
RB07-007-006	TA-3-43, fourth floor, “D” wing, room D424A (designated as room D424B on drawings), vault, facing northwest.
RB07-007-004	TA-3-43, fourth floor, “D” wing, room D424A (designated as room D424B on drawings), inner vault door to room D424B (designated as room D424C on drawings) closed, facing north.
RB07-007-001	TA-3-43, fourth floor, “D” wing, room D424B, inner vault and work room (designated as room D424C on drawings), facing north.
RB07-007-002	TA-3-43, fourth floor, “D” wing, room D424B, inner vault and work room (designated as room D424C on drawings), facing south.
RB06-001-081	TA-3-43, fourth floor, “D” wing, room D440, office, facing east.

## Index to Photographs

Technical Area (TA) 3 “South Mesa Site” (SM) continued  
Structure 43 (TA-3-43)  
Los Alamos National Laboratory (LANL)  
Los Alamos  
Los Alamos County  
New Mexico

### Photograph

#### Number

#### Description

RB06-001-080	TA-3-43, fourth floor, “D” wing, room D441, office, facing west.
RB06-001-083	TA-3-43, fourth floor, “D” wing, room D442, doorway leads into D442A, office, facing northeast.
RB06-001-082	TA-3-43, fourth floor, “D” wing, room D442A, office, facing north.
RB06-001-084	TA-3-43, fourth floor, “D” wing, room D446, office, facing east.

Penthouses #1 and #2 are on the 4<sup>th</sup> floor roofs of wings A & C, respectively, whereas Penthouse #3 is on the 2<sup>nd</sup> floor roof of the “crossbar” of the H-shaped building. The observation room is located on the roof of Penthouse #2.

RB06-001-030	TA-3-43, “A” wing, room A501, Penthouse #1, facing south.
RB06-001-031	TA-3-43, “A” wing, room A501, Penthouse #1, facing northeast.
RB06-001-025	TA-3-43, “C” wing, room C503, Penthouse #2, facing northeast.
RB06-001-026	TA-3-43, “C” wing, room C503, Penthouse #2, facing southeast.
RB06-001-027	TA-3-43, “B” wing, room B314, Penthouse #3, facing north.
RB06-001-028	TA-3-43, “B” wing, room B314, Penthouse #3, facing southeast.
RB06-001-029	TA-3-43, “B” wing, room B314, Penthouse #3, facing east.
RB06-001-050	TA-3-43, “C” wing, room C601, Observatory room, facing west-southwest.
RB06-001-051	TA-3-43, “C” wing, room C601, Observatory room, facing southwest.
RB06-001-052	TA-3-43, “C” wing, room C601, Observatory room, facing northeast.





































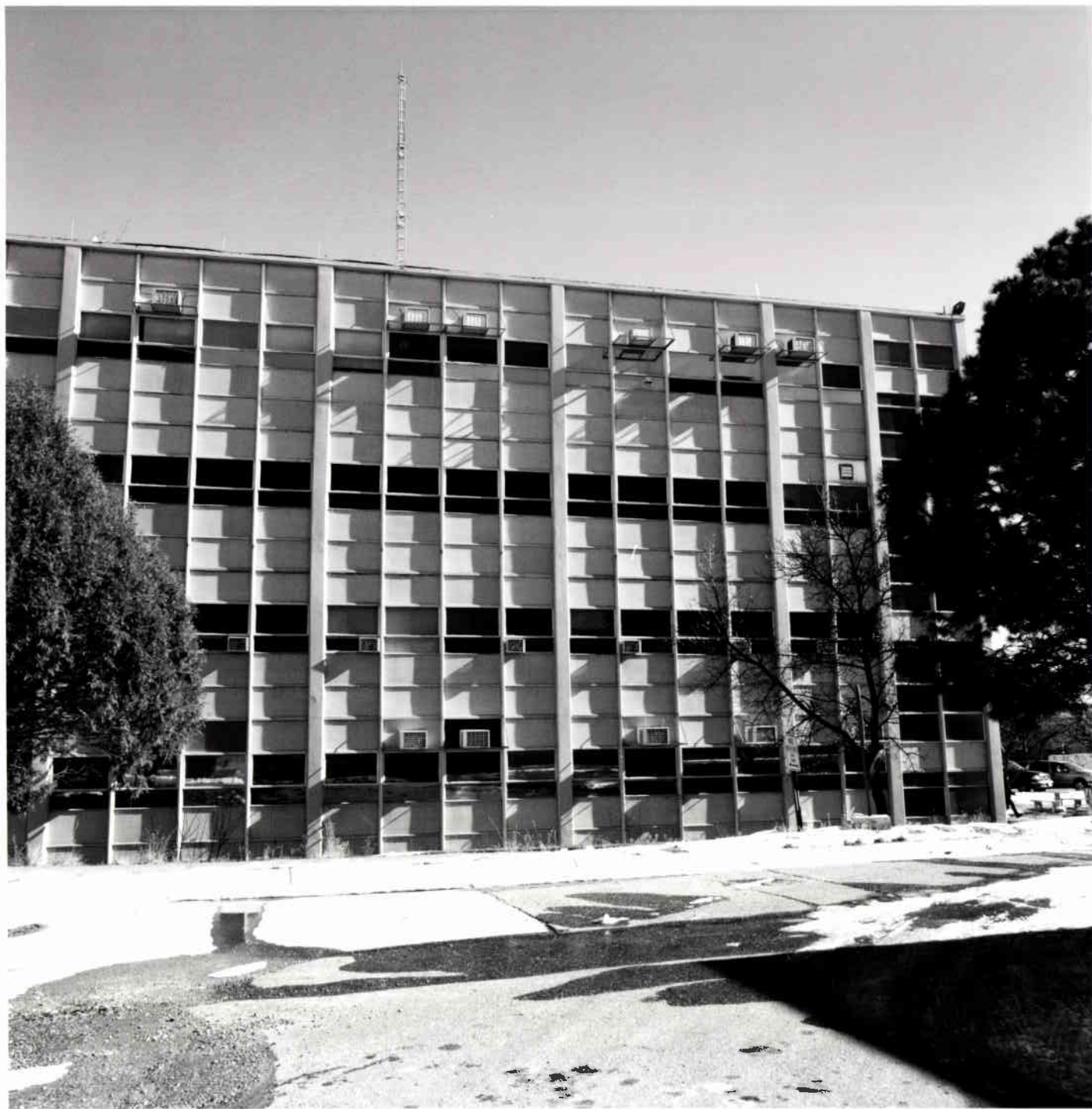














































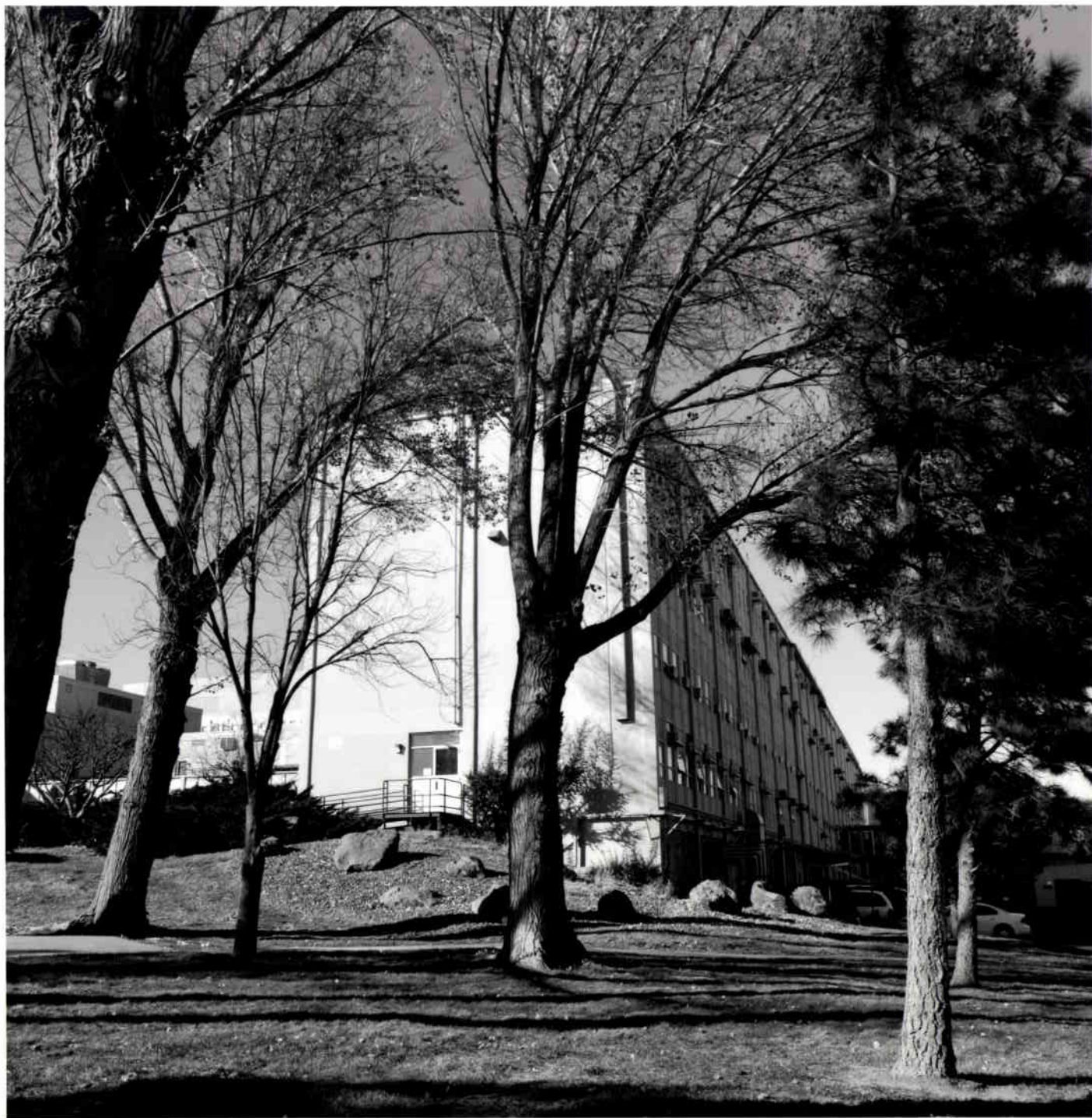






























































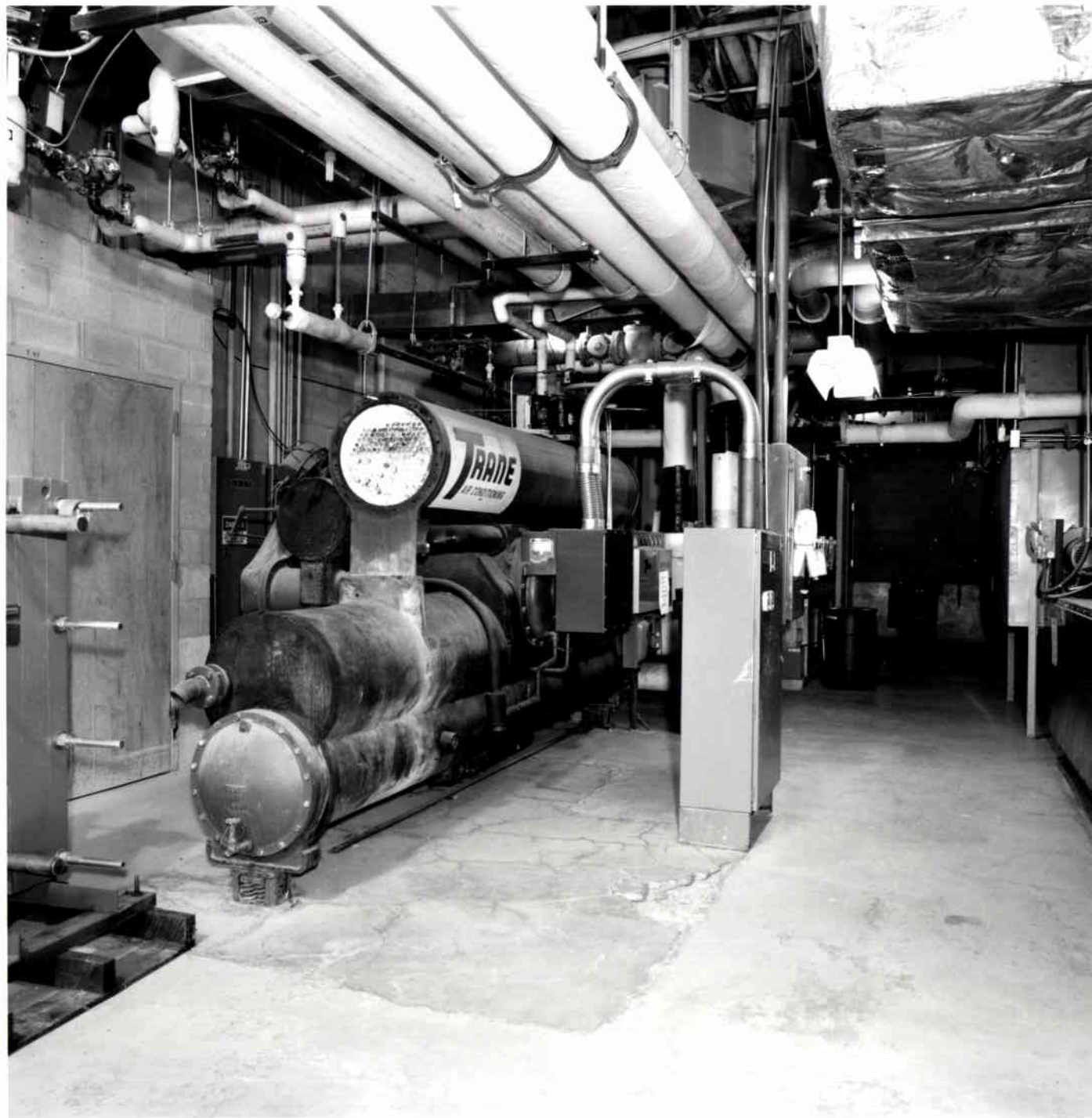




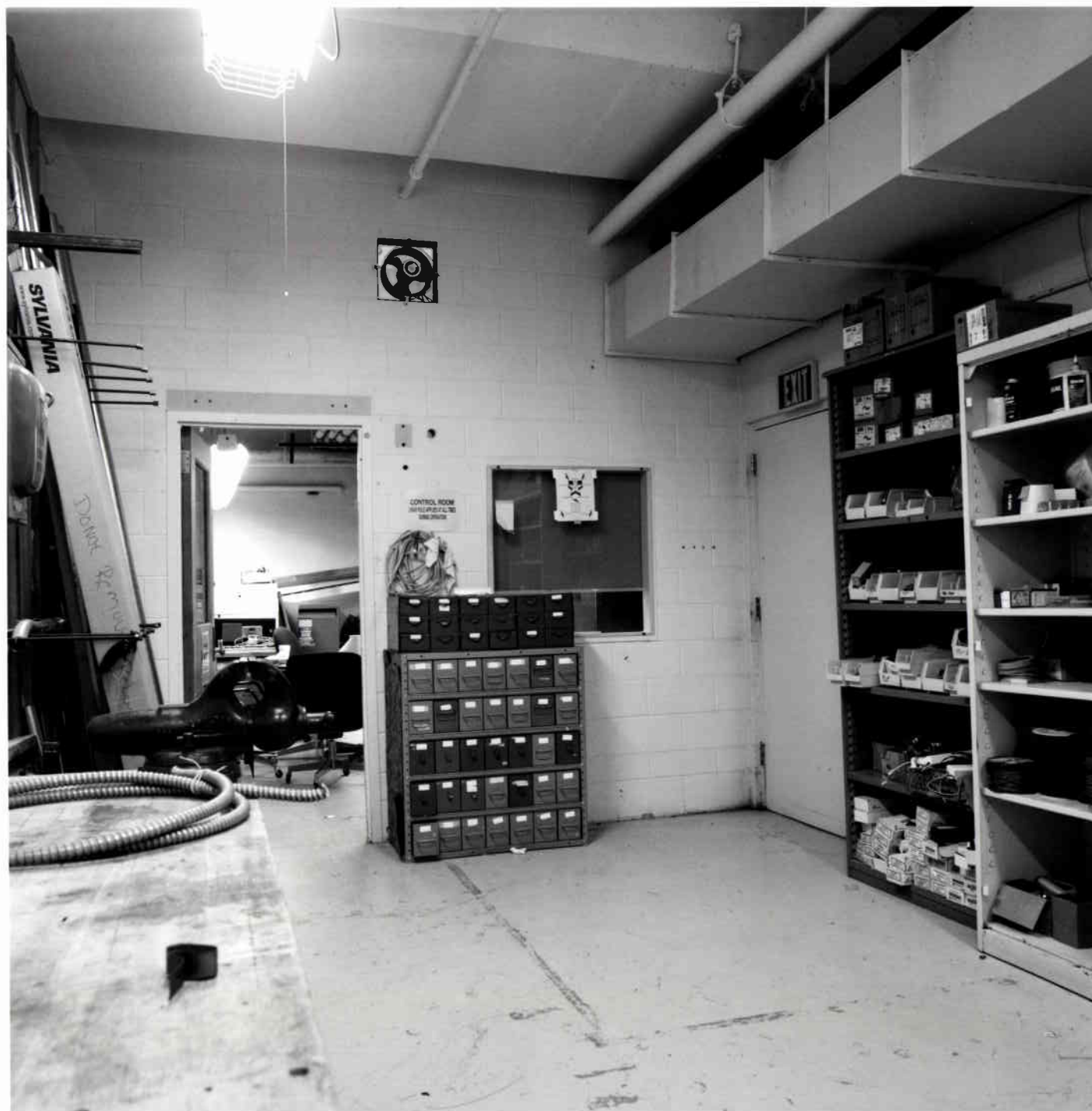




































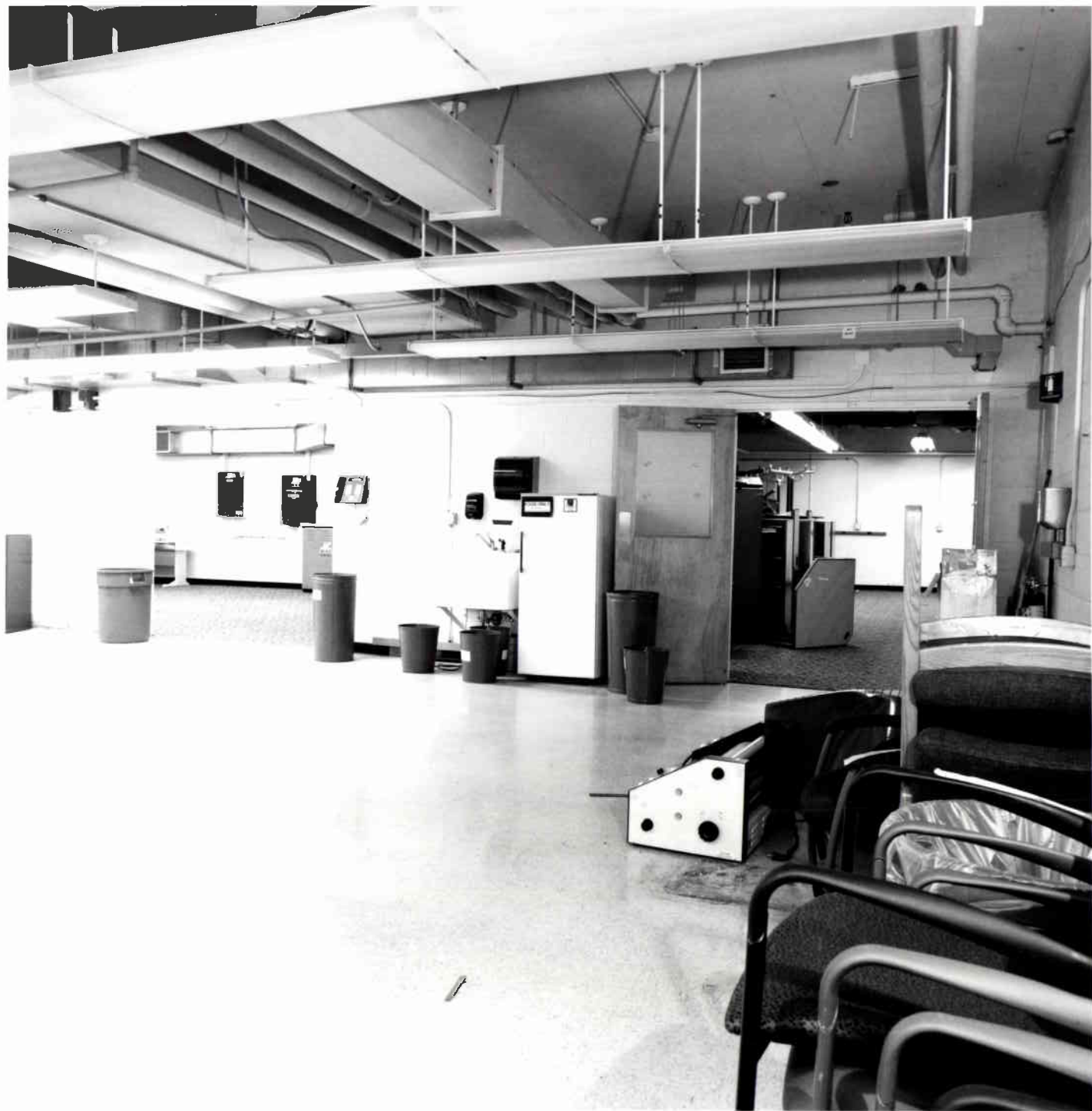
































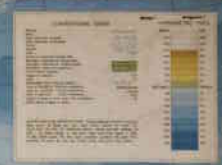




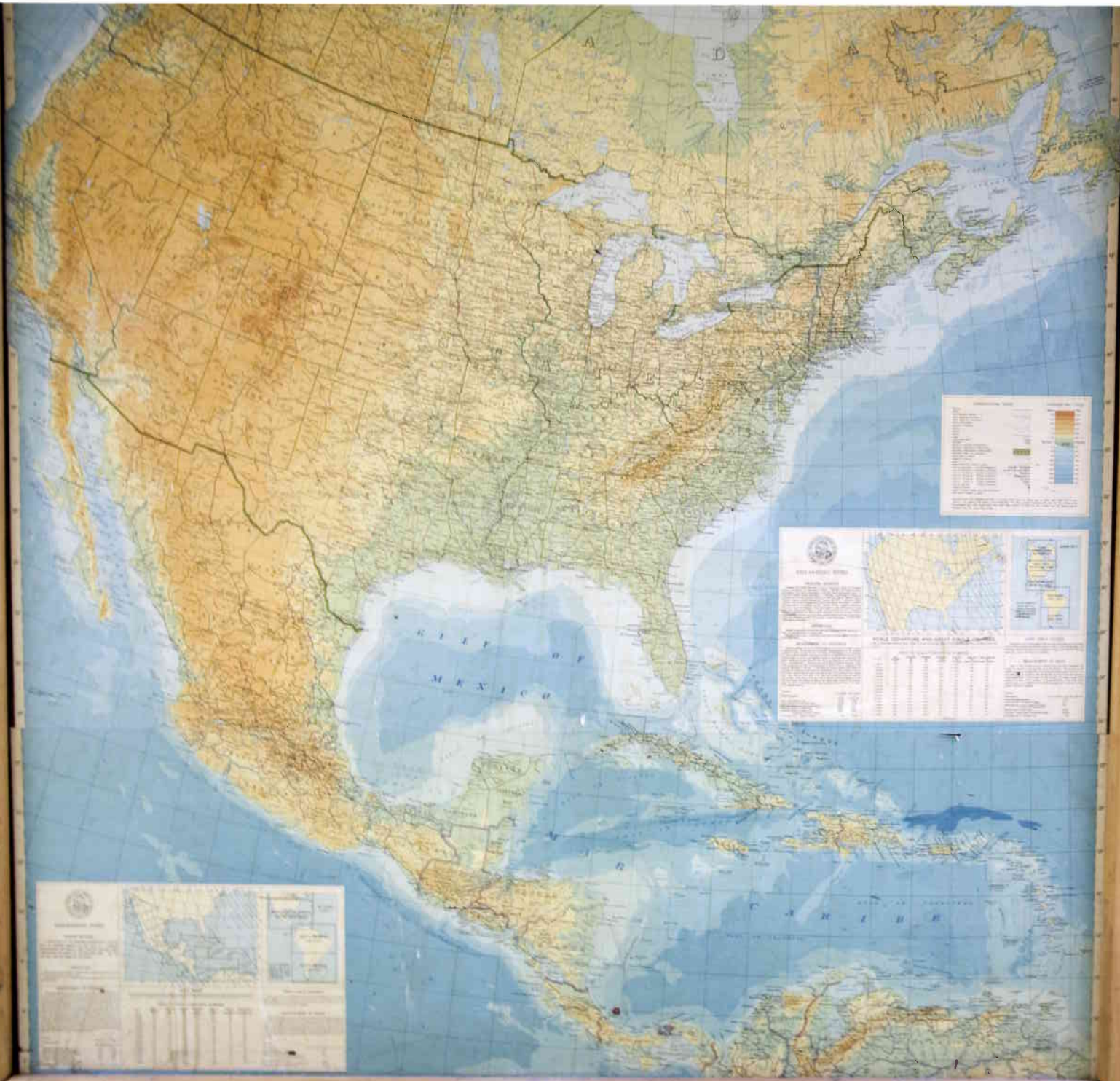


Table with multiple columns and rows, likely a list of geographical features or data. The title is "ALASKA PENINSULA AND ALEUTIAN ISLANDS".

NAME	COORDINATES	REMARKS
...	...	...

















**B** STAIR NO. 7  
TOP FLOOR B  
FLOOR BOTTOM FLOOR SB  
EXIT DISCHARGE/THIS FLOOR













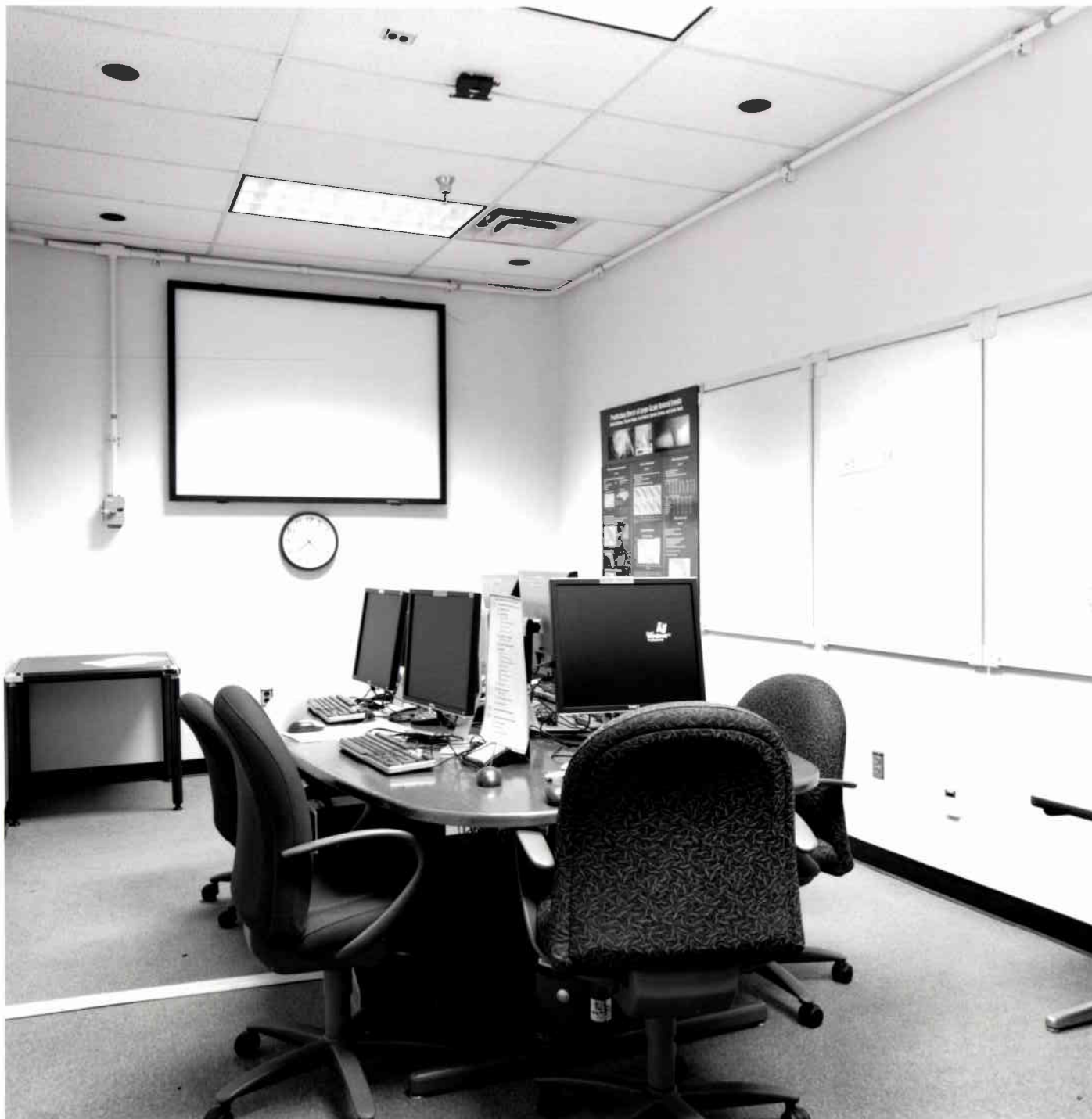
















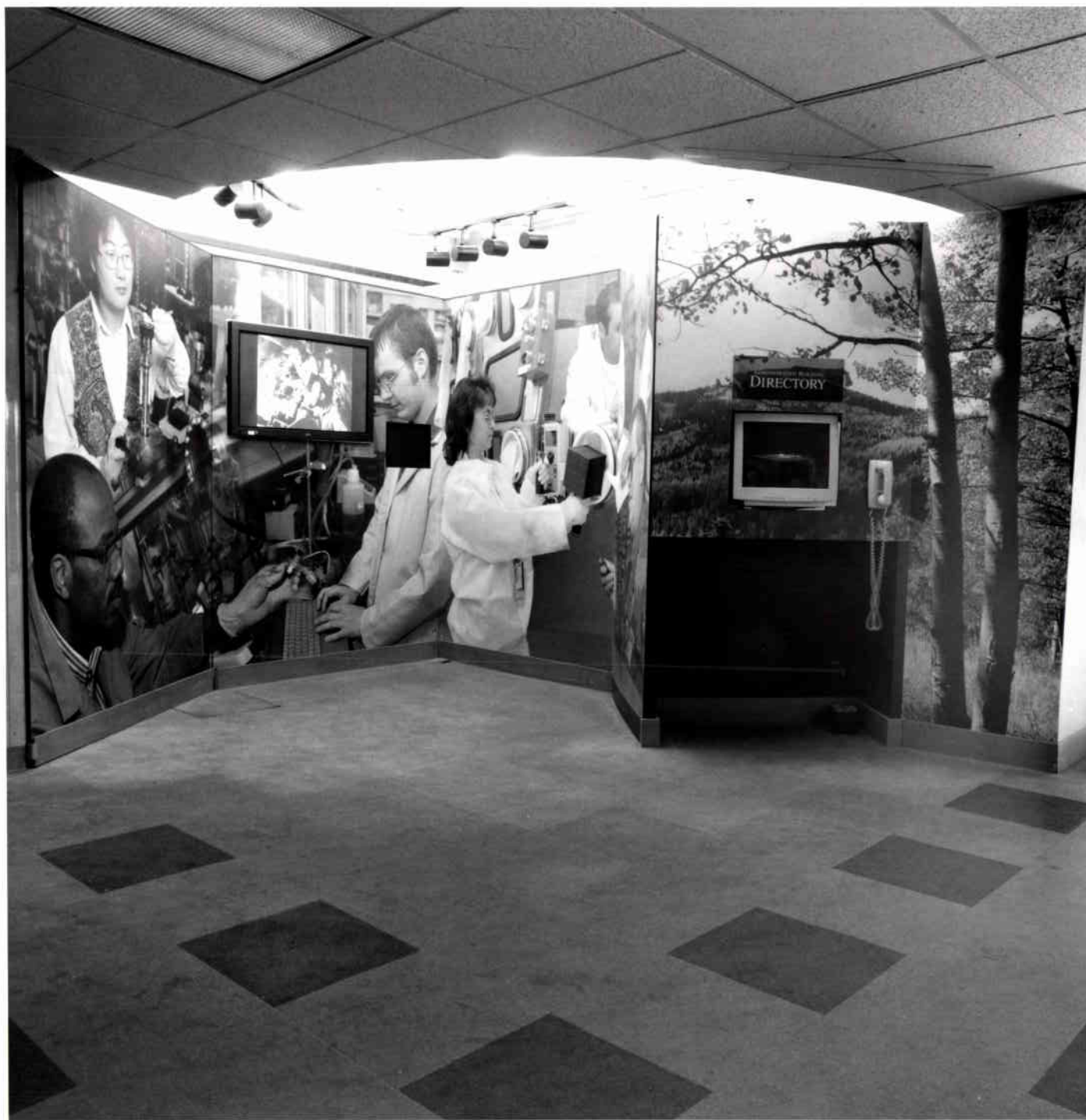




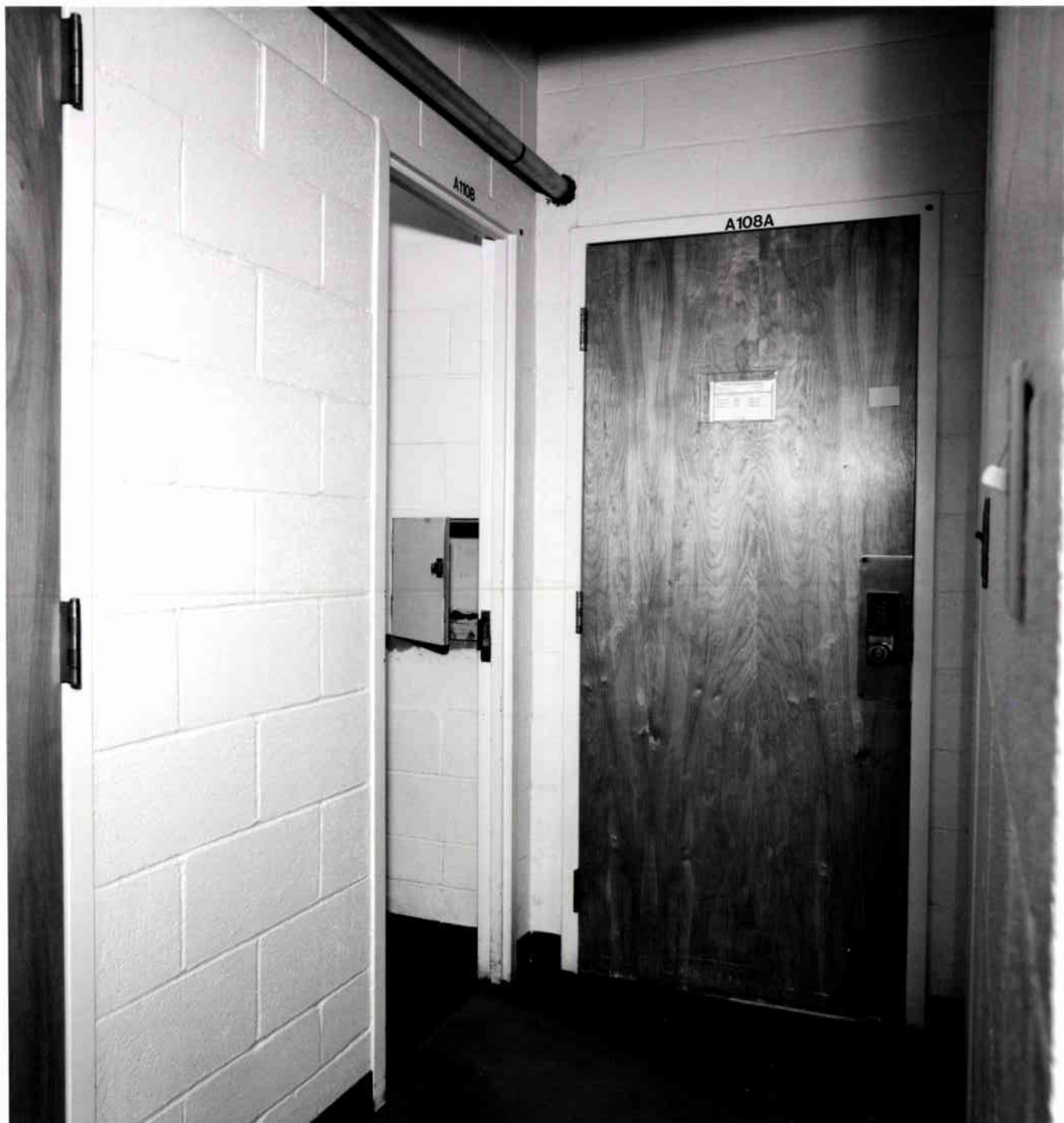




































CLOSED MEETING  
TO ALLOW DISCUSSION  
TRANSFER

LOS ALAMOS  
NATIONAL LABORATORY



NISA









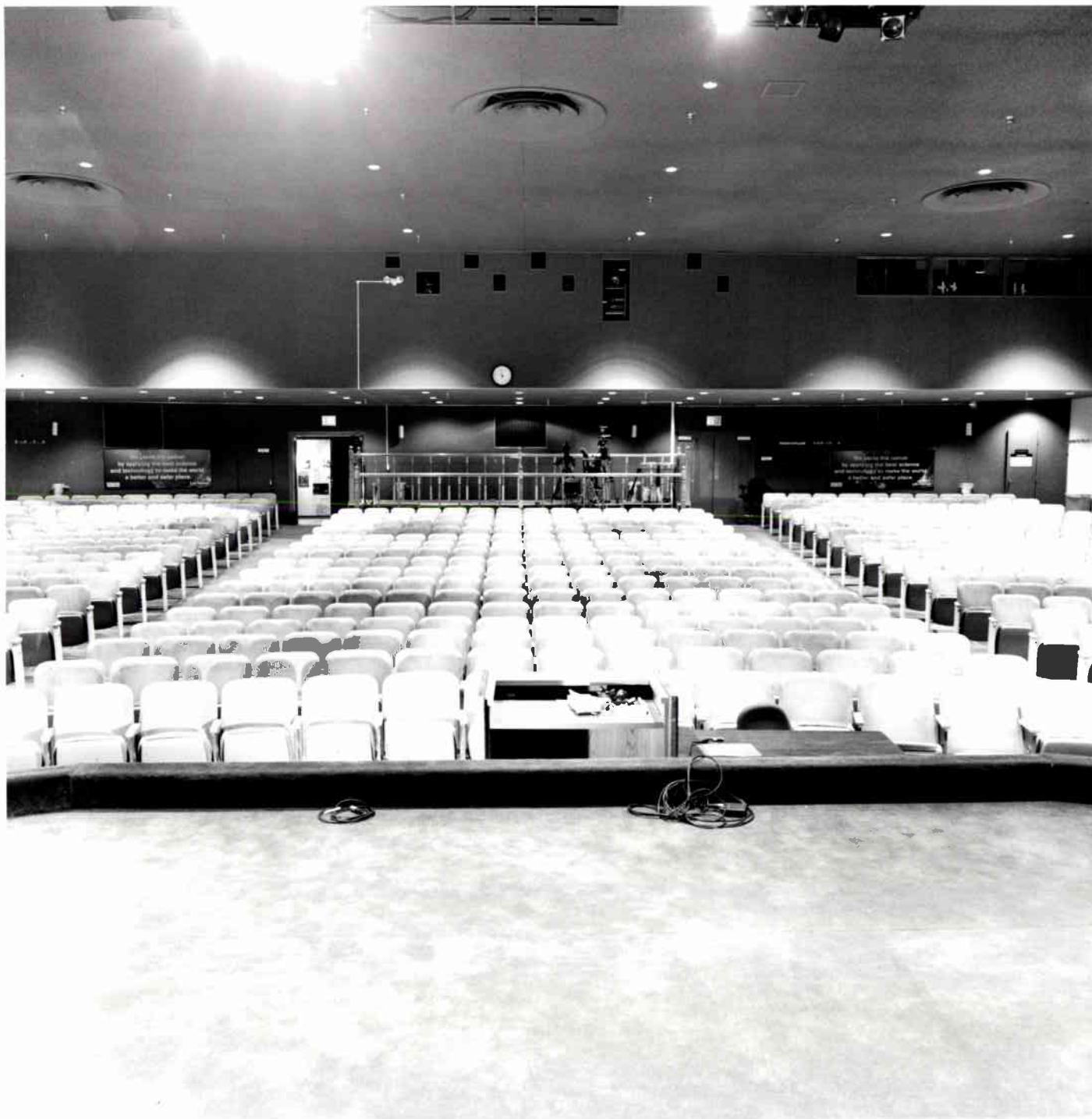








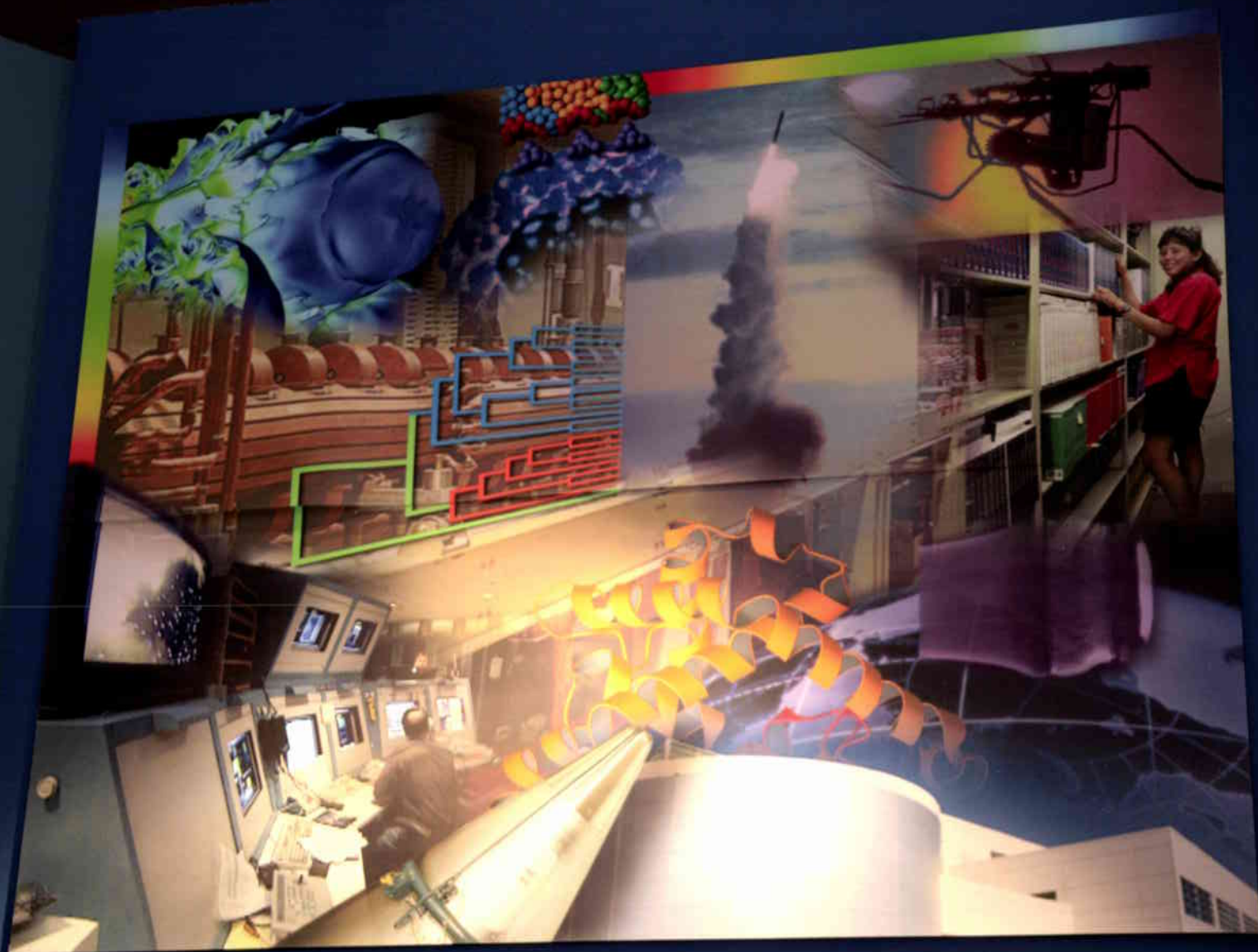










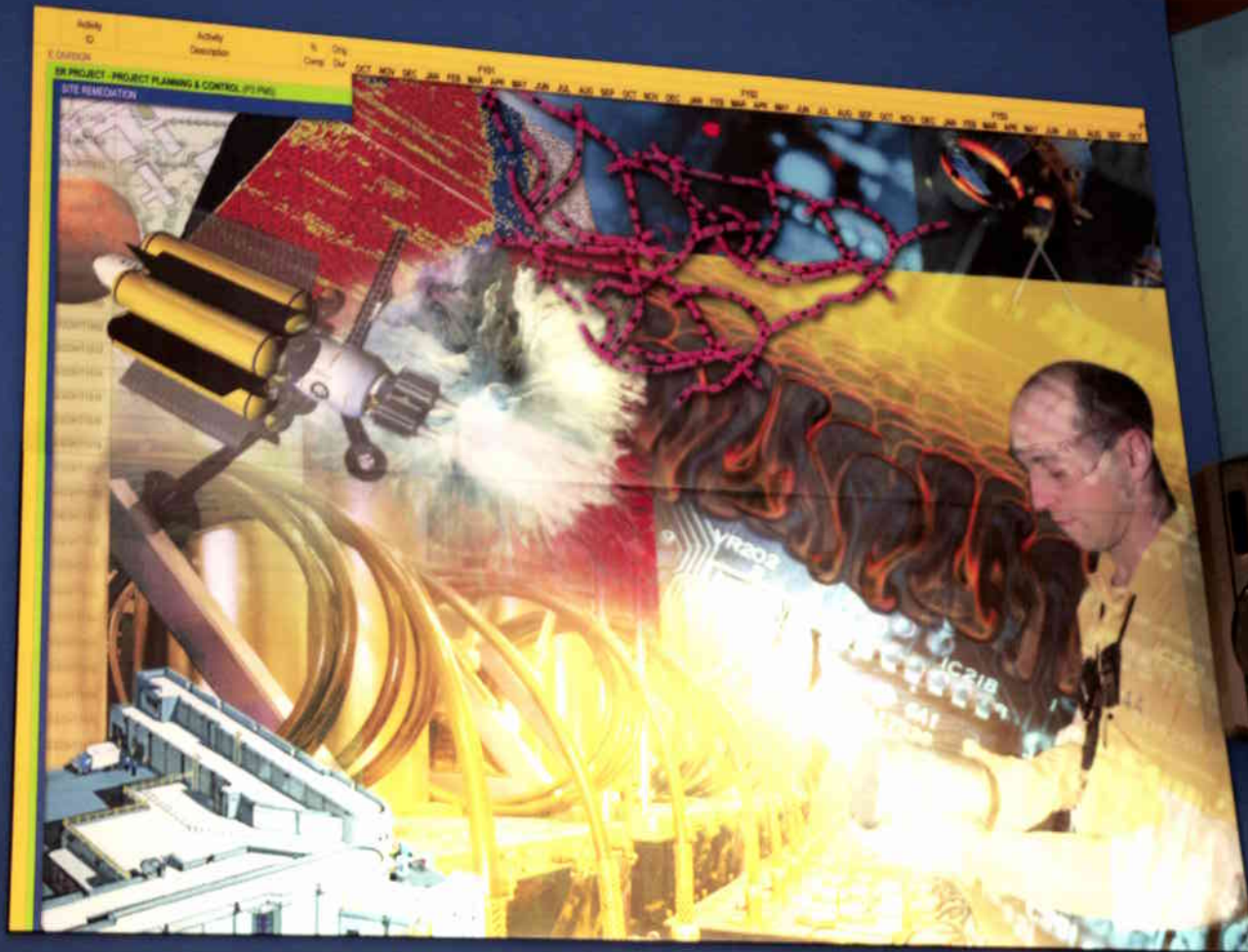


EXIT









EXIT



















## ENERGY AND TECHNOLOGY

### *Environmental Control to Arms Control*

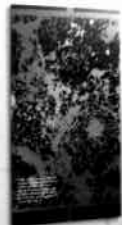
Los Alamos National Laboratory dedicates a widely varied effort to developing safe, reliable technologies to meet three major national concerns—an adequate supply of energy, stewardship of the environment, and arms control/safeguards. Our programs range from biological solutions for environmental cleanup to enhancing the recovery of domestic oil, from assuring the safety of nuclear reactors to verifying compliance with arms control treaties. These programs complement our national security mission by supporting our defense work and by contributing technology that helps ensure U.S. energy security.



#### ENERGY

*Advancing Solutions for America*

Our mission is to develop safe, reliable technologies to meet three major national concerns—an adequate supply of energy, stewardship of the environment, and arms control/safeguards. Our programs range from biological solutions for environmental cleanup to enhancing the recovery of domestic oil, from assuring the safety of nuclear reactors to verifying compliance with arms control treaties. These programs complement our national security mission by supporting our defense work and by contributing technology that helps ensure U.S. energy security.





## BASIC RESEARCH

*"The world's greatest achievements begin with an inquisitive mind"*

World-class basic and applied research provides the technical base for removing a dynamic, fast-moving science and engineering initiatives. Matching the best minds in science and engineering with technical problems has made us an innovative institution for discovery and continues to strengthen our scientific vitality. Encompassing the varied disciplines of life sciences, medicine and high-energy physics, computing, nuclear physics, theory, medicine studies and research scanning, our programs reach across the Laboratory to help meet local, state, national, and international goals.

## BASIC RESEARCH

*"The world's greatest achievements begin with an inquisitive mind."*

World-class basic and applied research provides the technical base for remaining a dynamic, first-rate science and engineering institution. Matching the best minds in science and engineering with technical problems has made us an innovative institution for decades and continues to strengthen our scientific vitality. Encompassing the varied disciplines of life sciences, medium- and high-energy physics, computing, nuclear physics, theory, nonlinear studies and neutron scattering, our programs reach across the Laboratory to help meet local, state, national, and international goals.







3122	1991	2258	2098	1510	1
3613	2968	2483	2704	2345	
3372	2970				
2859	26				
2652	3				
2700					
3282					
2717					
2420					
2397					
2309					
2324					
2046					
2012					
2203					
1914					
1228					
931					
823					
482					
453					
428					
323					
310					







## NUCLEAR WEAPONS TECHNOLOGY

The Nuclear Weapons Technology program at Los Alamos is one of the most advanced in the world, facing our nation's most complex challenges. A broad-based research and development activity, it supports a national defense policy founded on nuclear deterrence that has made a major contribution to over forty years of stability. Our research-to-retirement stewardship of nuclear weapons draws on capabilities in designing, developing, and testing nuclear devices, nuclear materials research and development, and stockpile management and retirement. Programs in nuclear directed-energy weapons and inertial confinement fusion place the Laboratory at the leading edge of advanced technology. These contributions to the solution of defense-related problems help to make the Laboratory a principal force in our nation's quest for national security and world peace.











**DEFENSE RESEARCH  
AND APPLICATIONS**

**AND APPLICATIONS**  
*Undersea, on the Ground, and in Space*

Norman nuclear defense draws on the technology base developed in support of the Nuclear Weapons Programs. In the field of conventional and advanced conventional technology, our program has achieved significant advances in armor, anti-air defense, and missile defense. In support of the Strategic Defense Initiative, we are investigating the use of the laser beam and the free-electron laser, systems that may enable directed energy weapons for operation in space or in the earth's atmosphere. Progress in nuclear defense draw on the extensive interdisciplinary skills of the Laboratory, bringing together our leaders from many fields, including physics, chemistry, materials science, computational science, and engineering.













## SCIENCE AFFILIANCE

EMBRACING THE INCREASING COMPLEXITY OF  
LARGE-SCALE CLUSTER COMPUTERS

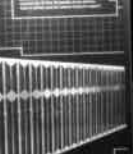
Advanced cluster computing systems are currently being deployed for a wide range of scientific and engineering applications. These systems are designed to handle large-scale data sets and complex simulations, providing a powerful tool for researchers in various fields.

The Science Affiliation program is a key component of the Los Alamos National Laboratory's efforts to advance the state-of-the-art in cluster computing. This program provides a platform for researchers to collaborate and share their expertise in this rapidly evolving field.

The Science Affiliation program is a key component of the Los Alamos National Laboratory's efforts to advance the state-of-the-art in cluster computing. This program provides a platform for researchers to collaborate and share their expertise in this rapidly evolving field.

The Science Affiliation program is a key component of the Los Alamos National Laboratory's efforts to advance the state-of-the-art in cluster computing. This program provides a platform for researchers to collaborate and share their expertise in this rapidly evolving field.

The Science Affiliation program is a key component of the Los Alamos National Laboratory's efforts to advance the state-of-the-art in cluster computing. This program provides a platform for researchers to collaborate and share their expertise in this rapidly evolving field.



## URBAN INFRASTRUCTURE SIMULATION

Urban infrastructure simulation is a complex task that requires the integration of various data sources and modeling techniques. This simulation allows researchers to predict the behavior of urban systems under different conditions, providing valuable insights for urban planning and management.

Urban infrastructure simulation is a complex task that requires the integration of various data sources and modeling techniques. This simulation allows researchers to predict the behavior of urban systems under different conditions, providing valuable insights for urban planning and management.

Urban infrastructure simulation is a complex task that requires the integration of various data sources and modeling techniques. This simulation allows researchers to predict the behavior of urban systems under different conditions, providing valuable insights for urban planning and management.

## INSTITUTIONAL COMPUTING AT LOS ALAMOS

Institutional computing at Los Alamos involves the development and deployment of large-scale computing systems for institutional use. This system is designed to handle a wide range of institutional data and applications, providing a powerful tool for institutional management and research.

Institutional computing at Los Alamos involves the development and deployment of large-scale computing systems for institutional use. This system is designed to handle a wide range of institutional data and applications, providing a powerful tool for institutional management and research.

Institutional computing at Los Alamos involves the development and deployment of large-scale computing systems for institutional use. This system is designed to handle a wide range of institutional data and applications, providing a powerful tool for institutional management and research.





































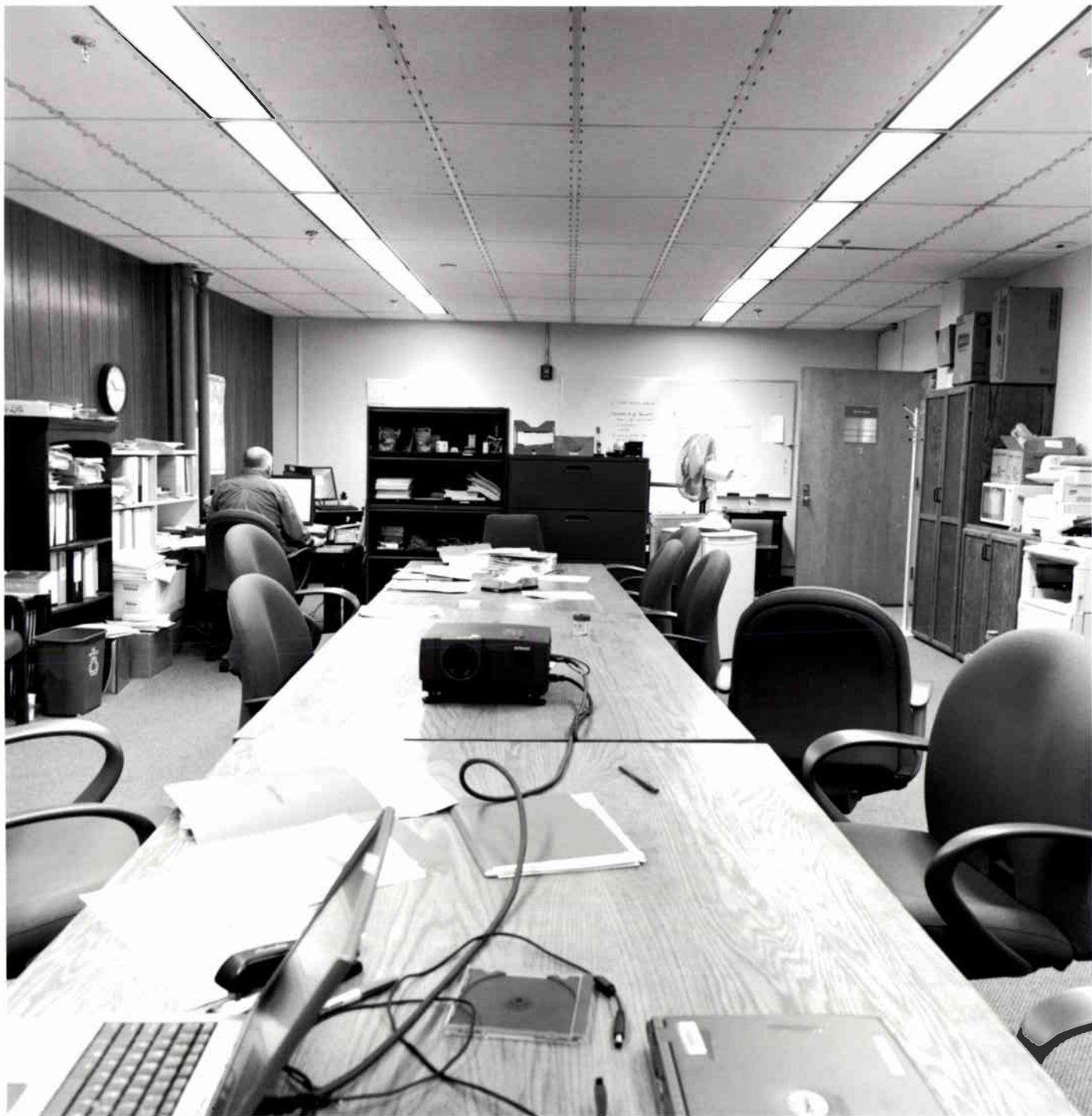


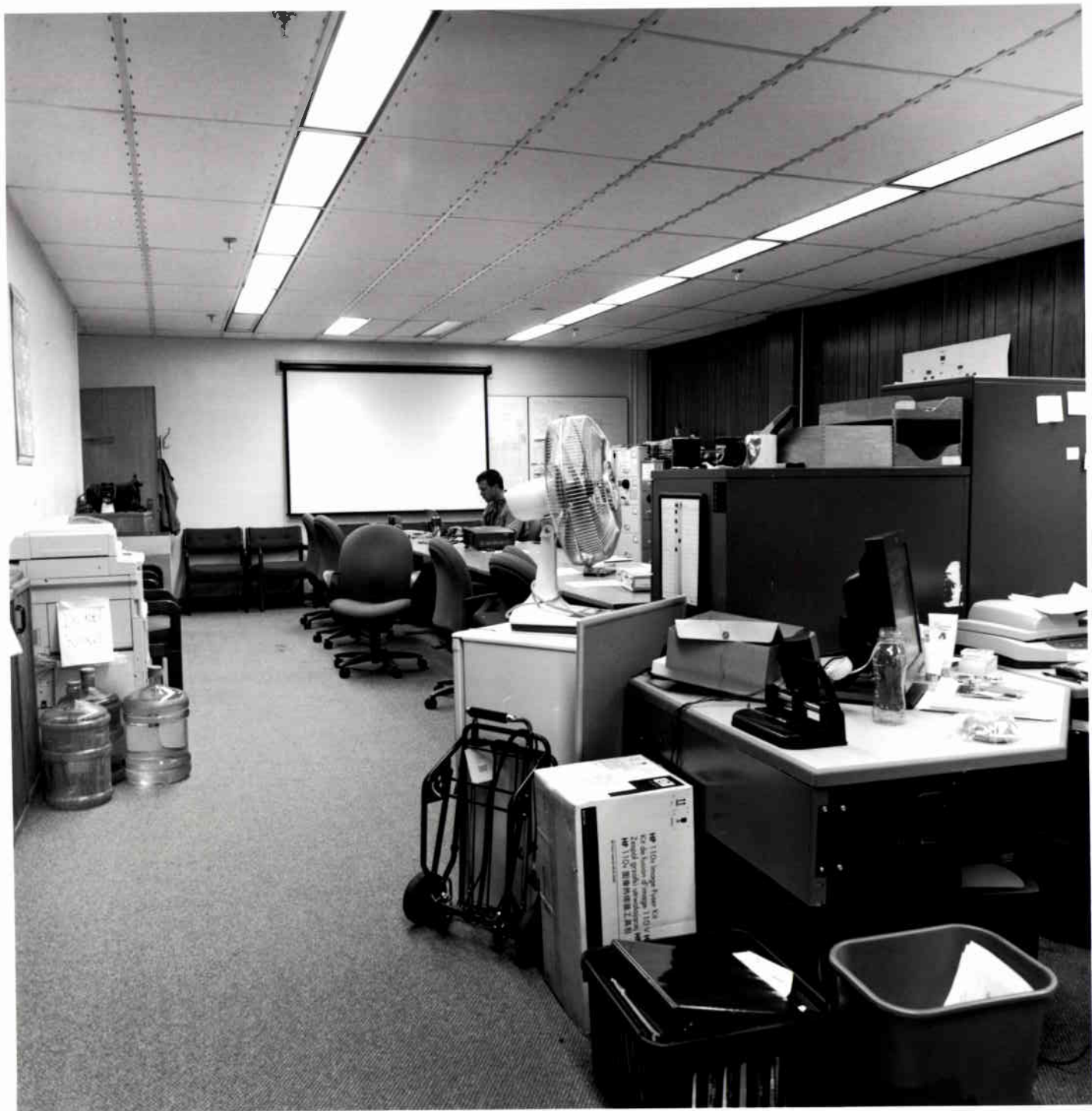
























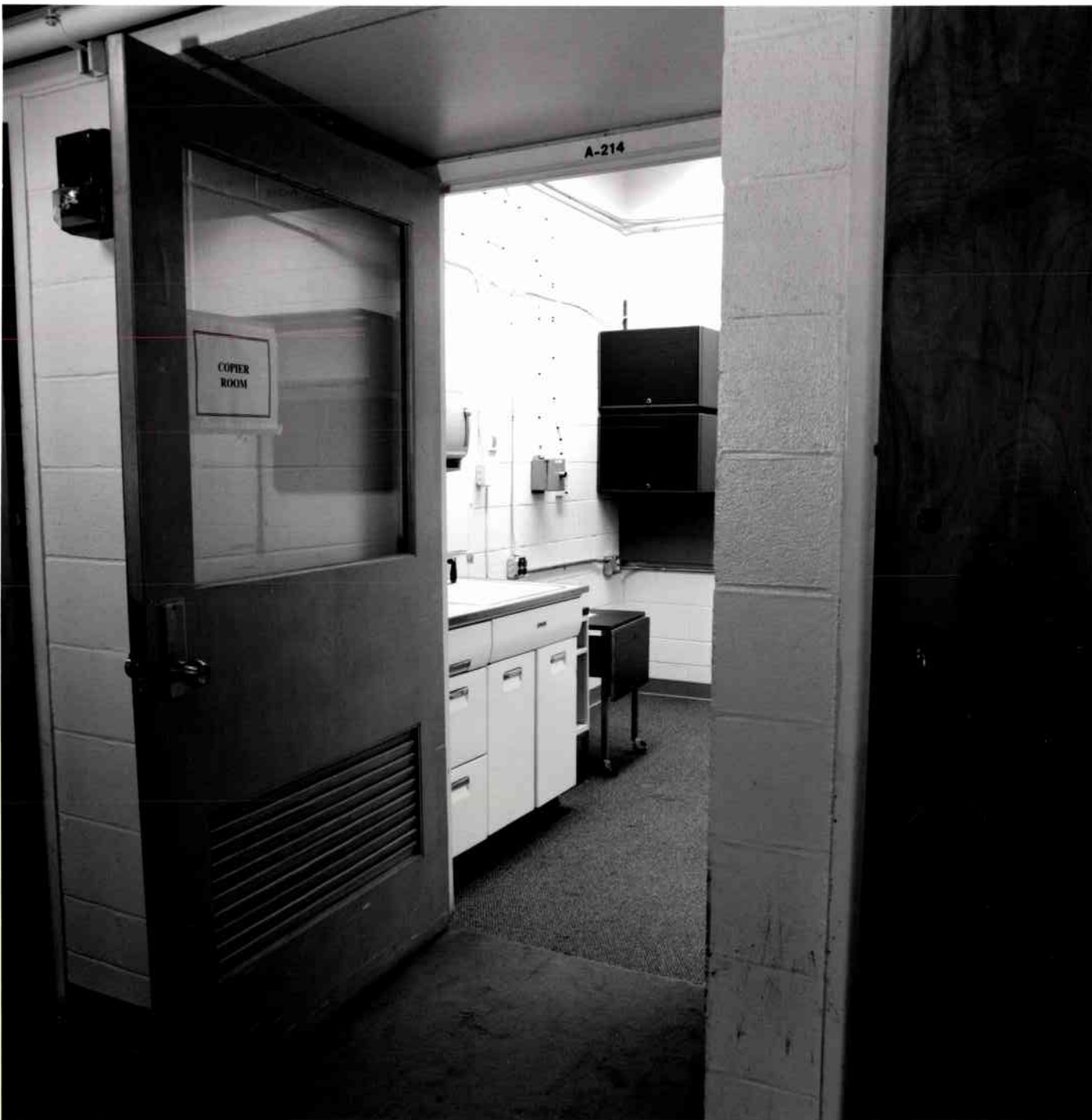


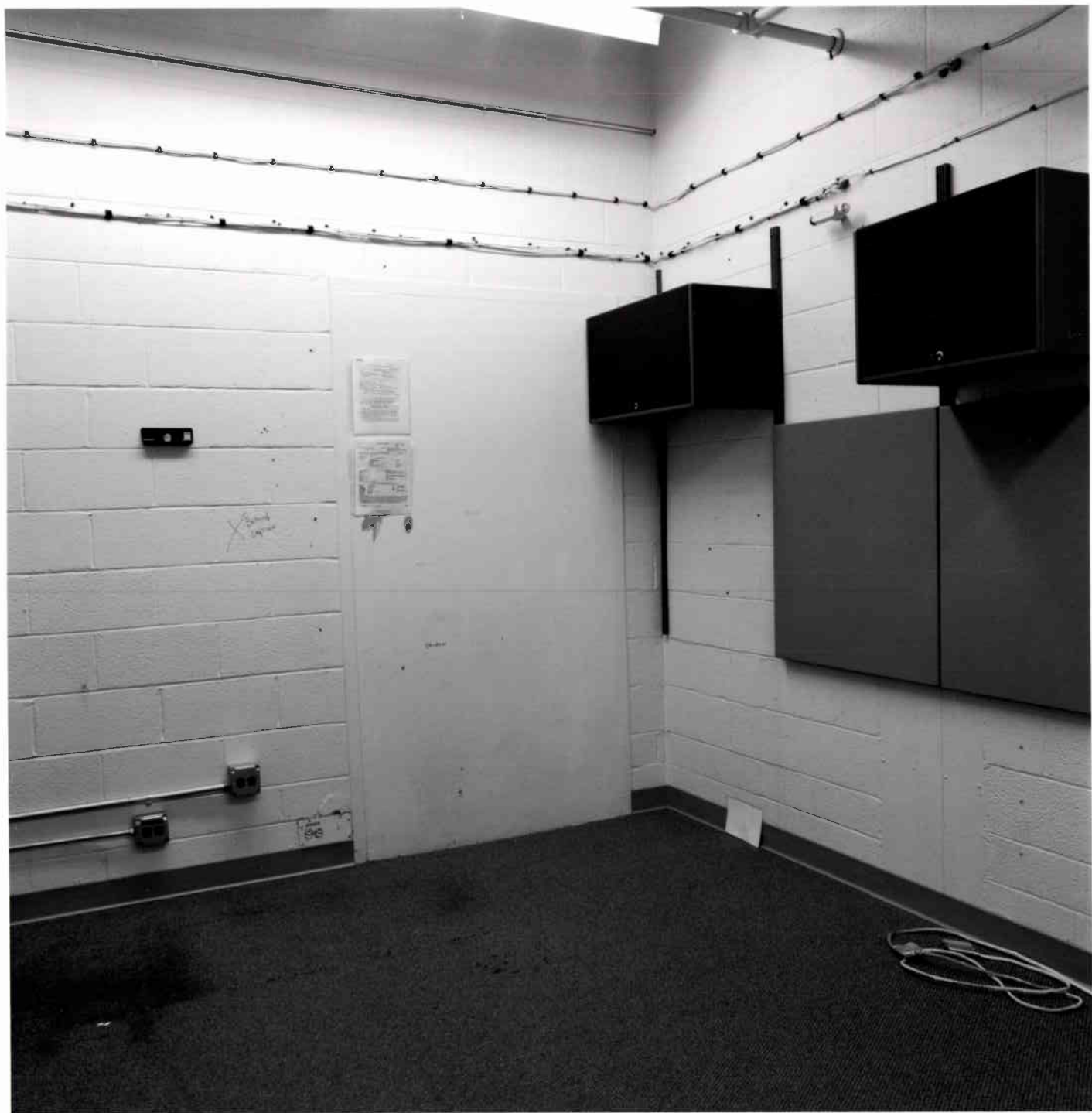




















































































































David L. Freeman  
J. Douglas Leader  
1941 - 1997



William E. Ogle  
J. Douglas Leader  
1903 - 1972



John C. Hopkins  
J. Douglas Leader  
1914 - 1992



Alvin C. Graves  
J. Douglas Leader  
1908 - 1987



Charles L. Browne  
J. Douglas Leader  
1912 - 1994



**PARK ISLAND**  
**CONTINUOUS SHOWS**  
Decisions governing your immediate future on request

*Featuring*

Merry-go-round  
House of mazes  
Ogle the SWAMI  
DISAPPEARING YAGS

**WEATHER FORECASTING**  
The funniest show of the year

**SEE THE PEOPLE**  
NEW MEMBERS

*Ride*  
the M BOATS  
SEE THE WHIRLYBIRDS  
WALL BUDY HUNTING  
STOCK JEEP RACING  
Flexible time Spoken here!





**T. T. Scolman**  
 Deputy Associate Director Test Operations  
 (formerly J-Division - 1982-1988)  
 J-Division Leader 1988-1988



**Jay H. Norman**  
 J-Division Leader  
 1988 - 1994



**Joint Verification Experiment - Participants - USA/USSR, 1988**  
 BACK ROW (left to right): James Kowalsky, IT-DO, Steve Kente, DOW/Washington,  
 Don Collins, J-3, Barry Butler, J-4, Dale Engstrom, J-4, Tom McKown, P-15, Richard Kowach, J6/NTS.  
 SEATED (left to right): Keith Abick, P-15, Don Elmer, P-15, Walt Wolff, J-DO, Roger Hill, P-15.  
 Not present at the Award Ceremony were Rob Sharp, IT-DO and Tom Warner, ESS-3.







# PARRY ISLAND AMUSEMENT PARK

## CONTINUOUS SHOWS

Decisions governing your immediate future on request

*Featuring*

Merry-go-round  
House of mazes  
Ogle the SWAMI  
DISAPPEARING  
YAGS

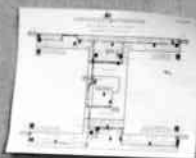
**WEATHER FORECASTING**

*The funniest show of the year*

see  
THE PEOPLE  
*that need no sleep*  
CAPTURED  
*in the mountains*  
NEW MEXICO

*Ride*  
the M BOATS

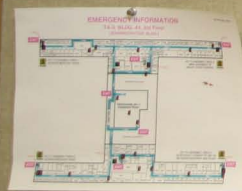
SEE THE  
WHIRLYBIRDS  
*Wild* BUOY HUNTING  
STOCK JEEP  
RACING  
*Flexible time*  
Spoken here!



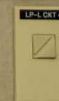
**Los Alamos  
National Laboratory**







# Los Alamos National Laboratory







CLASSIFICATION  
LEVEL IS  
SECRET/NSI



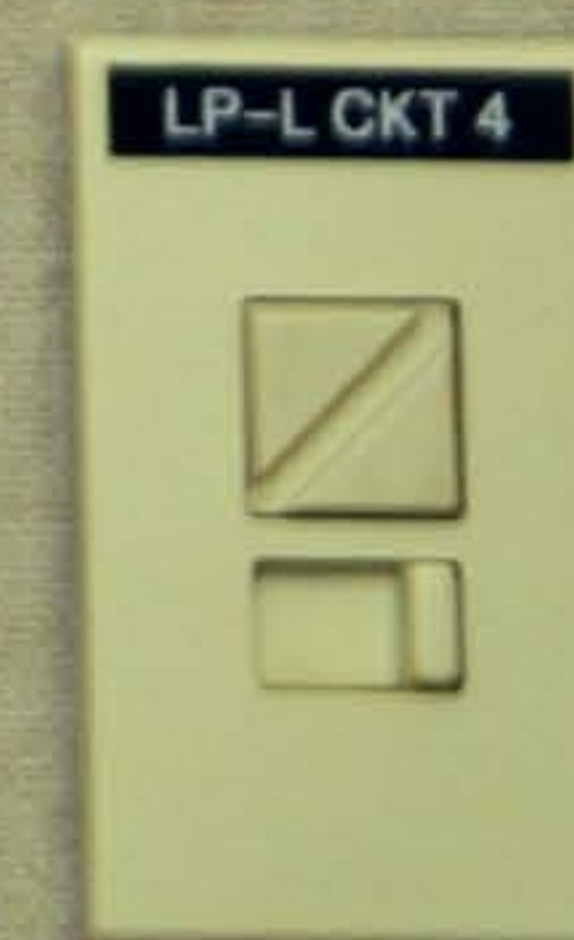




**Occupant Load**

**Max 33**

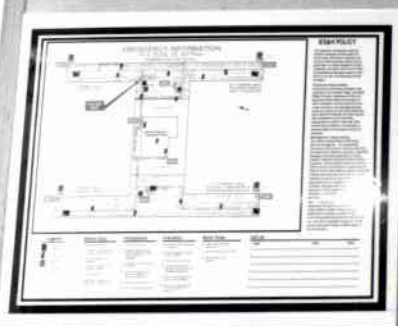
Do Not Block Aisles or Exits







Unauthorized Personnel are not  
allowed to enter the hallway  
of this building due to the  
presence of classified items  
in various offices.

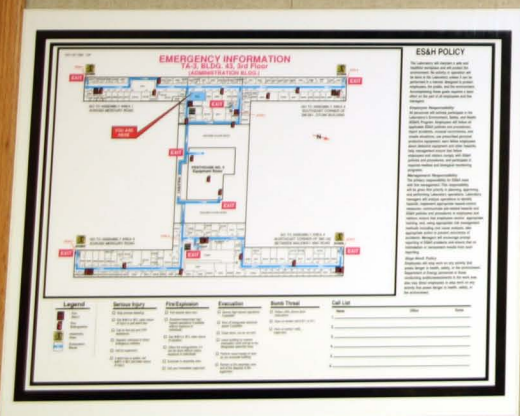






**Uncleared Personnel are not allowed to linger in hallways of this building due to the processing of classified matter in various offices.**

Uncleared personnel should be escorted directly in and out of this building.

































UNCLASSIFIED

**Trinity Device**

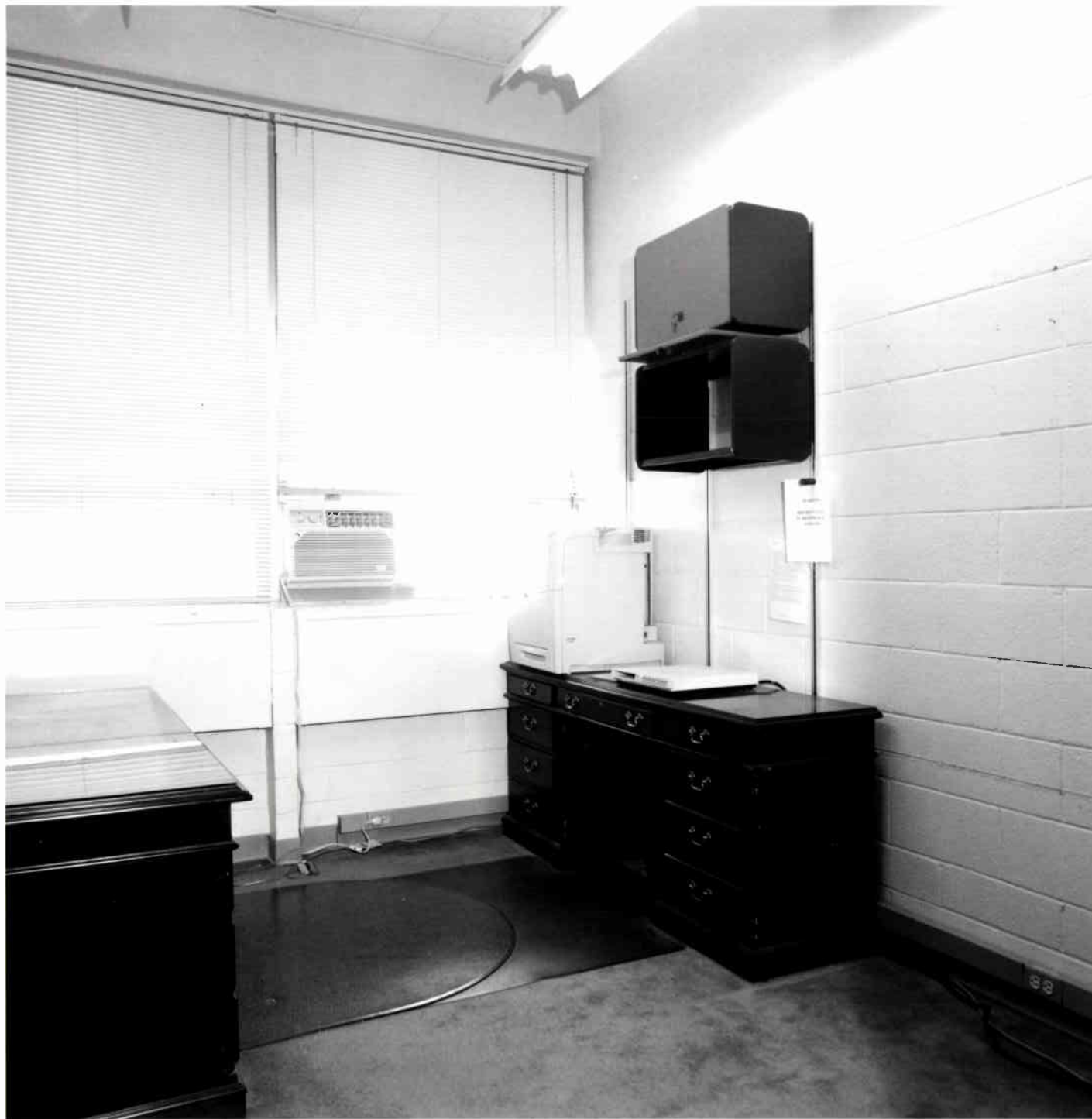
175 lbs.

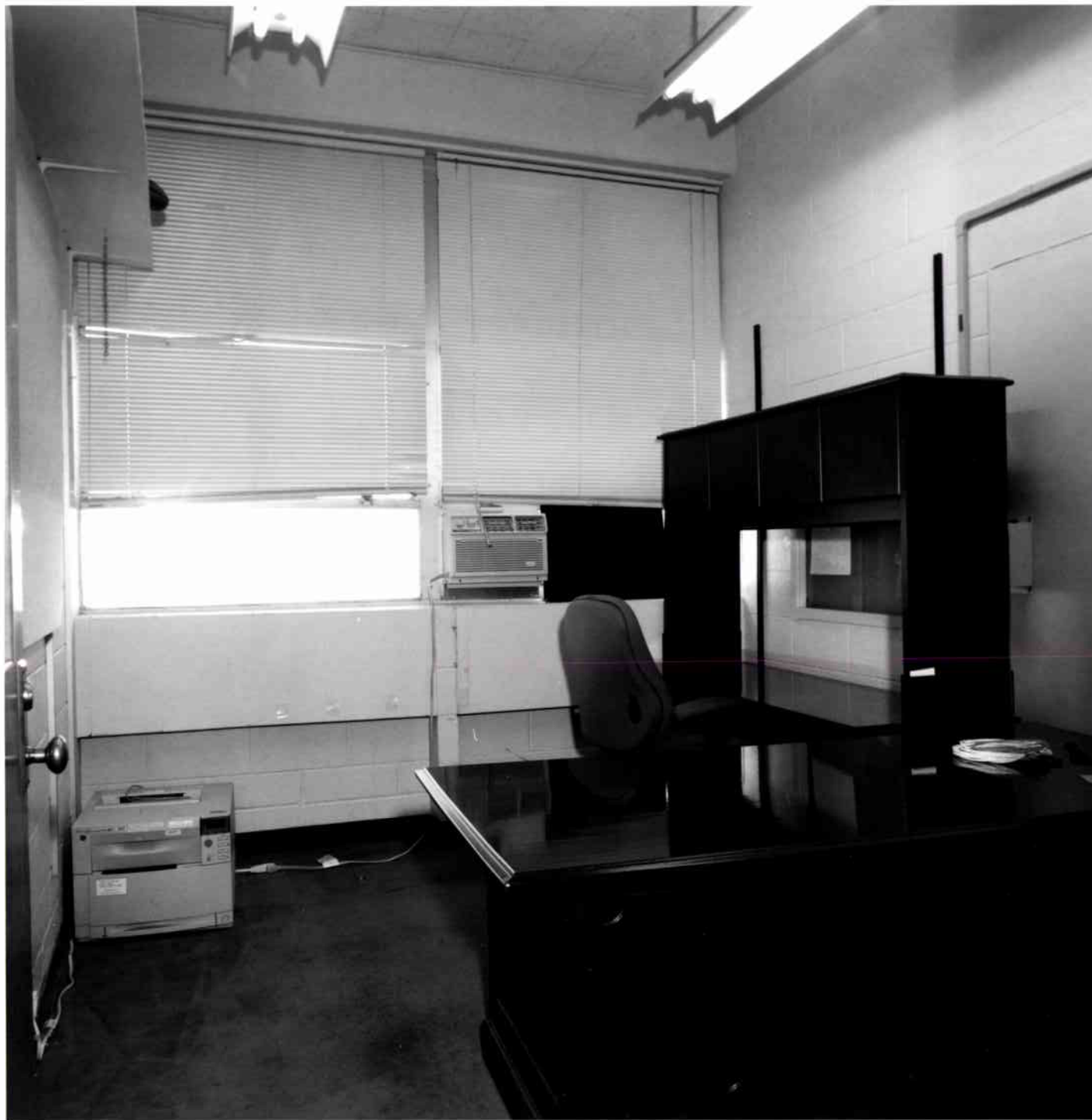
Yield 20 kt  
Diameter 54.25 in.  
Weight 5770 lbs  
Tested July 16, 1945

UNCLASSIFIED



























































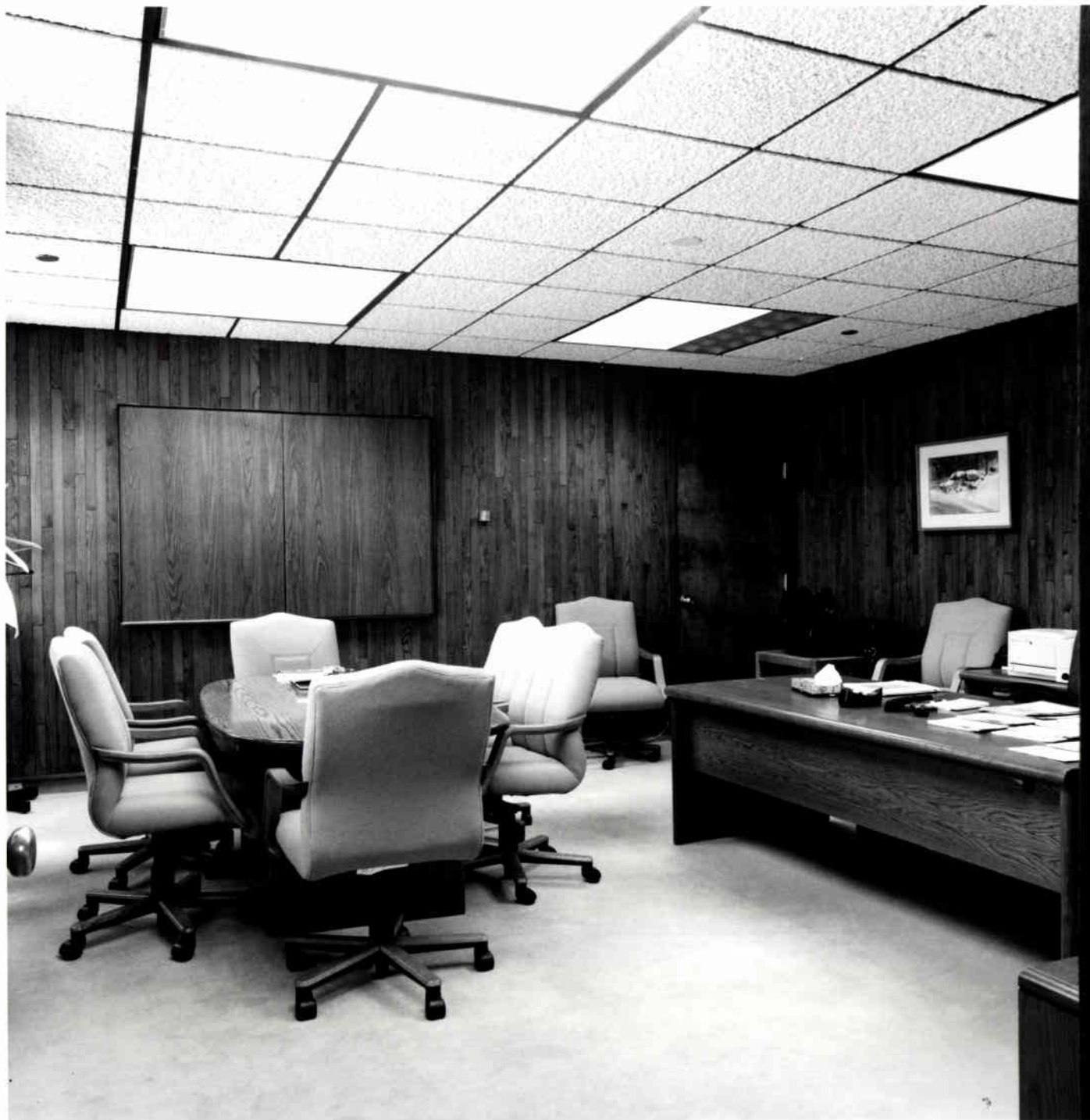


















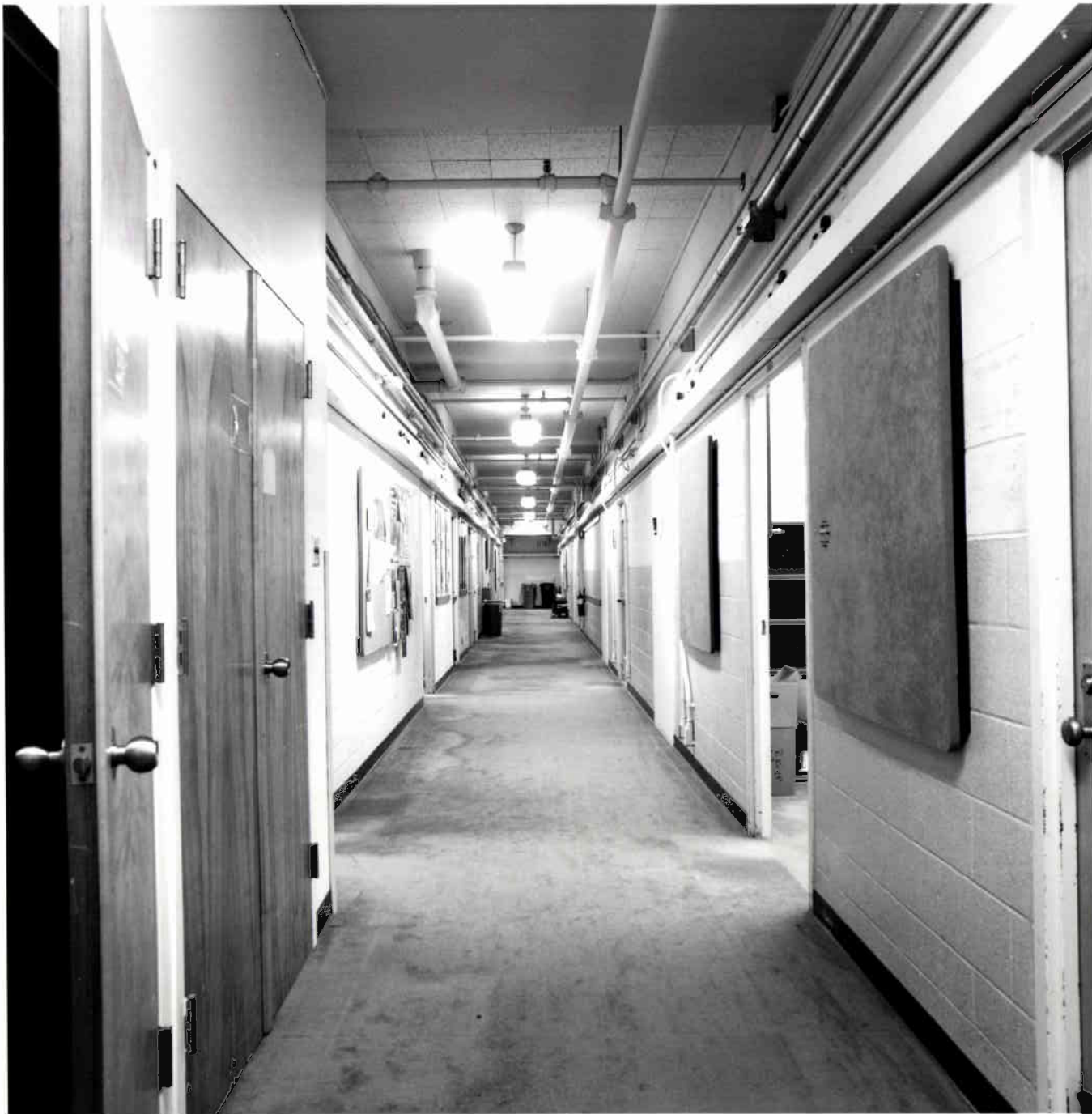
























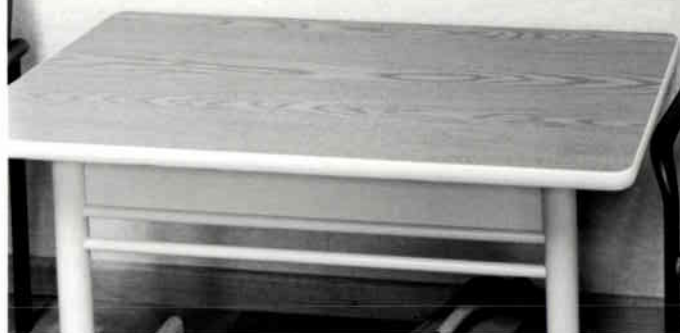














# New Threats New Initiatives

Dr. C. Browne  
Los Alamos National Laboratory  
1997-2003



Los Alamos

amos

Ideas That Change  
the World  
1945-2005 60











